



Datasheet for ABIN6255614  
**anti-MAPT antibody (pThr181)**



[Go to Product page](#)

5 Images

Overview

Quantity:	100 µL
Target:	MAPT
Binding Specificity:	pThr181
Reactivity:	Human, Rat, Mouse
Host:	Rabbit
Clonality:	Polyclonal
Conjugate:	This MAPT antibody is un-conjugated
Application:	Western Blotting (WB), ELISA, Immunohistochemistry (IHC)

Product Details

Immunogen:	A synthesized peptide derived from human Tau around the phosphorylation site of Thr181.
Isotype:	IgG
Specificity:	Phospho-Tau (Thr181) Antibody detects endogenous levels of Tau only when phosphorylated at Thr498, which site historically referenced as Thr181.
Predicted Reactivity:	Chicken
Purification:	The antibody is from purified rabbit serum by affinity purification via sequential chromatography on phospho- and non-phospho-peptide affinity columns.

Target Details

Target:	MAPT
---------	------

## Target Details

---

Alternative Name:	MAPT ( <a href="#">MAPT Products</a> )
Background:	<p>Description: Promotes microtubule assembly and stability, and might be involved in the establishment and maintenance of neuronal polarity. The C-terminus binds axonal microtubules while the N-terminus binds neural plasma membrane components, suggesting that tau functions as a linker protein between both. Axonal polarity is predetermined by TAU/MAPT localization (in the neuronal cell) in the domain of the cell body defined by the centrosome. The short isoforms allow plasticity of the cytoskeleton whereas the longer isoforms may preferentially play a role in its stabilization.</p> <p>Gene: MAPT</p>
Molecular Weight:	78 kDa
Gene ID:	4137
UniProt:	<a href="#">P10636</a>
Pathways:	<a href="#">MAPK Signaling</a> , <a href="#">Microtubule Dynamics</a> , <a href="#">M Phase</a> , <a href="#">Regulation of Cell Size</a>

## Application Details

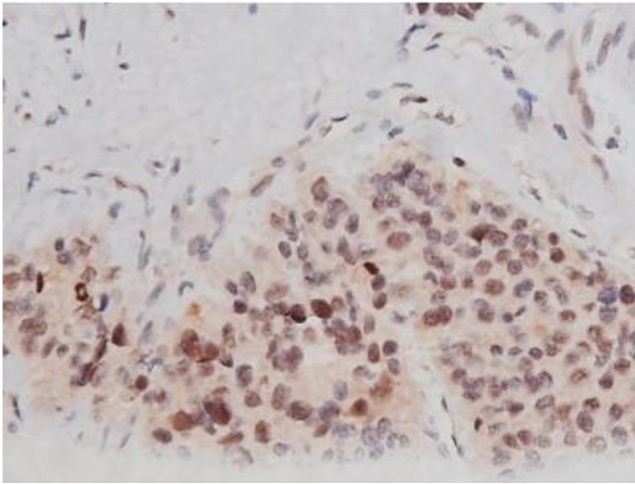
---

Application Notes:	WB 1:500-1:2000, IHC 1:50-1:200, ELISA(peptide) 1:20000-1:40000
Restrictions:	For Research Use only

## Handling

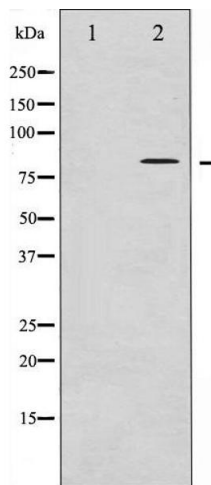
---

Format:	Liquid
Concentration:	1 mg/mL
Buffer:	Rabbit IgG in phosphate buffered saline , pH 7.4, 150 mM NaCl, 0.02 % sodium azide and 50 % glycerol.
Preservative:	Sodium azide
Precaution of Use:	This product contains Sodium azide: a POISONOUS AND HAZARDOUS SUBSTANCE which should be handled by trained staff only.
Storage:	-20 °C
Storage Comment:	Store at -20 °C. Stable for 12 months from date of receipt.
Expiry Date:	12 months



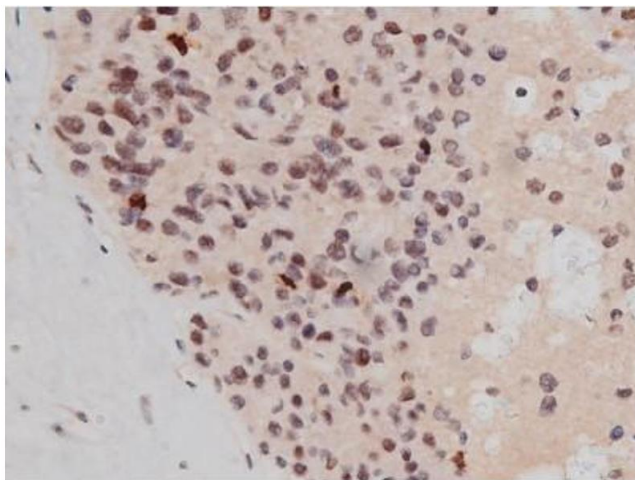
### Immunohistochemistry

**Image 1.** ABIN6267361 at 1/200 staining Human liver cancer tissue sections by IHC-P. The tissue was formaldehyde fixed and a heat mediated antigen retrieval step in citrate buffer was performed. The tissue was then blocked and incubated with the antibody for 1.5 hours at 22°C. An HRP conjugated goat anti-rabbit antibody was used as the secondary.



### Western Blotting

**Image 2.** Western blot analysis of Tau phosphorylation expression in Mouse brain tissue lysates, The lane on the left is treated with the antigen-specific peptide.



### Immunohistochemistry

**Image 3.** ABIN6267361 at 1/200 staining Human liver cancer tissue sections by IHC-P. The tissue was formaldehyde fixed and a heat mediated antigen retrieval step in citrate buffer was performed. The tissue was then blocked and incubated with the antibody for 1.5 hours at 22°C. An HRP conjugated goat anti-rabbit antibody was used as the secondary.

Please check the [product details page](#) for more images. Overall 5 images are available for ABIN6255614.