



[Go to Product page](#)

Datasheet for ABIN6255654

## anti-Cyclin D3 antibody (pThr283)

### 4 Images

#### Overview

Quantity:	100 µL
Target:	Cyclin D3 (CCND3)
Binding Specificity:	pThr283
Reactivity:	Human, Mouse, Rat
Host:	Rabbit
Clonality:	Polyclonal
Conjugate:	This Cyclin D3 antibody is un-conjugated
Application:	Western Blotting (WB), ELISA, Immunohistochemistry (IHC), Immunocytochemistry (ICC), Immunofluorescence (IF)

#### Product Details

Immunogen:	A synthesized peptide derived from human Cyclin D3 around the phosphorylation site of Thr283.
Isotype:	IgG
Specificity:	Phospho-Cyclin D3 (Thr283) Antibody detects endogenous levels of Cyclin D3 only when phosphorylated at Threonine 283.
Predicted Reactivity:	Pig,Bovine,Horse,Sheep,Rabbit,Dog,Chicken
Purification:	The antibody is from purified rabbit serum by affinity purification via sequential chromatography on phospho- and non-phospho-peptide affinity columns.

## Target Details

---

Target: Cyclin D3 (CCND3)

Alternative Name: CCND3 ([CCND3 Products](#))

Background: Description: Regulatory component of the cyclin D3-CDK4 (DC) complex that phosphorylates and inhibits members of the retinoblastoma (RB) protein family including RB1 and regulates the cell-cycle during G1/S transition. Phosphorylation of RB1 allows dissociation of the transcription factor E2F from the RB/E2F complex and the subsequent transcription of E2F target genes which are responsible for the progression through the G1 phase.

Hypophosphorylates RB1 in early G1 phase. Cyclin D-CDK4 complexes are major integrators of various mitogenic and antimitogenic signals. Also substrate for SMAD3, phosphorylating SMAD3 in a cell-cycle-dependent manner and repressing its transcriptional activity. Component of the ternary complex, cyclin D3/CDK4/CDKN1B, required for nuclear translocation and activity of the cyclin D-CDK4 complex.

Gene: CCND3

Molecular Weight: 31kDa

Gene ID: 896

UniProt: [P30281](#)

Pathways: [Cell Division Cycle](#), [Mitotic G1-G1/S Phases](#), [Glycosaminoglycan Metabolic Process](#)

## Application Details

---

Application Notes: WB 1:500-1:2000, IHC 1:50-1:200, IF/ICC 1:100-1:500, ELISA(peptide) 1:20000-1:40000

Restrictions: For Research Use only

## Handling

---

Format: Liquid

Concentration: 1 mg/mL

Buffer: Rabbit IgG in phosphate buffered saline , pH 7.4, 150 mM NaCl, 0.02 % sodium azide and 50 % glycerol.

Preservative: Sodium azide

Precaution of Use: This product contains Sodium azide: a POISONOUS AND HAZARDOUS SUBSTANCE which should be handled by trained staff only.

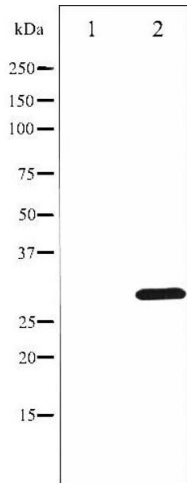
Storage: -20 °C

## Handling

Storage Comment: Store at -20 °C. Stable for 12 months from date of receipt.

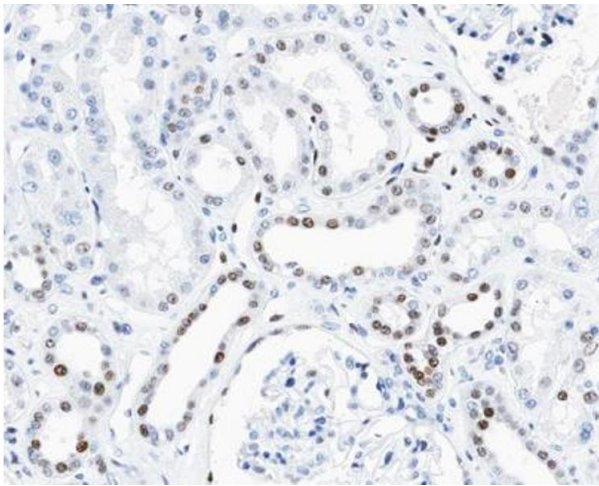
Expiry Date: 12 months

## Images



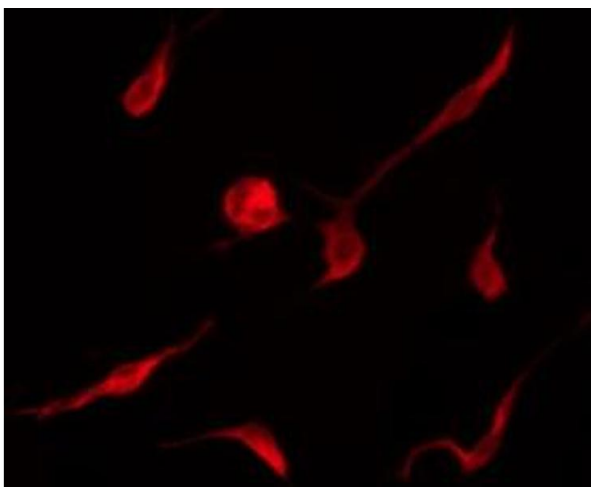
### Western Blotting

**Image 1.** Western blot analysis of Cyclin D3 phosphorylation expression in UV treated K562 whole cell lysates, The lane on the left is treated with the antigen-specific peptide.



### Immunohistochemistry

**Image 2.** ABIN6267462 at 1/100 staining human kidney tissue sections by IHC-P. The tissue was formaldehyde fixed and a heat mediated antigen retrieval step in citrate buffer was performed. The tissue was then blocked and incubated with the antibody for 1.5 hours at 22°C. An HRP conjugated goat anti-rabbit antibody was used as the secondary.



### Immunofluorescence (fixed cells)

**Image 3.** ABIN6267462 staining K562 by IF/ICC. The sample were fixed with PFA and permeabilized in 0.1% Triton X-100, then blocked in 10% serum for 45 minutes at 25°C. The primary antibody was diluted at 1/200 and incubated with the sample for 1 hour at 37°C. An Alexa Fluor 594 conjugated goat anti-rabbit IgG (H+L) Ab, diluted at 1/600, was used as the secondary antibody.

Please check the [product details page](#) for more images. Overall 4 images are available for ABIN6255654.