



[Go to Product page](#)

Datasheet for ABIN6255659

anti-CaMK2 alpha/beta/delta antibody (pThr305)

4 Images

Overview

Quantity:	100 µL
Target:	CaMK2 alpha/beta/delta
Binding Specificity:	pThr305
Reactivity:	Human, Mouse, Rat
Host:	Rabbit
Clonality:	Polyclonal
Conjugate:	This CaMK2 alpha/beta/delta antibody is un-conjugated
Application:	Immunohistochemistry (IHC), ELISA, Western Blotting (WB), Immunofluorescence (IF), Immunocytochemistry (ICC)

Product Details

Immunogen:	A synthesized peptide derived from human CaMK2 alpha/ beta/ delta around the phosphorylation site of Threonine 305
Isotype:	IgG
Specificity:	Phospho-CaMK2 alpha/ beta/ delta (Thr305) Antibody detects endogenous levels of CaMK2 alpha/ beta/ delta only when phosphorylated at Threonine 305
Cross-Reactivity:	Human, Mouse (Murine), Rat (Rattus)
Purification:	The antibody is from purified rabbit serum by affinity purification via sequential chromatography on phospho- and non-phospho-peptide affinity columns.

Target Details

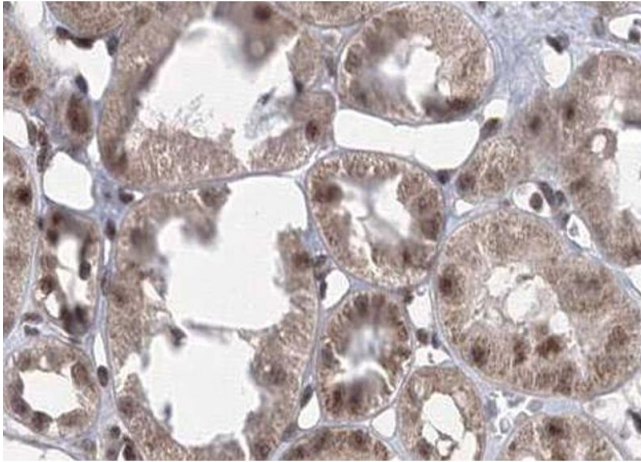
Target:	CaMK2 alpha/beta/delta
Alternative Name:	CaMK2 alpha/ beta/ delta (CaMK2 alpha/beta/delta Products)
Background:	<p>Description: CaM-kinase II (CAMK2) is a prominent kinase in the central nervous system that may function in long-term potentiation and neurotransmitter release. Member of the NMDAR signaling complex in excitatory synapses it may regulate NMDAR-dependent potentiation of the AMPAR and synaptic plasticity (By similarity). Phosphorylates transcription factor FOXO3 on 'Ser-298' (PubMed:23805378). Activates FOXO3 transcriptional activity (By similarity).</p> <p>Gene: CAMK2A</p>
Molecular Weight:	54kDa
Gene ID:	815
UniProt:	Q9UQM7 , Q13554 , Q13557

Application Details

Application Notes:	WB 1:500-1:2000 IHC 1:50-1:200, IF/ICC 1:100-1:500
Restrictions:	For Research Use only

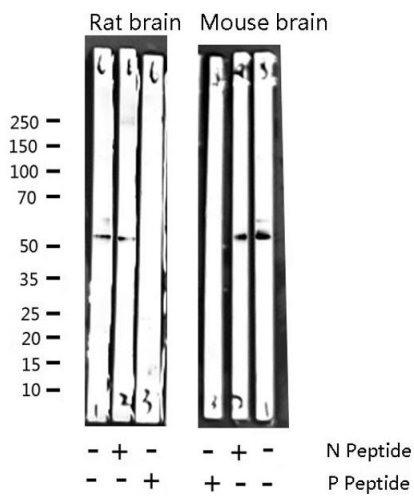
Handling

Format:	Liquid
Concentration:	1 mg/mL
Buffer:	Rabbit IgG in phosphate buffered saline , pH 7.4, 150 mM NaCl, 0.02 % sodium azide and 50 % glycerol.
Preservative:	Sodium azide
Precaution of Use:	This product contains Sodium azide: a POISONOUS AND HAZARDOUS SUBSTANCE which should be handled by trained staff only.
Storage:	-20 °C
Storage Comment:	Store at -20 °C.Stable for 12 months from date of receipt
Expiry Date:	12 months



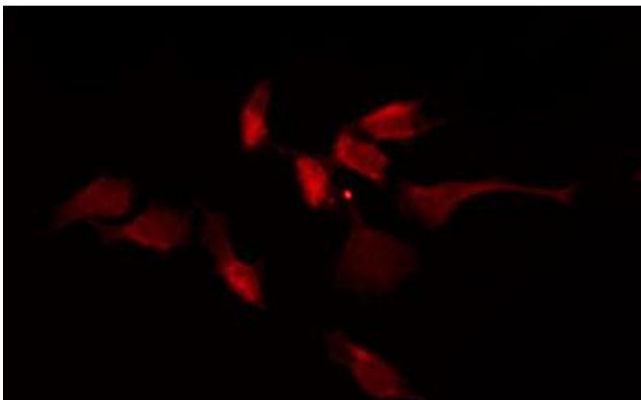
Immunohistochemistry

Image 1. ABIN6267701 at 1/100 staining human kidney carcinoma tissue sections by IHC-P. The tissue was formaldehyde fixed and a heat mediated antigen retrieval step in citrate buffer was performed. The tissue was then blocked and incubated with the antibody for 1.5 hours at 22°C. An HRP conjugated goat anti-rabbit antibody was used as the secondary.



Western Blotting

Image 2. Western blot analysis of Phospho-CaMK2 alpha/beta/delta (Thr305) expression in various lysates



Immunofluorescence (fixed cells)

Image 3. ABIN6267701 staining NIH-3T3 by IF/ICC. The sample were fixed with PFA and permeabilized in 0.1% Triton X-100, then blocked in 10% serum for 45 minutes at 25°C. The primary antibody was diluted at 1/200 and incubated with the sample for 1 hour at 37°C. An Alexa Fluor 594 conjugated goat anti-rabbit IgG (H+L) Ab, diluted at 1/600, was used as the secondary antibody.

Please check the [product details page](#) for more images. Overall 4 images are available for ABIN6255659.