

Datasheet for ABIN6255667
anti-MEF2A antibody (pThr319)

5 Images

[Go to Product page](#)

Overview

Quantity:	100 µL
Target:	MEF2A
Binding Specificity:	pThr319
Reactivity:	Human, Mouse, Rat
Host:	Rabbit
Clonality:	Polyclonal
Conjugate:	This MEF2A antibody is un-conjugated
Application:	Western Blotting (WB), Immunohistochemistry (IHC), ELISA, Immunofluorescence (IF), Immunocytochemistry (ICC)

Product Details

Immunogen:	A synthesized peptide derived from human MEF2A around the phosphorylation site of Thr319.
Isotype:	IgG
Specificity:	Phospho-MEF2A (Thr319) Antibody detects endogenous levels of MEF2A only when phosphorylated at Threonine 319.
Predicted Reactivity:	Pig,Bovine,Horse,Sheep,Rabbit,Dog,Chicken,Xenopus
Purification:	The antibody is from purified rabbit serum by affinity purification via sequential chromatography on phospho- and non-phospho-peptide affinity columns.

Target Details

Target:	MEF2A
---------	-------

Target Details

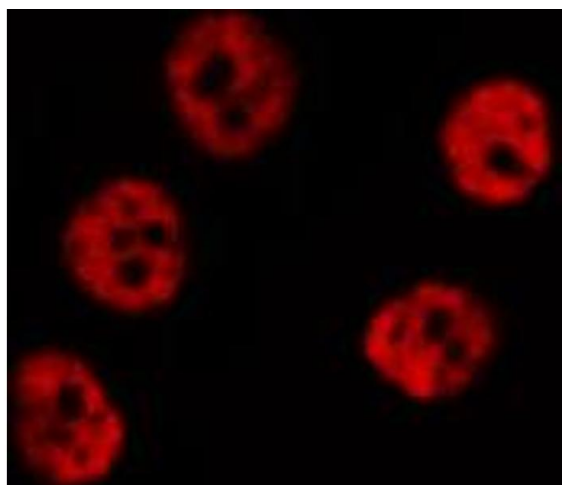
Alternative Name:	MEF2A (MEF2A Products)
Background:	<p>Description: Transcriptional activator which binds specifically to the MEF2 element, 5'-YTA[AT]4TAR-3', found in numerous muscle-specific genes. Also involved in the activation of numerous growth factor- and stress-induced genes. Mediates cellular functions not only in skeletal and cardiac muscle development, but also in neuronal differentiation and survival. Plays diverse roles in the control of cell growth, survival and apoptosis via p38 MAPK signaling in muscle-specific and/or growth factor-related transcription. In cerebellar granule neurons, phosphorylated and sumoylated MEF2A represses transcription of NUR77 promoting synaptic differentiation. Associates with chromatin to the ZNF16 promoter.</p> <p>Gene: MEF2A</p>
Molecular Weight:	54kDa
Gene ID:	4205
UniProt:	Q02078
Pathways:	Neurotrophin Signaling Pathway , Activation of Innate immune Response , Carbohydrate Homeostasis , Chromatin Binding , Regulation of Muscle Cell Differentiation , Toll-Like Receptors Cascades

Application Details

Application Notes:	WB 1:500-1:2000, IHC 1:50-1:200, IF/ICC 1:100-1:500, ELISA(peptide) 1:20000-1:40000
Restrictions:	For Research Use only

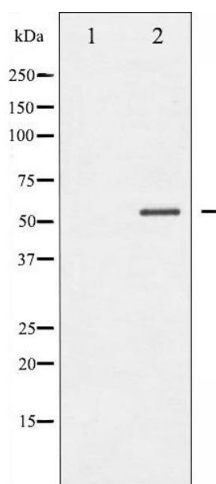
Handling

Format:	Liquid
Concentration:	1 mg/mL
Buffer:	Rabbit IgG in phosphate buffered saline , pH 7.4, 150 mM NaCl, 0.02 % sodium azide and 50 % glycerol.
Preservative:	Sodium azide
Precaution of Use:	This product contains Sodium azide: a POISONOUS AND HAZARDOUS SUBSTANCE which should be handled by trained staff only.
Storage:	-20 °C
Storage Comment:	Store at -20 °C. Stable for 12 months from date of receipt.



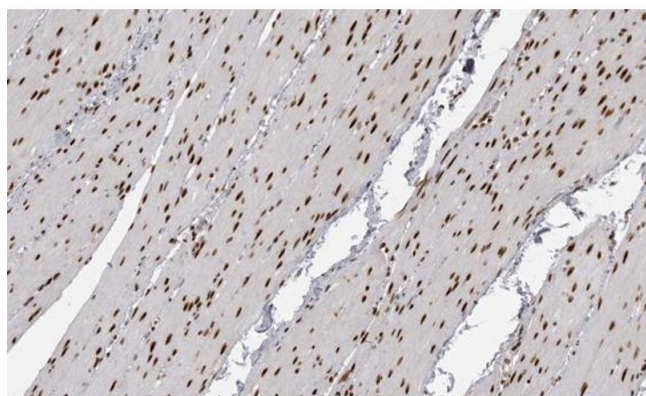
Immunofluorescence (fixed cells)

Image 1. ABIN6267591 staining HeLa by IF/ICC. The sample were fixed with PFA and permeabilized in 0.1% Triton X-100, then blocked in 10% serum for 45 minutes at 25°C. The primary antibody was diluted at 1/200 and incubated with the sample for 1 hour at 37°C. An Alexa Fluor 594 conjugated goat anti-rabbit IgG (H+L) Ab, diluted at 1/600, was used as the secondary antibody.



Western Blotting

Image 2. Western blot analysis of MEF2A phosphorylation expression in UV treated K562 whole cell lysates, The lane on the left is treated with the antigen-specific peptide.



Immunohistochemistry

Image 3. ABIN6267591 at 1/200 staining human Smooth muscle tissue sections by IHC-P. The tissue was formaldehyde fixed and a heat mediated antigen retrieval step in citrate buffer was performed. The tissue was then blocked and incubated with the antibody for 1.5 hours at 22°C. An HRP conjugated goat anti-rabbit antibody was used as the secondary.

Please check the [product details page](#) for more images. Overall 5 images are available for ABIN6255667.