

Datasheet for ABIN6255732
anti-ADAM17 antibody (pThr735)



[Go to Product page](#)

3 Images

Overview

Quantity:	100 µL
Target:	ADAM17
Binding Specificity:	pThr735
Reactivity:	Human, Rat, Mouse
Host:	Rabbit
Clonality:	Polyclonal
Conjugate:	This ADAM17 antibody is un-conjugated
Application:	Western Blotting (WB), ELISA, Immunohistochemistry (IHC), Immunocytochemistry (ICC), Immunofluorescence (IF)

Product Details

Immunogen:	A synthesized peptide derived from human ADAM 17 around the phosphorylation site of Thr735.
Isotype:	IgG
Specificity:	Phospho-ADAM 17 (Thr735) Antibody detects endogenous levels of ADAM 17 only when phosphorylated at Threonine 735.
Predicted Reactivity:	Bovine,Horse,Sheep,Dog
Purification:	The antibody is from purified rabbit serum by affinity purification via sequential chromatography on phospho- and non-phospho-peptide affinity columns.

Target Details

Target:	ADAM17
Alternative Name:	ADAM17 (ADAM17 Products)
Background:	<p>Description: Cleaves the membrane-bound precursor of TNF-alpha to its mature soluble form. Responsible for the proteolytical release of soluble JAM3 from endothelial cells surface. Responsible for the proteolytic release of several other cell-surface proteins, including p75 TNF-receptor, interleukin 1 receptor type II, p55 TNF-receptor, transforming growth factor-alpha, L-selectin, growth hormone receptor, MUC1 and the amyloid precursor protein. Acts as an activator of Notch pathway by mediating cleavage of Notch, generating the membrane-associated intermediate fragment called Notch extracellular truncation (NEXT). Plays a role in the proteolytic processing of ACE2.</p> <p>Gene: ADAM17</p>
Molecular Weight:	93kDa
Gene ID:	6868
UniProt:	P78536
Pathways:	Notch Signaling , EGFR Signaling Pathway , Neurotrophin Signaling Pathway , Response to Growth Hormone Stimulus

Application Details

Application Notes:	WB 1:500-1:2000, IF/ICC 1:100-1:500, IHC 1:50-1:200, ELISA(peptide) 1:20000-1:40000
Restrictions:	For Research Use only

Handling

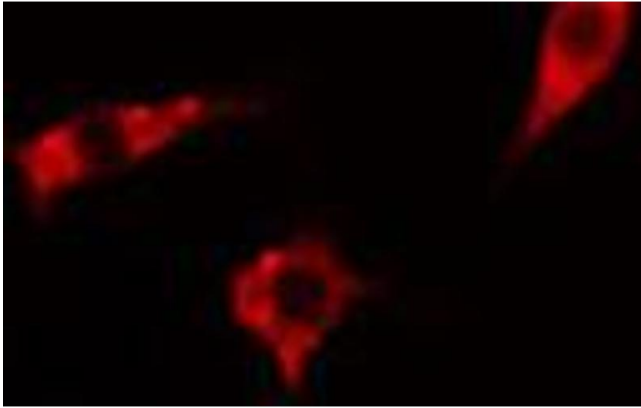
Format:	Liquid
Concentration:	1 mg/mL
Buffer:	Rabbit IgG in phosphate buffered saline , pH 7.4, 150 mM NaCl, 0.02 % sodium azide and 50 % glycerol.
Preservative:	Sodium azide
Precaution of Use:	This product contains Sodium azide: a POISONOUS AND HAZARDOUS SUBSTANCE which should be handled by trained staff only.
Storage:	-20 °C

Handling

Storage Comment: Store at -20 °C. Stable for 12 months from date of receipt.

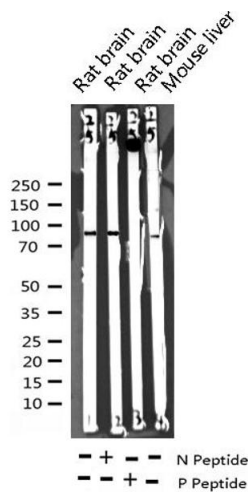
Expiry Date: 12 months

Images



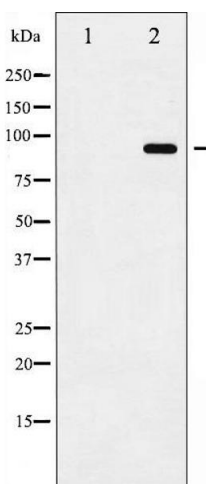
Immunofluorescence (fixed cells)

Image 1. ABIN6267570 staining HeLa cells by IF/ICC. The sample were fixed with PFA and permeabilized in 0.1% Triton X-100, then blocked in 10% serum for 45 minutes at 25°C. The primary antibody was diluted at 1/200 and incubated with the sample for 1 hour at 37°C. An Alexa Fluor 594 conjugated goat anti-rabbit IgG (H+L) antibody (Cat.# S0006), diluted at 1/600, was used as secondary antibody.



Western Blotting

Image 2. Western blot analysis of Phospho-ADAM 17 (Thr735) expression in various lysates



Western Blotting

Image 3. Western blot analysis of ADAM 17 phosphorylation expression in K562UV treated whole cell lysates, The lane on the left is treated with the antigen-specific peptide.