

Datasheet for ABIN6255749
anti-CASR antibody (pThr888)[Go to Product page](#)

4 Images

Overview

Quantity:	100 µL
Target:	CASR
Binding Specificity:	pThr888
Reactivity:	Human, Mouse, Rat
Host:	Rabbit
Clonality:	Polyclonal
Conjugate:	This CASR antibody is un-conjugated
Application:	Western Blotting (WB), ELISA, Immunofluorescence (IF), Immunocytochemistry (ICC)

Product Details

Immunogen:	A synthesized peptide derived from human Calcium Sensing Receptor around the phosphorylation site of Thr888.
Isotype:	IgG
Specificity:	Phospho-Calcium Sensing Receptor (Thr888) Antibody detects endogenous levels of Calcium Sensing Receptor only when phosphorylated at Threonine 888.
Predicted Reactivity:	Pig,Bovine,Horse,Sheep,Rabbit,Dog,Chicken
Purification:	The antibody is from purified rabbit serum by affinity purification via sequential chromatography on phospho- and non-phospho-peptide affinity columns.

Target Details

Target:	CASR
---------	------

Target Details

Alternative Name:	CASR (CASR Products)
Background:	<p>Description: G-protein-coupled receptor that senses changes in the extracellular concentration of calcium ions and plays a key role in maintaining calcium homeostasis (PubMed:7759551, PubMed:8702647, PubMed:8636323, PubMed:8878438, PubMed:17555508, PubMed:19789209, PubMed:21566075, PubMed:22114145, PubMed:23966241, PubMed:25292184, PubMed:25104082, PubMed:26386835, PubMed:25766501, PubMed:22789683). Senses fluctuations in the circulating calcium concentration and modulates the production of parathyroid hormone (PTH) in parathyroid glands (By similarity). The activity of this receptor is mediated by a G-protein that activates a phosphatidylinositol-calcium second messenger system (PubMed:7759551). The G-protein-coupled receptor activity is activated by a co-agonist mechanism: aromatic amino acids, such as Trp or Phe, act concertedly with divalent cations, such as calcium or magnesium, to achieve full receptor activation (PubMed:27434672, PubMed:27386547).</p> <p>Gene: CASR</p>
Molecular Weight:	140kDa
Gene ID:	846
UniProt:	P41180
Pathways:	Positive Regulation of Peptide Hormone Secretion , Carbohydrate Homeostasis

Application Details

Application Notes:	WB 1:500-1:2000, IF/ICC 1:100-1:500, ELISA(peptide) 1:20000-1:40000
Restrictions:	For Research Use only

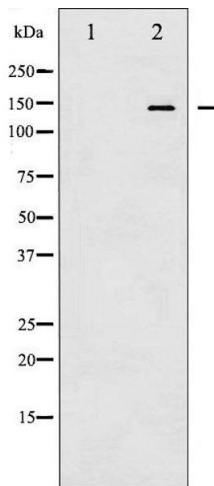
Handling

Format:	Liquid
Concentration:	1 mg/mL
Buffer:	Rabbit IgG in phosphate buffered saline , pH 7.4, 150 mM NaCl, 0.02 % sodium azide and 50 % glycerol.
Preservative:	Sodium azide
Precaution of Use:	This product contains Sodium azide: a POISONOUS AND HAZARDOUS SUBSTANCE which should be handled by trained staff only.

Handling

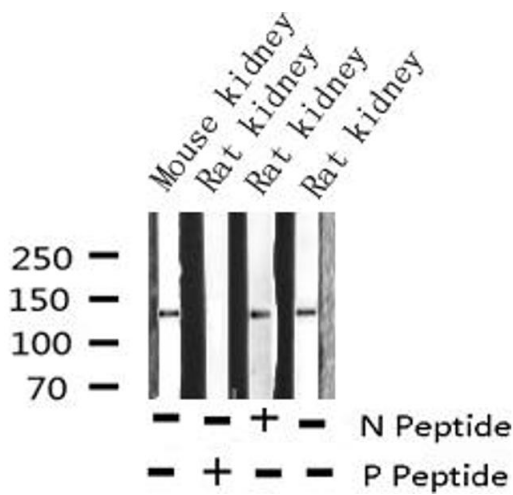
Storage:	-20 °C
Storage Comment:	Store at -20 °C. Stable for 12 months from date of receipt.
Expiry Date:	12 months

Images



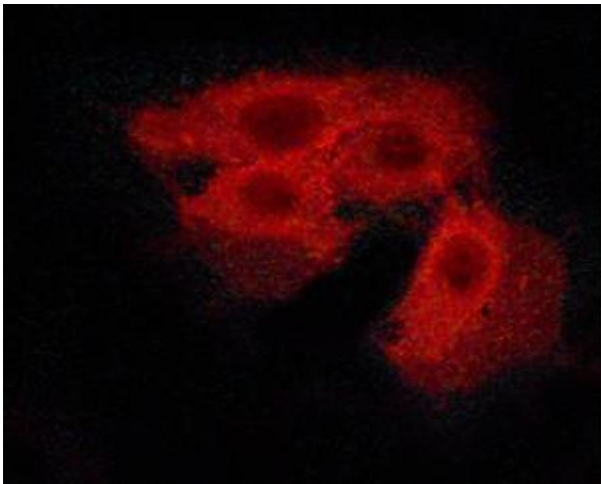
Western Blotting

Image 1. Western blot analysis of Calcium Sensing Receptor phosphorylation expression in LOVO whole cell lysates, The lane on the left is treated with the antigen-specific peptide.



Western Blotting

Image 2. Western blot analysis of Phospho-Calcium Sensing Receptor (Thr888) expression in various lysates



Immunofluorescence (fixed cells)

Image 3. ABIN6267505 staining HeLa cells by ICC/IF. Cells were fixed with PFA and permeabilized in 0.1% saponin prior to blocking in 10% serum for 45 minutes at 37°C. The primary antibody was diluted 1/400 and incubated with the sample for 1 hour at 37°C. A Alexa Fluor 594 conjugated goat polyclonal to rabbit IgG (H+L), diluted 1/600 was used as secondary antibody.

Images

Please check the [product details page](#) for more images. Overall 4 images are available for ABIN6255749.