

Datasheet for ABIN6255852
anti-CD28 antibody (pTyr218)



[Go to Product page](#)

2 Images

Overview

Quantity:	100 µL
Target:	CD28
Binding Specificity:	pTyr218
Reactivity:	Human, Mouse, Rat
Host:	Rabbit
Clonality:	Polyclonal
Conjugate:	This CD28 antibody is un-conjugated
Application:	Western Blotting (WB), Immunofluorescence (IF), ELISA, Immunocytochemistry (ICC)

Product Details

Immunogen:	A synthesized peptide derived from human CD28 around the phosphorylation site of Tyr218.
Isotype:	IgG
Specificity:	Phospho-CD28 (Tyr218) Antibody detects endogenous levels of CD28 only when phosphorylated at Tyr218.
Predicted Reactivity:	Pig,Bovine,Horse,Sheep,Rabbit,Dog
Purification:	The antibody is from purified rabbit serum by affinity purification via sequential chromatography on phospho- and non-phospho-peptide affinity columns.

Target Details

Target:	CD28
---------	------

Target Details

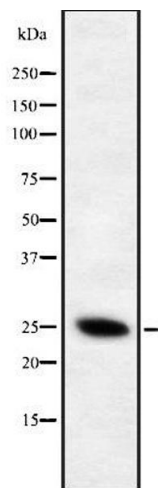
Alternative Name:	CD28 (CD28 Products)
Background:	<p>Description: Involved in T-cell activation, the induction of cell proliferation and cytokine production and promotion of T-cell survival. Enhances the production of IL4 and IL10 in T-cells in conjunction with TCR/CD3 ligation and CD40L costimulation (PubMed:8617933). Isoform 3 enhances CD40L-mediated activation of NF-kappa-B and kinases MAPK8 and PAK2 in T-cells (PubMed:15067037).</p> <p>Gene: CD28</p>
Molecular Weight:	25 kDa
Gene ID:	940
UniProt:	P10747
Pathways:	TCR Signaling , Fc-epsilon Receptor Signaling Pathway , EGFR Signaling Pathway , Regulation of Leukocyte Mediated Immunity , Positive Regulation of Immune Effector Process , Production of Molecular Mediator of Immune Response

Application Details

Application Notes:	WB 1:1000-3000, IF/ICC 1:100-1:500, ELISA(peptide) 1:20000-1:40000
Restrictions:	For Research Use only

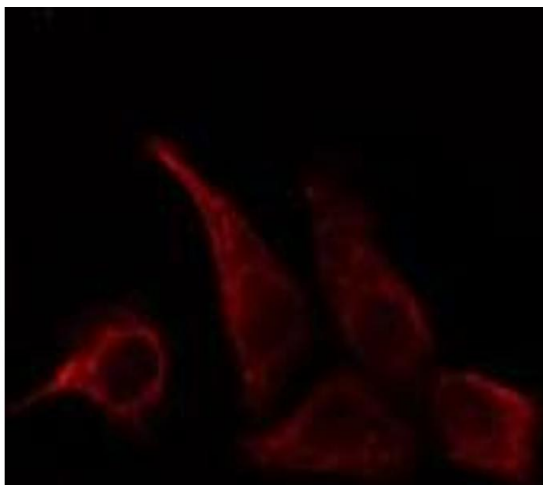
Handling

Format:	Liquid
Concentration:	1 mg/mL
Buffer:	Rabbit IgG in phosphate buffered saline , pH 7.4, 150 mM NaCl, 0.02 % sodium azide and 50 % glycerol.
Preservative:	Sodium azide
Precaution of Use:	This product contains Sodium azide: a POISONOUS AND HAZARDOUS SUBSTANCE which should be handled by trained staff only.
Storage:	-20 °C
Storage Comment:	Store at -20 °C. Stable for 12 months from date of receipt.
Expiry Date:	12 months



Western Blotting

Image 1. Western blot analysis of Phospho-CD28 (Tyr218) using Jurkat whole cell lysates



Immunofluorescence (fixed cells)

Image 2. ABIN6278649 staining HepG2 cells by IF/ICC. The sample were fixed with PFA and permeabilized in 0.1% Triton X-100, then blocked in 10% serum for 45 minutes at 25°C. The primary antibody was diluted at 1/200 and incubated with the sample for 1 hour at 37°C. An Alexa Fluor 594 conjugated goat anti-rabbit IgG (H+L) antibody (Cat.# S0006), diluted at 1/600, was used as secondary antibody