

Datasheet for ABIN6256017

**anti-Phospholipase C gamma 2 antibody (pTyr753)**[Go to Product page](#)

## 4 Images

## Overview

Quantity:	100 µL
Target:	Phospholipase C gamma 2 (PLCG2)
Binding Specificity:	pTyr753
Reactivity:	Human, Rat, Mouse
Host:	Rabbit
Clonality:	Polyclonal
Conjugate:	This Phospholipase C gamma 2 antibody is un-conjugated
Application:	Western Blotting (WB), Immunohistochemistry (IHC), ELISA, Immunofluorescence (IF), Immunocytochemistry (ICC)

## Product Details

Immunogen:	A synthesized peptide derived from human PLCG2 around the phosphorylation site of Tyr753.
Isotype:	IgG
Specificity:	Phospho-PLCG2 (Tyr753) Antibody detects endogenous levels of PLCG2 only when phosphorylated at Tyrosine 753.
Predicted Reactivity:	Pig,Bovine,Horse,Sheep,Rabbit,Dog,Chicken
Purification:	The antibody is from purified rabbit serum by affinity purification via sequential chromatography on phospho- and non-phospho-peptide affinity columns.

## Target Details

Target:	Phospholipase C gamma 2 (PLCG2)
---------	---------------------------------

## Target Details

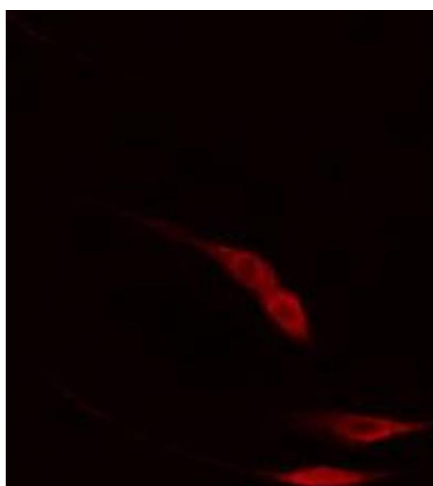
Alternative Name:	PLCG2 ( <a href="#">PLCG2 Products</a> )
Background:	<p>Description: The production of the second messenger molecules diacylglycerol (DAG) and inositol 1,4,5-trisphosphate (IP3) is mediated by activated phosphatidylinositol-specific phospholipase C enzymes. It is a crucial enzyme in transmembrane signaling.</p> <p>Gene: PLCG2</p>
Molecular Weight:	150kDa
Gene ID:	5336
UniProt:	<a href="#">P16885</a>
Pathways:	<a href="#">RTK Signaling</a> , <a href="#">WNT Signaling</a> , <a href="#">Fc-epsilon Receptor Signaling Pathway</a> , <a href="#">Inositol Metabolic Process</a> , <a href="#">Myometrial Relaxation and Contraction</a> , <a href="#">Toll-Like Receptors Cascades</a> , <a href="#">VEGF Signaling</a> , <a href="#">BCR Signaling</a>

## Application Details

Application Notes:	WB 1:500-1:2000, IHC 1:50-1:200, IF/ICC 1:100-1:500, ELISA(peptide) 1:20000-1:40000
Restrictions:	For Research Use only

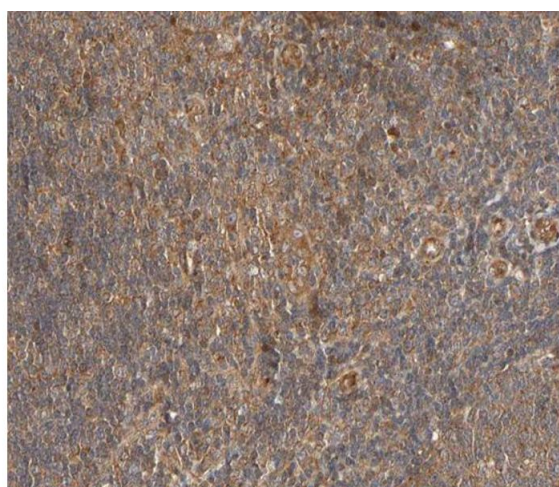
## Handling

Format:	Liquid
Concentration:	1 mg/mL
Buffer:	Rabbit IgG in phosphate buffered saline , pH 7.4, 150 mM NaCl, 0.02 % sodium azide and 50 % glycerol.
Preservative:	Sodium azide
Precaution of Use:	This product contains Sodium azide: a POISONOUS AND HAZARDOUS SUBSTANCE which should be handled by trained staff only.
Storage:	-20 °C
Storage Comment:	Store at -20 °C. Stable for 12 months from date of receipt.
Expiry Date:	12 months



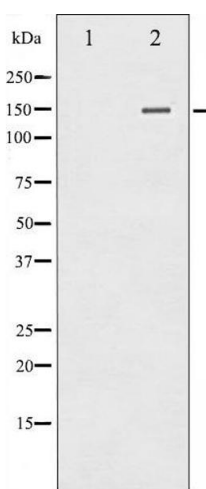
#### Immunofluorescence (fixed cells)

**Image 1.** ABIN6267403 staining HepG2 cells by IF/ICC. The sample were fixed with PFA and permeabilized in 0.1% Triton X-100, then blocked in 10% serum for 45 minutes at 25°C. The primary antibody was diluted at 1/200 and incubated with the sample for 1 hour at 37°C. An Alexa Fluor 594 conjugated goat anti-rabbit IgG (H+L) antibody (Cat.# S0006), diluted at 1/600, was used as secondary antibody.



#### Immunohistochemistry

**Image 2.** ABIN6267403 at 1/200 staining human lymph node tissue sections by IHC-P. The tissue was formaldehyde fixed and a heat mediated antigen retrieval step in citrate buffer was performed. The tissue was then blocked and incubated with the antibody for 1.5 hours at 22°C. An HRP conjugated goat anti-rabbit antibody was used as the secondary.



#### Western Blotting

**Image 3.** Western blot analysis of PLCG2 phosphorylation expression in HepG2 whole cell lysates. The lane on the left is treated with the antigen-specific peptide.

Please check the [product details page](#) for more images. Overall 4 images are available for ABIN6256017.