

Datasheet for ABIN6256126  
**anti-CDC37 antibody (pSer13)**[Go to Product page](#)

## 4 Images

## Overview

Quantity:	100 µL
Target:	CDC37
Binding Specificity:	pSer13
Reactivity:	Human, Mouse, Rat
Host:	Rabbit
Clonality:	Polyclonal
Conjugate:	This CDC37 antibody is un-conjugated
Application:	Western Blotting (WB), ELISA, Immunohistochemistry (IHC), Immunofluorescence (IF), Immunocytochemistry (ICC)

## Product Details

Immunogen:	A synthesized peptide derived from human CDC37 around the phosphorylation site of Ser13.
Isotype:	IgG
Specificity:	Phospho-CDC37 (Ser13) Antibody detects endogenous levels of CDC37 only when phosphorylated at Serine 13.
Predicted Reactivity:	Zebrafish,Bovine,Horse,Sheep,Rabbit,Dog,Chicken,Xenopus
Purification:	The antibody is from purified rabbit serum by affinity purification via sequential chromatography on phospho- and non-phospho-peptide affinity columns.

## Target Details

Target:	CDC37
---------	-------

## Target Details

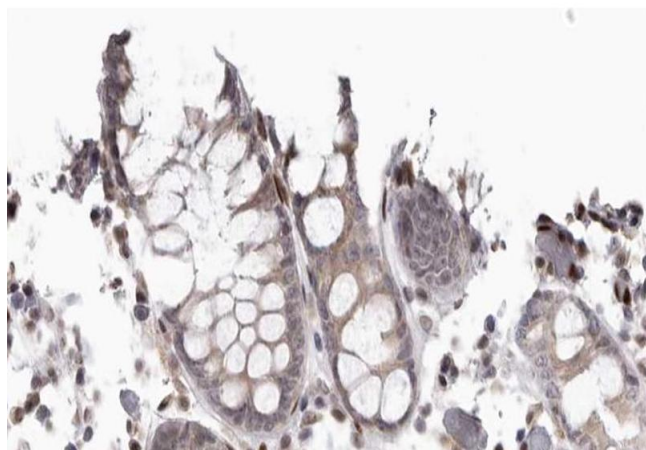
Alternative Name:	CDC37 ( <a href="#">CDC37 Products</a> )
Background:	Description: Co-chaperone that binds to numerous kinases and promotes their interaction with the Hsp90 complex, resulting in stabilization and promotion of their activity (PubMed:8666233). Inhibits HSP90AA1 ATPase activity (PubMed:23569206). Gene: CDC37
Molecular Weight:	44kDa
Gene ID:	11140
UniProt:	<a href="#">Q16543</a>

## Application Details

Application Notes:	WB 1:500-1:2000, IHC 1:50-1:200, IF/ICC 1:100-1:500, ELISA(peptide) 1:20000-1:40000
Restrictions:	For Research Use only

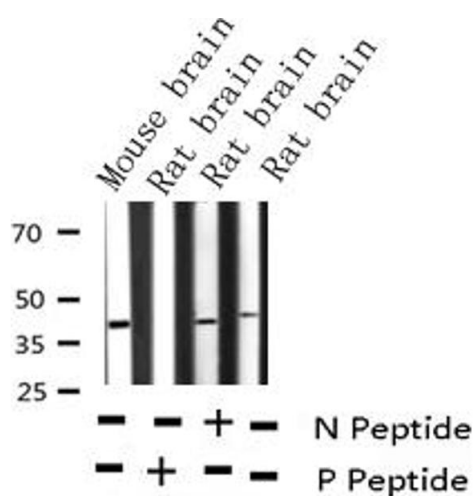
## Handling

Format:	Liquid
Concentration:	1 mg/mL
Buffer:	Rabbit IgG in phosphate buffered saline , pH 7.4, 150 mM NaCl, 0.02 % sodium azide and 50 % glycerol.
Preservative:	Sodium azide
Precaution of Use:	This product contains Sodium azide: a POISONOUS AND HAZARDOUS SUBSTANCE which should be handled by trained staff only.
Storage:	-20 °C
Storage Comment:	Store at -20 °C. Stable for 12 months from date of receipt.
Expiry Date:	12 months



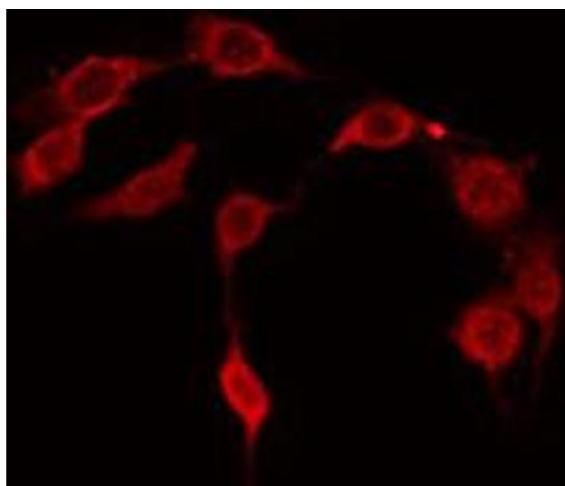
### Immunohistochemistry

**Image 1.** ABIN6267667 at 1/200 staining human colon cancer tissue sections by IHC-P. The tissue was formaldehyde fixed and a heat mediated antigen retrieval step in citrate buffer was performed. The tissue was then blocked and incubated with the antibody for 1.5 hours at 22°C. An HRP conjugated goat anti-rabbit antibody was used as the secondary.



### Western Blotting

**Image 2.** Western blot analysis of Phospho-CDC37 (Ser13) expression in various lysates



### Immunofluorescence (fixed cells)

**Image 3.** ABIN6267667 staining NIH-3T3 by IF/ICC. The sample were fixed with PFA and permeabilized in 0.1% Triton X-100, then blocked in 10% serum for 45 minutes at 25°C. The primary antibody was diluted at 1/200 and incubated with the sample for 1 hour at 37°C. An Alexa Fluor 594 conjugated goat anti-rabbit IgG (H+L) Ab, diluted at 1/600, was used as the secondary antibody.

Please check the [product details page](#) for more images. Overall 4 images are available for ABIN6256126.