

Datasheet for ABIN6256140
anti-STX1A antibody (pSer14)[Go to Product page](#)

3 Images

Overview

Quantity:	100 µL
Target:	STX1A
Binding Specificity:	pSer14
Reactivity:	Human, Mouse, Rat
Host:	Rabbit
Clonality:	Polyclonal
Conjugate:	This STX1A antibody is un-conjugated
Application:	Western Blotting (WB), ELISA, Immunofluorescence (IF), Immunocytochemistry (ICC)

Product Details

Immunogen:	A synthesized peptide derived from human Syntaxin 1A around the phosphorylation site of Ser14.
Isotype:	IgG
Specificity:	Phospho-Syntaxin 1A (Ser14) Antibody detects endogenous levels of Syntaxin 1A only when phosphorylated at Serine 14.
Predicted Reactivity:	Bovine, Sheep
Purification:	The antibody is from purified rabbit serum by affinity purification via sequential chromatography on phospho- and non-phospho-peptide affinity columns.

Target Details

Target:	STX1A
---------	-------

Target Details

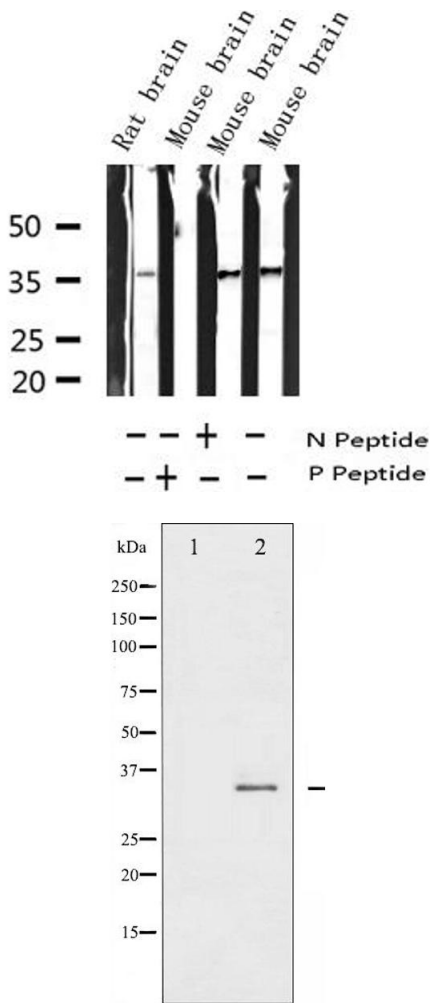
Alternative Name:	STX1A (STX1A Products)
Background:	Description: Plays a role in hormone and neurotransmitter exocytosis (By similarity). Potentially involved in docking of synaptic vesicles at presynaptic active zones. May mediate Ca ²⁺ -regulation of exocytosis acrosomal reaction in sperm. Gene: STX1A
Molecular Weight:	35kDa
Gene ID:	6804
UniProt:	Q16623
Pathways:	Peptide Hormone Metabolism , Synaptic Membrane , Synaptic Vesicle Exocytosis , Dicarboxylic Acid Transport

Application Details

Application Notes:	WB 1:500-1:2000, IF/ICC 1:100-1:500, ELISA(peptide) 1:20000-1:40000
Restrictions:	For Research Use only

Handling

Format:	Liquid
Concentration:	1 mg/mL
Buffer:	Rabbit IgG in phosphate buffered saline , pH 7.4, 150 mM NaCl, 0.02 % sodium azide and 50 % glycerol.
Preservative:	Sodium azide
Precaution of Use:	This product contains Sodium azide: a POISONOUS AND HAZARDOUS SUBSTANCE which should be handled by trained staff only.
Storage:	-20 °C
Storage Comment:	Store at -20 °C. Stable for 12 months from date of receipt.
Expiry Date:	12 months

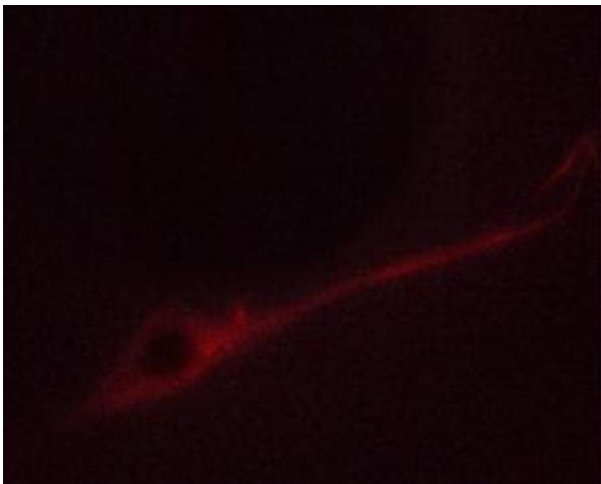


Western Blotting

Image 1. Western blot analysis of Phospho-Syntaxin 1A (Ser14) expression in various lysates

Western Blotting

Image 2. Western blot analysis of Syntaxin 1A phosphorylation expression in Mouse brain tissue lysates. The lane on the left is treated with the antigen-specific peptide.



Immunofluorescence (fixed cells)

Image 3. ABIN6267672 staining NIH/3T3 cells by ICC/IF. Cells were fixed with PFA and permeabilized in 0.1% saponin prior to blocking in 10% serum for 45 minutes at 37°C. The primary antibody was diluted 1/400 and incubated with the sample for 1 hour at 37°C. A Alexa Fluor 594 conjugated goat polyclonal to rabbit IgG (H+L), diluted 1/600 was used as secondary antibody.