



[Go to Product page](#)

Datasheet for ABIN6256146

anti-Cyclin B1 antibody (pSer147)

3 Images

Overview

Quantity:	100 µL
Target:	Cyclin B1 (CCNB1)
Binding Specificity:	pSer147
Reactivity:	Human, Mouse, Rat
Host:	Rabbit
Clonality:	Polyclonal
Conjugate:	This Cyclin B1 antibody is un-conjugated
Application:	Western Blotting (WB), Immunohistochemistry (IHC), Immunofluorescence (IF), ELISA, Immunocytochemistry (ICC)

Product Details

Immunogen:	A synthesized peptide derived from human Cyclin B1 around the phosphorylation site of Ser147.
Isotype:	IgG
Specificity:	Phospho-Cyclin B1 (Ser147) Antibody detects endogenous levels of Cyclin B1 only when phosphorylated at Serine 147.
Predicted Reactivity:	Zebrafish,Bovine,Horse,Sheep,Rabbit,Dog
Purification:	The antibody is from purified rabbit serum by affinity purification via sequential chromatography on phospho- and non-phospho-peptide affinity columns.

Target Details

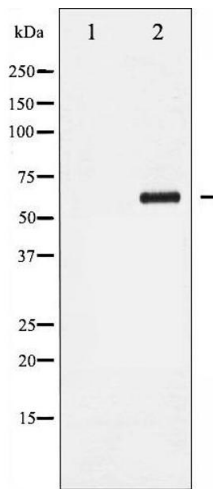
Target:	Cyclin B1 (CCNB1)
Alternative Name:	CCNB1 (CCNB1 Products)
Background:	Description: Essential for the control of the cell cycle at the G2/M (mitosis) transition. Gene: CCNB1
Molecular Weight:	60kDa
Gene ID:	891
UniProt:	P14635
Pathways:	Cell Division Cycle , AMPK Signaling , Mitotic G1-G1/S Phases , M Phase

Application Details

Application Notes:	WB 1:500-1:2000, IHC 1:50-1:200, IF/ICC 1:100-1:500, ELISA(peptide) 1:20000-1:40000
Restrictions:	For Research Use only

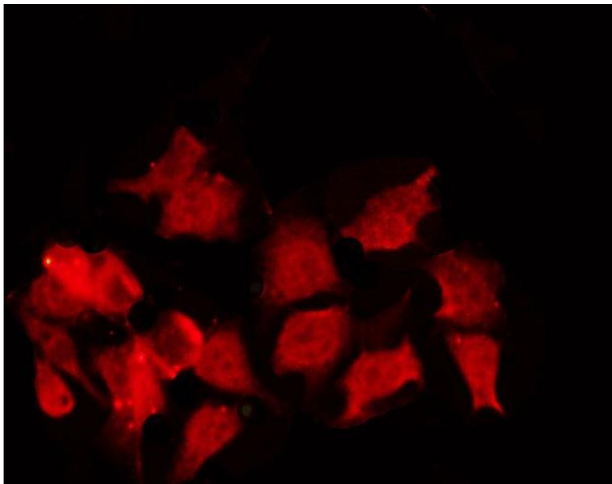
Handling

Format:	Liquid
Concentration:	1 mg/mL
Buffer:	Rabbit IgG in phosphate buffered saline , pH 7.4, 150 mM NaCl, 0.02 % sodium azide and 50 % glycerol.
Preservative:	Sodium azide
Precaution of Use:	This product contains Sodium azide: a POISONOUS AND HAZARDOUS SUBSTANCE which should be handled by trained staff only.
Storage:	-20 °C
Storage Comment:	Store at -20 °C. Stable for 12 months from date of receipt.
Expiry Date:	12 months



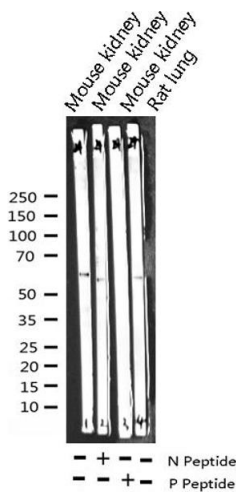
Western Blotting

Image 1. Western blot analysis of Cyclin B1 phosphorylation expression in UV treated Jurkat whole cell lysates, The lane on the left is treated with the antigen-specific peptide.



Immunofluorescence (fixed cells)

Image 2. ABIN6267380 staining NIH-3T3 by IF/ICC. The sample were fixed with PFA and permeabilized in 0.1% Triton X-100, then blocked in 10% serum for 45 minutes at 25°C. The primary antibody was diluted at 1/200 and incubated with the sample for 1 hour at 37°C. An Alexa Fluor 594 conjugated goat anti-rabbit IgG (H+L) Ab, diluted at 1/600, was used as the secondary antibody.



Western Blotting

Image 3. Western blot analysis of Phospho-Cyclin B1 (Ser147) expression in various lysates