

Datasheet for ABIN6256152  
**anti-Stathmin 1 antibody (pSer15)**

## 4 Images

[Go to Product page](#)

## Overview

Quantity:	100 µL
Target:	Stathmin 1 (STMN1)
Binding Specificity:	pSer15
Reactivity:	Human, Mouse, Rat
Host:	Rabbit
Clonality:	Polyclonal
Conjugate:	This Stathmin 1 antibody is un-conjugated
Application:	Western Blotting (WB), Immunohistochemistry (IHC), ELISA, Immunofluorescence (IF), Immunocytochemistry (ICC)

## Product Details

Immunogen:	A synthesized peptide derived from human Stathmin 1 around the phosphorylation site of Serine 15
Isotype:	IgG
Specificity:	Phospho-Stathmin 1 (Ser15) Antibody detects endogenous levels of Stathmin 1 only when phosphorylated at Serine 15
Cross-Reactivity:	Human, Mouse (Murine), Rat (Rattus)
Purification:	The antibody is from purified rabbit serum by affinity purification via sequential chromatography on phospho- and non-phospho-peptide affinity columns.

## Target Details

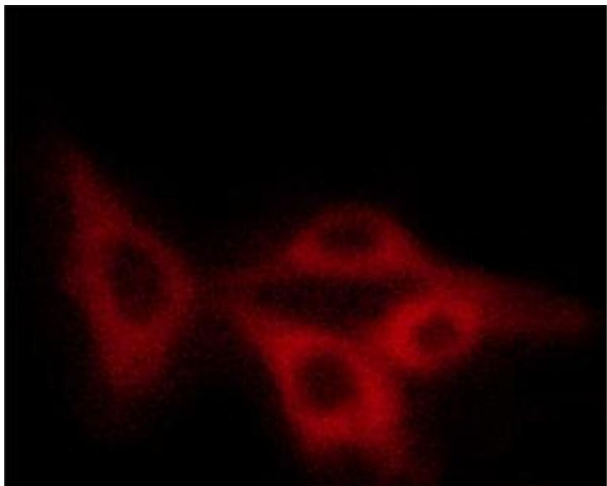
Target:	Stathmin 1 (STMN1)
Alternative Name:	Stathmin 1 ( <a href="#">STMN1 Products</a> )
Background:	<p>Description: Involved in the regulation of the microtubule (MT) filament system by destabilizing microtubules. Prevents assembly and promotes disassembly of microtubules. Phosphorylation at Ser-16 may be required for axon formation during neurogenesis. Involved in the control of the learned and innate fear (By similarity).</p> <p>Gene: STMN1</p>
Molecular Weight:	19kDa
Gene ID:	3925
UniProt:	<a href="#">P16949</a>
Pathways:	<a href="#">MAPK Signaling</a> , <a href="#">Microtubule Dynamics</a>

## Application Details

Application Notes:	WB 1:500-1:2000 IHC 1:50-1:200 IF/ICC 1:100-1:500
Restrictions:	For Research Use only

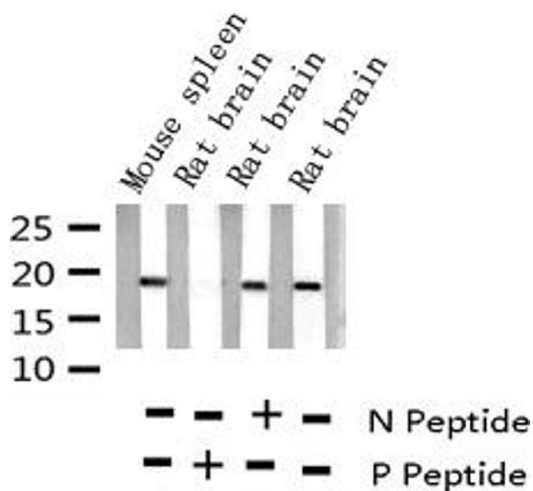
## Handling

Format:	Liquid
Concentration:	1 mg/mL
Buffer:	Rabbit IgG in phosphate buffered saline , pH 7.4, 150 mM NaCl, 0.02 % sodium azide and 50 % glycerol.
Preservative:	Sodium azide
Precaution of Use:	This product contains Sodium azide: a POISONOUS AND HAZARDOUS SUBSTANCE which should be handled by trained staff only.
Storage:	-20 °C
Storage Comment:	Store at -20 °C.Stable for 12 months from date of receipt
Expiry Date:	12 months



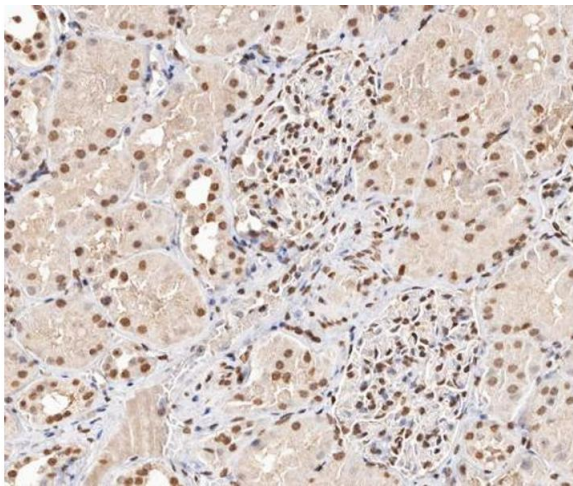
#### Immunofluorescence (fixed cells)

**Image 1.** ABIN6267404 staining COS7 cells by ICC/IF. Cells were fixed with PFA and permeabilized in 0.1% saponin prior to blocking in 10% serum for 45 minutes at 37°C. The primary antibody was diluted 1/400 and incubated with the sample for 1 hour at 37°C. A Alexa Fluor® 594 conjugated goat polyclonal to rabbit IgG (H+L), diluted 1/600 was used as secondary antibody.



#### Western Blotting

**Image 2.** Western blot analysis of Phospho-Stathmin 1 (Ser15) expression in various lysates



#### Immunohistochemistry

**Image 3.** ABIN6267404 at 1/200 staining human kidney tissue sections by IHC-P. The tissue was formaldehyde fixed and a heat mediated antigen retrieval step in citrate buffer was performed. The tissue was then blocked and incubated with the antibody for 1.5 hours at 22°C. An HRP conjugated goat anti-rabbit antibody was used as the secondary.

Please check the [product details page](#) for more images. Overall 4 images are available for ABIN6256152.