

Datasheet for ABIN6256155
anti-BAD antibody (pSer155)[Go to Product page](#)

4 Images

Overview

Quantity:	100 µL
Target:	BAD
Binding Specificity:	pSer155
Reactivity:	Human, Mouse, Rat
Host:	Rabbit
Clonality:	Polyclonal
Conjugate:	This BAD antibody is un-conjugated
Application:	ELISA, Western Blotting (WB), Immunohistochemistry (IHC), Immunofluorescence (IF), Immunocytochemistry (ICC)

Product Details

Immunogen:	A synthesized peptide derived from human BAD around the phosphorylation site of Ser155.
Isotype:	IgG
Specificity:	Phospho-BAD (Ser155) Antibody detects endogenous levels of BAD only when phosphorylated at Ser118, which site historically referenced as Ser155.
Predicted Reactivity:	Bovine,Horse,Sheep,Dog
Purification:	The antibody is from purified rabbit serum by affinity purification via sequential chromatography on phospho- and non-phospho-peptide affinity columns.

Target Details

Target:	BAD
---------	-----

Target Details

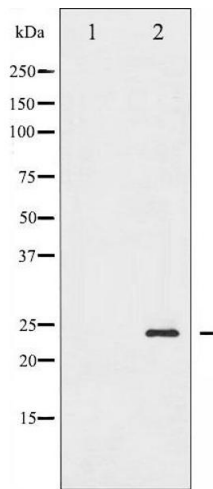
Alternative Name:	BAD (BAD Products)
Background:	<p>Description: Promotes cell death. Successfully competes for the binding to Bcl-X(L), Bcl-2 and Bcl-W, thereby affecting the level of heterodimerization of these proteins with BAX. Can reverse the death repressor activity of Bcl-X(L), but not that of Bcl-2 (By similarity). Appears to act as a link between growth factor receptor signaling and the apoptotic pathways.</p> <p>Gene: BAD</p>
Molecular Weight:	23kDa
Gene ID:	572
UniProt:	Q92934
Pathways:	MAPK Signaling , PI3K-Akt Signaling , RTK Signaling , Apoptosis , Fc-epsilon Receptor Signaling Pathway , Positive Regulation of Peptide Hormone Secretion , Carbohydrate Homeostasis , Positive Regulation of Endopeptidase Activity , Regulation of Carbohydrate Metabolic Process , Hepatitis C , CXCR4-mediated Signaling Events

Application Details

Application Notes:	WB 1:500-1:2000, IHC 1:50-1:200, IF/ICC 1:100-1:500, ELISA(peptide) 1:20000-1:40000
Restrictions:	For Research Use only

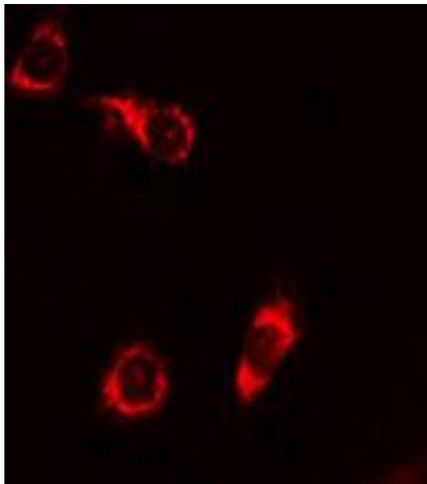
Handling

Format:	Liquid
Concentration:	1 mg/mL
Buffer:	Rabbit IgG in phosphate buffered saline , pH 7.4, 150 mM NaCl, 0.02 % sodium azide and 50 % glycerol.
Preservative:	Sodium azide
Precaution of Use:	This product contains Sodium azide: a POISONOUS AND HAZARDOUS SUBSTANCE which should be handled by trained staff only.
Storage:	-20 °C
Storage Comment:	Store at -20 °C. Stable for 12 months from date of receipt.
Expiry Date:	12 months



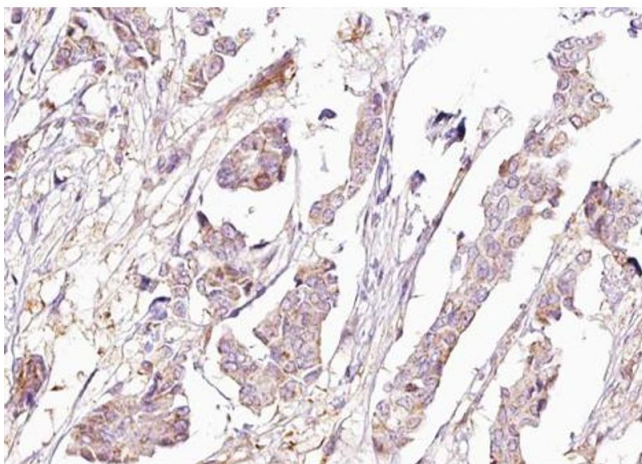
Western Blotting

Image 1. Western blot analysis of BAD phosphorylation expression in Forskolin treated 293 whole cell lysates, The lane on the left is treated with the antigen-specific peptide.



Immunofluorescence (fixed cells)

Image 2. ABIN6267680 staining 293 cells by IF/ICC. The sample were fixed with PFA and permeabilized in 0.1% Triton X-100, then blocked in 10% serum for 45 minutes at 25°C. The primary antibody was diluted at 1/200 and incubated with the sample for 1 hour at 37°C. An Alexa Fluor 594 conjugated goat anti-rabbit IgG (H+L) antibody (Cat.# S0006), diluted at 1/600, was used as secondary antibody.



Immunohistochemistry

Image 3. ABIN6267680 at 1/100 staining human Breast carcinoma tissue sections by IHC-P. The tissue was formaldehyde fixed and a heat mediated antigen retrieval step in citrate buffer was performed. The tissue was then blocked and incubated with the antibody for 1.5 hours at 22°C. An HRP conjugated goat anti-rabbit antibody was used as the secondary.

Please check the [product details page](#) for more images. Overall 4 images are available for ABIN6256155.