

Datasheet for ABIN6256165
anti-NFATC3 antibody (pSer165)[Go to Product page](#)

4 Images

Overview

| | |
|----------------------|----------------------------------------------------------------------------------|
| Quantity: | 100 µL |
| Target: | NFATC3 |
| Binding Specificity: | pSer165 |
| Reactivity: | Human, Mouse, Rat |
| Host: | Rabbit |
| Clonality: | Polyclonal |
| Conjugate: | This NFATC3 antibody is un-conjugated |
| Application: | Western Blotting (WB), ELISA, Immunofluorescence (IF), Immunocytochemistry (ICC) |

Product Details

| | |
|-----------------------|---------------------------------------------------------------------------------------------------------------------------------------------------------|
| Immunogen: | A synthesized peptide derived from human NFAT4 around the phosphorylation site of Ser165. |
| Isotype: | IgG |
| Specificity: | Phospho-NFAT4 (Ser165) Antibody detects endogenous levels of NFAT4 only when phosphorylated at Serine 165. |
| Predicted Reactivity: | Pig,Bovine,Horse,Sheep,Rabbit,Dog |
| Purification: | The antibody is from purified rabbit serum by affinity purification via sequential chromatography on phospho- and non-phospho-peptide affinity columns. |

Target Details

| | |
|---------|--------|
| Target: | NFATC3 |
|---------|--------|

Target Details

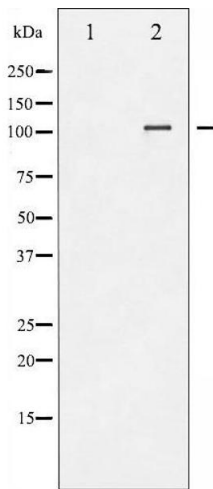
| | |
|-------------------|-------------------------------------------------------------------------------------------------------------------------------------------------------------------------------------------------|
| Alternative Name: | NFATC3 (NFATC3 Products) |
| Background: | Description: Acts as a regulator of transcriptional activation. Plays a role in the inducible expression of cytokine genes in T-cells, especially in the induction of the IL-2. Gene: NFATC3 |
| Molecular Weight: | 115kDa |
| Gene ID: | 4775 |
| UniProt: | Q12968 |
| Pathways: | RTK Signaling , WNT Signaling , Fc-epsilon Receptor Signaling Pathway , Chromatin Binding |

Application Details

| | |
|--------------------|---------------------------------------------------------------------|
| Application Notes: | WB 1:500-1:2000, IF/ICC 1:100-1:500, ELISA(peptide) 1:20000-1:40000 |
| Restrictions: | For Research Use only |

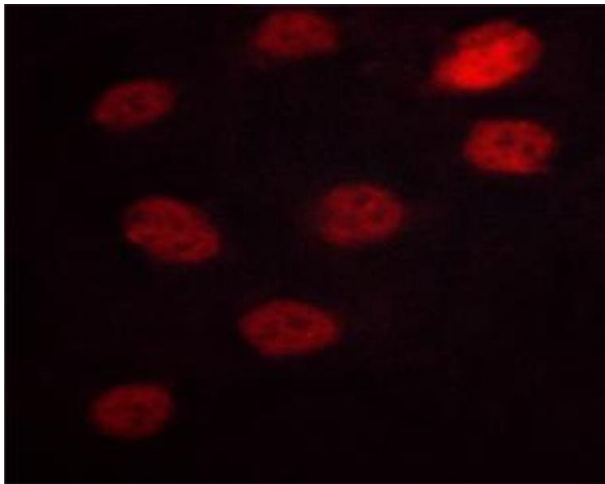
Handling

| | |
|--------------------|------------------------------------------------------------------------------------------------------------------------|
| Format: | Liquid |
| Concentration: | 1 mg/mL |
| Buffer: | Rabbit IgG in phosphate buffered saline , pH 7.4, 150 mM NaCl, 0.02 % sodium azide and 50 % glycerol. |
| Preservative: | Sodium azide |
| Precaution of Use: | This product contains Sodium azide: a POISONOUS AND HAZARDOUS SUBSTANCE which should be handled by trained staff only. |
| Storage: | -20 °C |
| Storage Comment: | Store at -20 °C. Stable for 12 months from date of receipt. |
| Expiry Date: | 12 months |



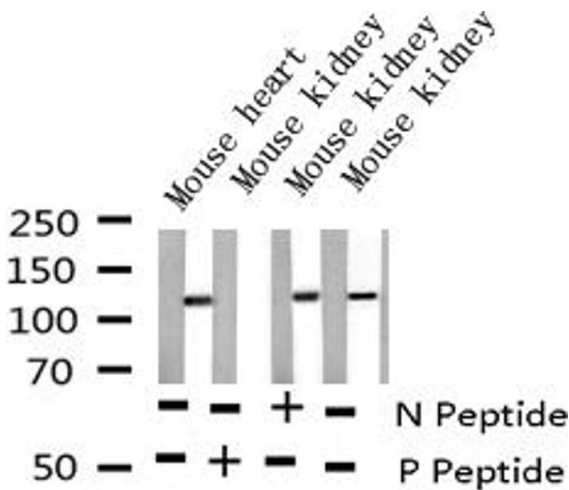
Western Blotting

Image 1. Western blot analysis of NFAT4 phosphorylation expression in HeLa whole cell lysates, The lane on the left is treated with the antigen-specific peptide.



Immunofluorescence (fixed cells)

Image 2. ABIN6267629 staining HeLa cells by ICC/IF. Cells were fixed with PFA and permeabilized in 0.1% saponin prior to blocking in 10% serum for 45 minutes at 37°C. The primary antibody was diluted 1/400 and incubated with the sample for 1 hour at 37°C. A Alexa Fluor 594 conjugated goat polyclonal to rabbit IgG (H+L), diluted 1/600 was used as secondary antibody.



Western Blotting

Image 3. Western blot analysis of Phospho-NFAT4 (Ser165) expression in various lysates

Please check the [product details page](#) for more images. Overall 4 images are available for ABIN6256165.