



[Go to Product page](#)

Datasheet for ABIN6256174

anti-CDC25A antibody (pSer178)

4 Images

Overview

Quantity:	100 µL
Target:	CDC25A
Binding Specificity:	pSer178
Reactivity:	Human, Mouse, Rat
Host:	Rabbit
Clonality:	Polyclonal
Conjugate:	This CDC25A antibody is un-conjugated
Application:	Western Blotting (WB), ELISA, Immunohistochemistry (IHC), Immunofluorescence (IF), Immunocytochemistry (ICC)

Product Details

Immunogen:	A synthesized peptide derived from human CDC25A around the phosphorylation site of Ser178.
Isotype:	IgG
Specificity:	Phospho-CDC25A (Ser178) Antibody detects endogenous levels of CDC25A only when phosphorylated at Serine 178.
Predicted Reactivity:	Bovine,Horse,Sheep,Rabbit,Dog
Purification:	The antibody is from purified rabbit serum by affinity purification via sequential chromatography on phospho- and non-phospho-peptide affinity columns.

Target Details

Target:	CDC25A
---------	--------

Target Details

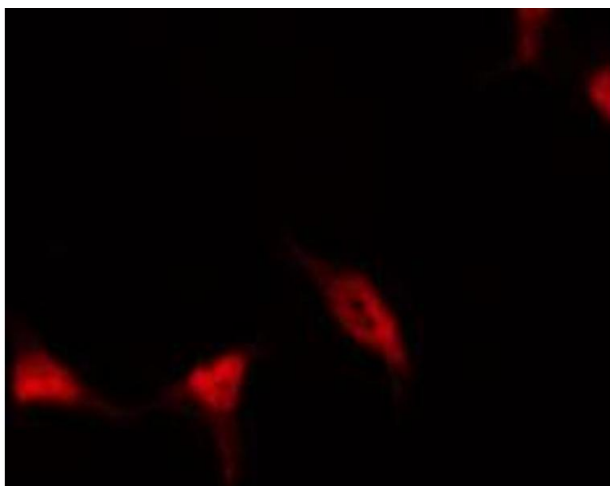
Alternative Name:	CDC25A (CDC25A Products)
Background:	Description: Tyrosine protein phosphatase which functions as a dosage-dependent inducer of mitotic progression. Directly dephosphorylates CDK1 and stimulates its kinase activity. Also dephosphorylates CDK2 in complex with cyclin E, in vitro. Gene: CDC25A
Molecular Weight:	59kDa
Gene ID:	993
UniProt:	P30304
Pathways:	Cell Division Cycle, Mitotic G1-G1/S Phases, M Phase

Application Details

Application Notes:	WB 1:500-1:2000, IHC 1:50-1:200, IF/ICC 1:100-1:500, ELISA(peptide) 1:20000-1:40000
Restrictions:	For Research Use only

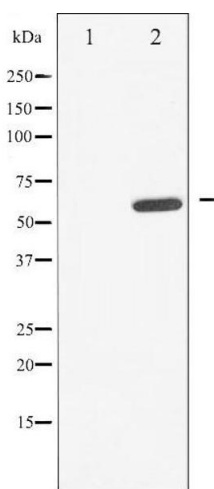
Handling

Format:	Liquid
Concentration:	1 mg/mL
Buffer:	Rabbit IgG in phosphate buffered saline , pH 7.4, 150 mM NaCl, 0.02 % sodium azide and 50 % glycerol.
Preservative:	Sodium azide
Precaution of Use:	This product contains Sodium azide: a POISONOUS AND HAZARDOUS SUBSTANCE which should be handled by trained staff only.
Storage:	-20 °C
Storage Comment:	Store at -20 °C. Stable for 12 months from date of receipt.
Expiry Date:	12 months



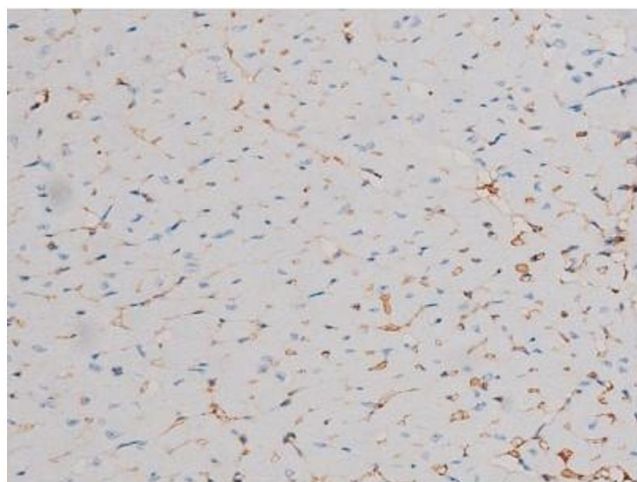
Immunofluorescence (fixed cells)

Image 1. ABIN6267464 staining HeLa by IF/ICC. The sample were fixed with PFA and permeabilized in 0.1% Triton X-100, then blocked in 10% serum for 45 minutes at 25°C. The primary antibody was diluted at 1/200 and incubated with the sample for 1 hour at 37°C. An Alexa Fluor 594 conjugated goat anti-rabbit IgG (H+L) Ab, diluted at 1/600, was used as the secondary antibody.



Western Blotting

Image 2. Western blot analysis of CDC25A phosphorylation expression in UV treated A549 whole cell lysates, The lane on the left is treated with the antigen-specific peptide.



Immunohistochemistry

Image 3. ABIN6267464 at 1/200 staining Mouse heart tissue sections by IHC-P. The tissue was formaldehyde fixed and a heat mediated antigen retrieval step in citrate buffer was performed. The tissue was then blocked and incubated with the antibody for 1.5 hours at 22°C. An HRP conjugated goat anti-rabbit antibody was used as the secondary.

Please check the [product details page](#) for more images. Overall 4 images are available for ABIN6256174.