

Datasheet for ABIN6256178  
**anti-MAP2K3 antibody (pSer189)**[Go to Product page](#)

## 4 Images

## Overview

Quantity:	100 µL
Target:	MAP2K3
Binding Specificity:	pSer189
Reactivity:	Human, Mouse, Rat
Host:	Rabbit
Clonality:	Polyclonal
Conjugate:	This MAP2K3 antibody is un-conjugated
Application:	Western Blotting (WB), Immunohistochemistry (IHC), ELISA, Immunofluorescence (IF), Immunocytochemistry (ICC)

## Product Details

Immunogen:	A synthesized peptide derived from human MKK3 around the phosphorylation site of Ser189.
Isotype:	IgG
Specificity:	Phospho-MKK3 (Ser189) Antibody detects endogenous levels of MKK3 only when phosphorylated at Serine 189.
Predicted Reactivity:	Pig,Bovine,Horse,Sheep,Rabbit,Dog,Chicken,Xenopus
Purification:	The antibody is from purified rabbit serum by affinity purification via sequential chromatography on phospho- and non-phospho-peptide affinity columns.

## Target Details

Target:	MAP2K3
---------	--------

## Target Details

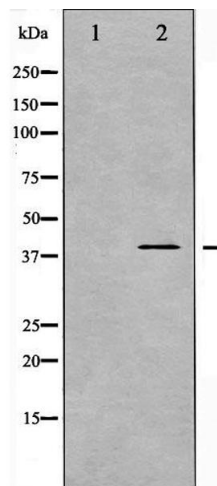
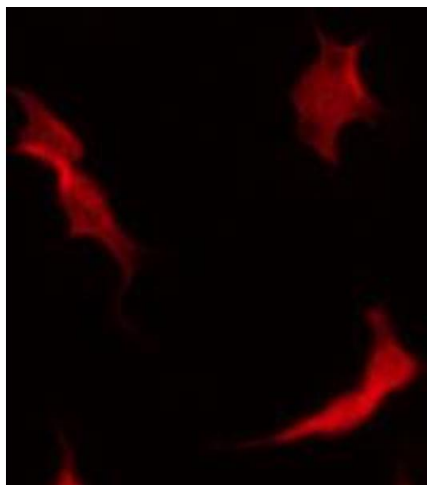
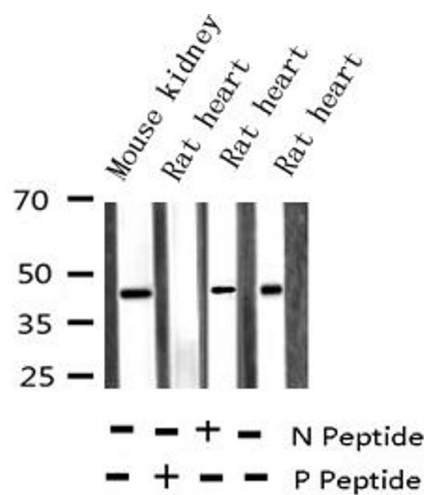
Alternative Name:	MAP2K3 ( <a href="#">MAP2K3 Products</a> )
Background:	<p>Description: Dual specificity kinase. Is activated by cytokines and environmental stress in vivo. Catalyzes the concomitant phosphorylation of a threonine and a tyrosine residue in the MAP kinase p38. Part of a signaling cascade that begins with the activation of the adrenergic receptor ADRA1B and leads to the activation of MAPK14.</p> <p>Gene: MAP2K3</p>
Molecular Weight:	40kDa
Gene ID:	5606
UniProt:	<a href="#">P46734</a>
Pathways:	<a href="#">MAPK Signaling</a> , <a href="#">TLR Signaling</a> , <a href="#">Activation of Innate immune Response</a> , <a href="#">Toll-Like Receptors Cascades</a> , <a href="#">Autophagy</a> , <a href="#">Signaling Events mediated by VEGFR1 and VEGFR2</a>

## Application Details

Application Notes:	WB 1:500-1:2000, IHC 1:50-1:200, IF/ICC 1:100-1:500, ELISA(peptide) 1:20000-1:40000
Restrictions:	For Research Use only

## Handling

Format:	Liquid
Concentration:	1 mg/mL
Buffer:	Rabbit IgG in phosphate buffered saline , pH 7.4, 150 mM NaCl, 0.02 % sodium azide and 50 % glycerol.
Preservative:	Sodium azide
Precaution of Use:	This product contains Sodium azide: a POISONOUS AND HAZARDOUS SUBSTANCE which should be handled by trained staff only.
Storage:	-20 °C
Storage Comment:	Store at -20 °C. Stable for 12 months from date of receipt.
Expiry Date:	12 months



### Western Blotting

**Image 1.** Western blot analysis of Phospho-MKK3 (Ser189) expression in various lysates

### Immunofluorescence (fixed cells)

**Image 2.** ABIN6267536 staining MDA-MB-435 by IF/ICC. The sample were fixed with PFA and permeabilized in 0.1% Triton X-100, then blocked in 10% serum for 45 minutes at 25°C. The primary antibody was diluted at 1/200 and incubated with the sample for 1 hour at 37°C. An Alexa Fluor 594 conjugated goat anti-rabbit IgG (H+L) Ab, diluted at 1/600, was used as the secondary antibody.

### Western Blotting

**Image 3.** Western blot analysis of MKK3 phosphorylation expression in MDA-MB-435 whole cell lysates, The lane on the left is treated with the antigen-specific peptide.

Please check the [product details page](#) for more images. Overall 4 images are available for ABIN6256178.