



Datasheet for ABIN6256197  
**anti-CDC25C antibody (pSer216)**



[Go to Product page](#)

3 Images

### Overview

Quantity:	100 µL
Target:	CDC25C
Binding Specificity:	pSer216
Reactivity:	Human, Mouse
Host:	Rabbit
Clonality:	Polyclonal
Conjugate:	This CDC25C antibody is un-conjugated
Application:	Western Blotting (WB), ELISA, Immunohistochemistry (IHC), Immunofluorescence (IF), Immunocytochemistry (ICC)

### Product Details

Immunogen:	A synthesized peptide derived from human CDC25C around the phosphorylation site of Ser216.
Isotype:	IgG
Specificity:	Phospho-CDC25C (Ser216) Antibody detects endogenous levels of CDC25C only when phosphorylated at Serine 216.
Predicted Reactivity:	Horse,Dog,Xenopus
Purification:	The antibody is from purified rabbit serum by affinity purification via sequential chromatography on phospho- and non-phospho-peptide affinity columns.

### Target Details

Target:	CDC25C
---------	--------

## Target Details

---

Alternative Name:	<a href="#">CDC25C (CDC25C Products)</a>
Background:	Description: Functions as a dosage-dependent inducer in mitotic control. Tyrosine protein phosphatase required for progression of the cell cycle. When phosphorylated, highly effective in activating G2 cells into prophase. Directly dephosphorylates CDK1 and activates its kinase activity. Gene: CDC25C
Molecular Weight:	60kDa
Gene ID:	995
UniProt:	<a href="#">P30307</a>
Pathways:	<a href="#">Cell Division Cycle, M Phase</a>

## Application Details

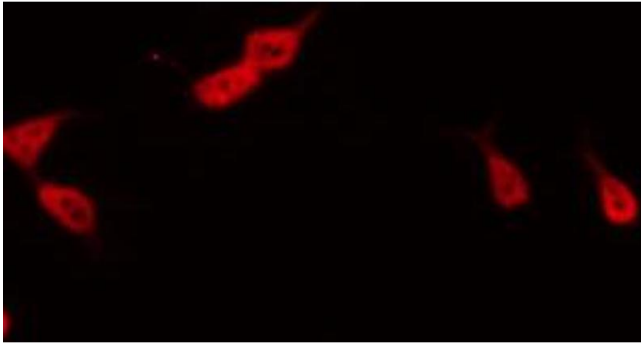
---

Application Notes:	WB 1:500-1:2000, IHC 1:50-1:200, IF/ICC 1:100-1:500, ELISA(peptide) 1:20000-1:40000
Restrictions:	For Research Use only

## Handling

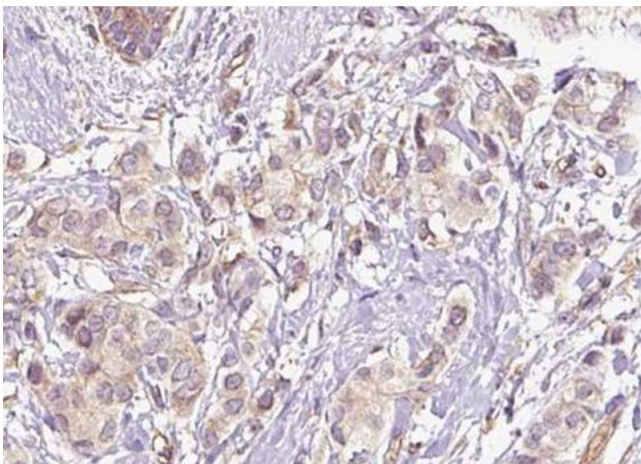
---

Format:	Liquid
Concentration:	1 mg/mL
Buffer:	Rabbit IgG in phosphate buffered saline , pH 7.4, 150 mM NaCl, 0.02 % sodium azide and 50 % glycerol.
Preservative:	Sodium azide
Precaution of Use:	This product contains Sodium azide: a POISONOUS AND HAZARDOUS SUBSTANCE which should be handled by trained staff only.
Storage:	-20 °C
Storage Comment:	Store at -20 °C. Stable for 12 months from date of receipt.
Expiry Date:	12 months



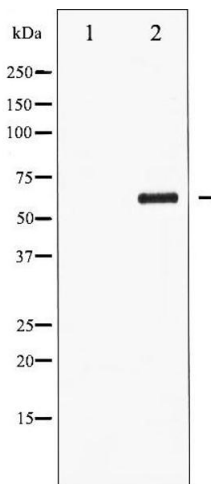
### Immunofluorescence (fixed cells)

**Image 1.** ABIN6267469 staining RAW264.7 by IF/ICC. The sample were fixed with PFA and permeabilized in 0.1% Triton X-100,then blocked in 10% serum for 45 minutes at 25°C. The primary antibody was diluted at 1/200 and incubated with the sample for 1 hour at 37°C. An Alexa Fluor 594 conjugated goat anti-rabbit IgG (H+L) Ab, diluted at 1/600, was used as the secondary antibody.



### Immunohistochemistry

**Image 2.** ABIN6267469 at 1/100 staining human breast carcinoma tissue sections by IHC-P. The tissue was formaldehyde fixed and a heat mediated antigen retrieval step in citrate buffer was performed. The tissue was then blocked and incubated with the antibody for 1.5 hours at 22°C. An HRP conjugated goat anti-rabbit antibody was used as the secondary.



### Western Blotting

**Image 3.** Western blot analysis of CDC25C phosphorylation expression in serum treated HuvEc whole cell lysates,The lane on the left is treated with the antigen-specific peptide.