

Datasheet for ABIN6256204
anti-RPS6 antibody (pSer235)

3 Images

[Go to Product page](#)

Overview

Quantity:	100 µL
Target:	RPS6
Binding Specificity:	pSer235
Reactivity:	Human, Mouse, Rat
Host:	Rabbit
Clonality:	Polyclonal
Conjugate:	This RPS6 antibody is un-conjugated
Application:	Western Blotting (WB), ELISA, Immunofluorescence (IF), Immunocytochemistry (ICC)

Product Details

Immunogen:	A synthesized peptide derived from human RPS6 around the phosphorylation site of Ser235.
Isotype:	IgG
Specificity:	Phospho-RPS6 (Ser235) Antibody detects endogenous levels of RPS6 only when phosphorylated at Serine 235.
Predicted Reactivity:	Pig,Zebrafish,Bovine,Horse,Sheep,Rabbit,Dog,Chicken,Xenopus
Purification:	The antibody is from purified rabbit serum by affinity purification via sequential chromatography on phospho- and non-phospho-peptide affinity columns.

Target Details

Target:	RPS6
---------	------

Target Details

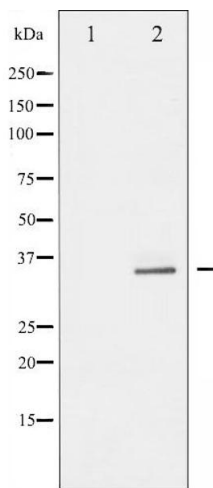
Alternative Name:	RPS6 (RPS6 Products)
Background:	Description: May play an important role in controlling cell growth and proliferation through the selective translation of particular classes of mRNA. Gene: RPS6
Molecular Weight:	32kDa
Gene ID:	6194
UniProt:	P62753
Pathways:	Carbohydrate Homeostasis , Ribonucleoprotein Complex Subunit Organization , Ribosome Assembly

Application Details

Application Notes:	WB 1:500-1:2000, IF/ICC 1:100-1:500, ELISA(peptide) 1:20000-1:40000
Restrictions:	For Research Use only

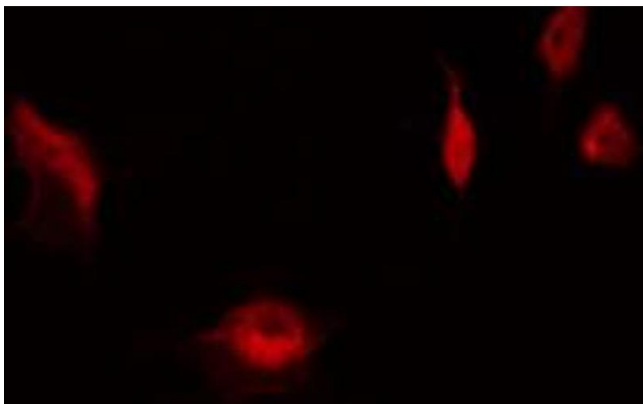
Handling

Format:	Liquid
Concentration:	1 mg/mL
Buffer:	Rabbit IgG in phosphate buffered saline , pH 7.4, 150 mM NaCl, 0.02 % sodium azide and 50 % glycerol.
Preservative:	Sodium azide
Precaution of Use:	This product contains Sodium azide: a POISONOUS AND HAZARDOUS SUBSTANCE which should be handled by trained staff only.
Storage:	-20 °C
Storage Comment:	Store at -20 °C. Stable for 12 months from date of receipt.
Expiry Date:	12 months



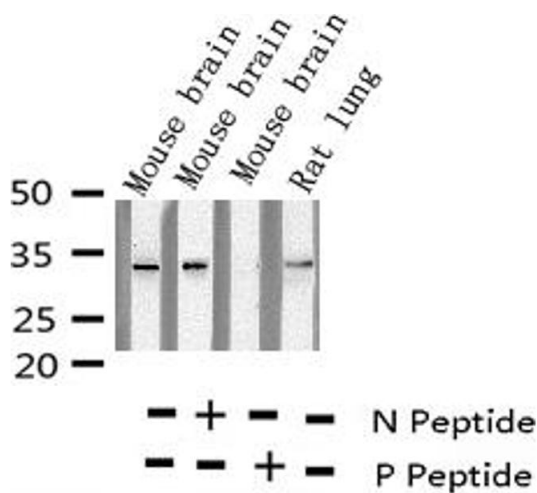
Western Blotting

Image 1. Western blot analysis of S6 Ribosomal Protein phosphorylation expression in serum treated 293 whole cell lysates, The lane on the left is treated with the antigen-specific peptide.



Immunofluorescence (fixed cells)

Image 2. ABIN6267563 staining HeLa by IF/ICC. The sample were fixed with PFA and permeabilized in 0.1% Triton X-100, then blocked in 10% serum for 45 minutes at 25°C. The primary antibody was diluted at 1/200 and incubated with the sample for 1 hour at 37°C. An Alexa Fluor 594 conjugated goat anti-rabbit IgG (H+L) Ab, diluted at 1/600, was used as the secondary antibody.



Western Blotting

Image 3. Western blot analysis of Phospho-S6 Ribosomal Protein (Ser235) expression in various lysates