

Datasheet for ABIN6256247

**anti-Progesterone Receptor antibody (pSer294)**[Go to Product page](#)**3** Images

## Overview

Quantity:	100 µL
Target:	Progesterone Receptor (PGR)
Binding Specificity:	pSer294
Reactivity:	Human, Mouse, Rat, Monkey
Host:	Rabbit
Clonality:	Polyclonal
Conjugate:	This Progesterone Receptor antibody is un-conjugated
Application:	Western Blotting (WB), ELISA, Immunofluorescence (IF), Immunocytochemistry (ICC)

## Product Details

Immunogen:	A synthesized peptide derived from human Progesterone Receptor around the phosphorylation site of Serine 294
Isotype:	IgG
Specificity:	Phospho-Progesterone Receptor (Ser294) Antibody detects endogenous levels of Progesterone Receptor only when phosphorylated at Serine 294
Cross-Reactivity:	Human, Monkey, Mouse (Murine), Rat (Rattus)
Purification:	The antibody is from purified rabbit serum by affinity purification via sequential chromatography on phospho- and non-phospho-peptide affinity columns.

## Target Details

Target:	Progesterone Receptor (PGR)
---------	-----------------------------

## Target Details

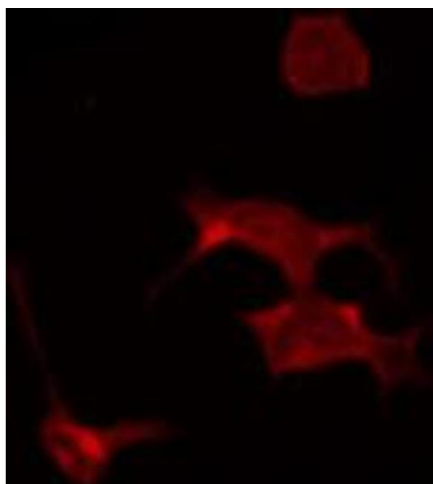
Alternative Name:	Progesterone Receptor ( <a href="#">PGR Products</a> )
Background:	<p>Description: The steroid hormones and their receptors are involved in the regulation of eukaryotic gene expression and affect cellular proliferation and differentiation in target tissues.</p> <p>Depending on the isoform, progesterone receptor functions as transcriptional activator or repressor.</p> <p>Gene: PGR</p>
Molecular Weight:	99kDa
Gene ID:	5241
UniProt:	<a href="#">P06401</a>
Pathways:	<a href="#">Nuclear Receptor Transcription Pathway</a> , <a href="#">Intracellular Steroid Hormone Receptor Signaling Pathway</a> , <a href="#">Steroid Hormone Mediated Signaling Pathway</a> , <a href="#">Smooth Muscle Cell Migration</a>

## Application Details

Application Notes:	WB 1:500-1:2000 IF/ICC 1:100-1:500
Restrictions:	For Research Use only

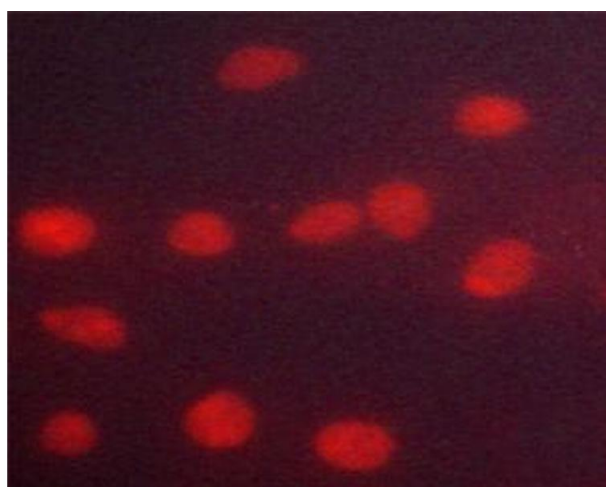
## Handling

Format:	Liquid
Concentration:	1 mg/mL
Buffer:	Rabbit IgG in phosphate buffered saline , pH 7.4, 150 mM NaCl, 0.02 % sodium azide and 50 % glycerol.
Preservative:	Sodium azide
Precaution of Use:	This product contains Sodium azide: a POISONOUS AND HAZARDOUS SUBSTANCE which should be handled by trained staff only.
Storage:	-20 °C
Storage Comment:	Store at -20 °C.Stable for 12 months from date of receipt
Expiry Date:	12 months



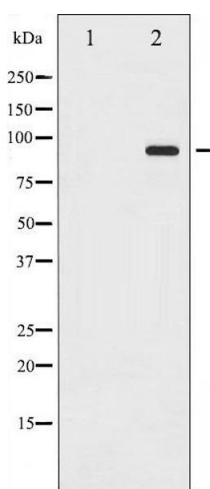
#### Immunofluorescence (fixed cells)

**Image 1.** ABIN6267318 staining COS7 by IF/ICC. The sample were fixed with PFA and permeabilized in 0.1% Triton X-100, then blocked in 10% serum for 45 minutes at 25°C. The primary antibody was diluted at 1/200 and incubated with the sample for 1 hour at 37°C. An Alexa Fluor 594 conjugated goat anti-rabbit IgG (H+L) Ab, diluted at 1/600, was used as the secondary antibody.



#### Immunofluorescence (fixed cells)

**Image 2.** ABIN6267318 staining HeLa cells by ICC/IF. Cells were fixed with PFA and permeabilized in 0.1% saponin prior to blocking in 10% serum for 45 minutes at 37°C. The primary antibody was diluted 1/400 and incubated with the sample for 1 hour at 37°C. A Alexa Fluor® 594 conjugated goat polyclonal to rabbit IgG (H+L), diluted 1/600 was used as secondary antibody.



#### Western Blotting

**Image 3.** Western blot analysis of Progesterone Receptor phosphorylation expression in Etoposide treated 293 whole cell lysates, The lane on the left is treated with the antigen-specific peptide.