



[Go to Product page](#)

Datasheet for ABIN6256263

anti-Synaptotagmin antibody (pSer309)

4 Images

Overview

Quantity:	100 µL
Target:	Synaptotagmin (SYT)
Binding Specificity:	pSer309
Reactivity:	Rat, Mouse, Human
Host:	Rabbit
Clonality:	Polyclonal
Conjugate:	This Synaptotagmin antibody is un-conjugated
Application:	Western Blotting (WB), Immunohistochemistry (IHC), ELISA, Immunofluorescence (IF), Immunocytochemistry (ICC)

Product Details

Immunogen:	A synthesized peptide derived from human Synaptotagmin around the phosphorylation site of Serine 309
Isotype:	IgG
Specificity:	Phospho-Synaptotagmin (Ser309) Antibody detects endogenous levels of Synaptotagmin only when phosphorylated at Serine 309
Cross-Reactivity:	Human, Mouse (Murine), Rat (Rattus)
Purification:	The antibody is from purified rabbit serum by affinity purification via sequential chromatography on phospho- and non-phospho-peptide affinity columns.

Target Details

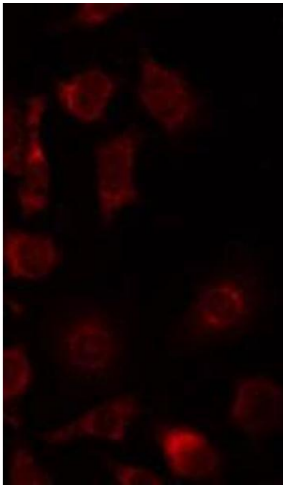
Target:	Synaptotagmin (SYT)
Alternative Name:	Synaptotagmin (SYT Products)
Background:	<p>Description: May have a regulatory role in the membrane interactions during trafficking of synaptic vesicles at the active zone of the synapse. It binds acidic phospholipids with a specificity that requires the presence of both an acidic head group and a diacyl backbone. A Ca²⁺-dependent interaction between synaptotagmin and putative receptors for activated protein kinase C has also been reported. It can bind to at least three additional proteins in a Ca²⁺-independent manner, these are neuexins, syntaxin and AP2. Plays a role in dendrite formation by melanocytes (PubMed:23999003).</p> <p>Gene: SYT1</p>
Molecular Weight:	47kDa
Gene ID:	6857
UniProt:	P21579 , Q8N9I0

Application Details

Application Notes:	WB 1:500-1:2000 IHC 1:50-1:200, IF/ICC 1:100-1:500
Restrictions:	For Research Use only

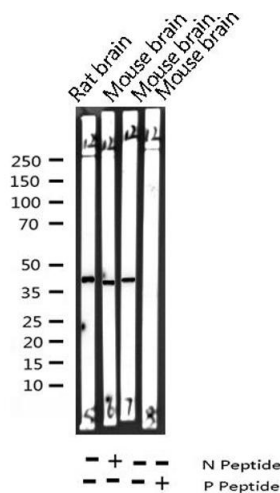
Handling

Format:	Liquid
Concentration:	1 mg/mL
Buffer:	Rabbit IgG in phosphate buffered saline , pH 7.4, 150 mM NaCl, 0.02 % sodium azide and 50 % glycerol.
Preservative:	Sodium azide
Precaution of Use:	This product contains Sodium azide: a POISONOUS AND HAZARDOUS SUBSTANCE which should be handled by trained staff only.
Storage:	-20 °C
Storage Comment:	Store at -20 °C.Stable for 12 months from date of receipt
Expiry Date:	12 months



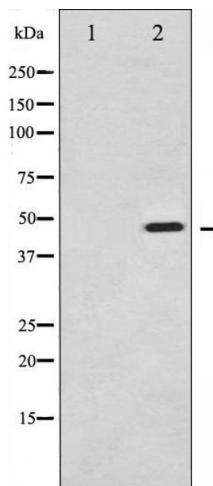
Immunofluorescence (fixed cells)

Image 1. ABIN6267434 staining 293 by IF/ICC. The sample were fixed with PFA and permeabilized in 0.1% Triton X-100, then blocked in 10% serum for 45 minutes at 25°C. The primary antibody was diluted at 1/200 and incubated with the sample for 1 hour at 37°C. An Alexa Fluor 594 conjugated goat anti-rabbit IgG (H+L) Ab, diluted at 1/600, was used as the secondary antibody.



Western Blotting

Image 2. Western blot analysis of Phospho-Synaptotagmin (Ser309) expression in various lysates



Western Blotting

Image 3. Western blot analysis of Synaptotagmin phosphorylation expression in Sobital treated 293 whole cell lysates, The lane on the left is treated with the antigen-specific peptide.

Please check the [product details page](#) for more images. Overall 4 images are available for ABIN6256263.