



[Go to Product page](#)

Datasheet for ABIN6256275
anti-CCR5 antibody (pSer336)

3 Images

Overview

Quantity:	100 µL
Target:	CCR5
Binding Specificity:	pSer336
Reactivity:	Human, Mouse, Rat
Host:	Rabbit
Clonality:	Polyclonal
Conjugate:	This CCR5 antibody is un-conjugated
Application:	Western Blotting (WB), ELISA, Immunofluorescence (IF), Immunocytochemistry (ICC)

Product Details

Immunogen:	A synthesized peptide derived from human CCR5 around the phosphorylation site of Ser336.
Isotype:	IgG
Specificity:	Phospho-CCR5 (Ser336) Antibody detects endogenous levels of CCR5 only when phosphorylated at Serine 336.
Predicted Reactivity:	Pig,Bovine,Rabbit,Chicken
Purification:	The antibody is from purified rabbit serum by affinity purification via sequential chromatography on phospho- and non-phospho-peptide affinity columns.

Target Details

Target:	CCR5
---------	------

Target Details

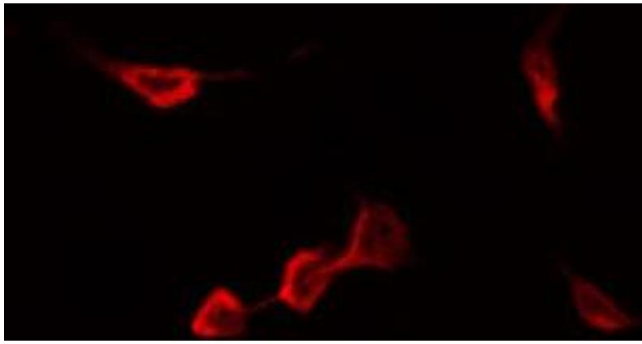
Alternative Name:	CCR5 (CCR5 Products)
Background:	Description: Receptor for a number of inflammatory CC-chemokines including CCL3/MIP-1-alpha, CCL4/MIP-1-beta and RANTES and subsequently transduces a signal by increasing the intracellular calcium ion level. May play a role in the control of granulocytic lineage proliferation or differentiation. Gene: CCR5
Molecular Weight:	40kDa
Gene ID:	1234
UniProt:	P51681
Pathways:	Cellular Response to Molecule of Bacterial Origin , cAMP Metabolic Process , Regulation of Cell Size

Application Details

Application Notes:	WB 1:500-1:2000, IF/ICC 1:100-1:500, ELISA(peptide) 1:20000-1:40000
Restrictions:	For Research Use only

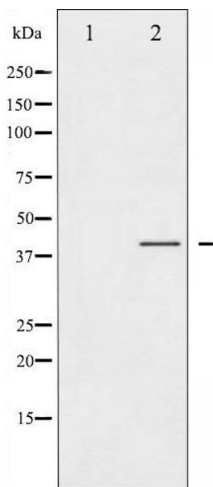
Handling

Format:	Liquid
Concentration:	1 mg/mL
Buffer:	Rabbit IgG in phosphate buffered saline , pH 7.4, 150 mM NaCl, 0.02 % sodium azide and 50 % glycerol.
Preservative:	Sodium azide
Precaution of Use:	This product contains Sodium azide: a POISONOUS AND HAZARDOUS SUBSTANCE which should be handled by trained staff only.
Storage:	-20 °C
Storage Comment:	Store at -20 °C. Stable for 12 months from date of receipt.
Expiry Date:	12 months



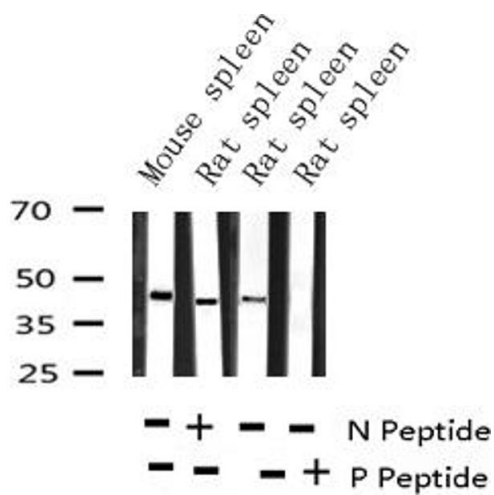
Immunofluorescence (fixed cells)

Image 1. ABIN6267548 staining Hela by IF/ICC. The sample were fixed with PFA and permeabilized in 0.1% Triton X-100, then blocked in 10% serum for 45 minutes at 25°C. The primary antibody was diluted at 1/200 and incubated with the sample for 1 hour at 37°C. An Alexa Fluor 594 conjugated goat anti-rabbit IgG (H+L) Ab, diluted at 1/600, was used as the secondary antibody.



Western Blotting

Image 2. Western blot analysis of CCR5 phosphorylation expression in Jurkat whole cell lysates, The lane on the left is treated with the antigen-specific peptide.



Western Blotting

Image 3. Western blot analysis of Phospho-CCR5 (Ser336) expression in various lysates