

Datasheet for ABIN6256292

**anti-NFKBIA antibody (pSer32, pSer36)**

12 Images

[Go to Product page](#)

## Overview

Quantity:	100 µL
Target:	NFKBIA
Binding Specificity:	pSer32, pSer36
Reactivity:	Human, Mouse, Rat
Host:	Rabbit
Clonality:	Polyclonal
Conjugate:	This NFKBIA antibody is un-conjugated
Application:	Western Blotting (WB), ELISA, Immunohistochemistry (IHC), Immunofluorescence (IF), Immunocytochemistry (ICC)

## Product Details

Immunogen:	A synthesized peptide derived from human I kappaB- alpha around the phosphorylation site of Serine 32/Serine 36
Isotype:	IgG
Specificity:	Phospho-I kappaB- alpha (Ser32/Ser36) Antibody detects endogenous levels of I kappaB- alpha only when phosphorylated at Serine 32/Serine 36
Cross-Reactivity:	Human, Mouse (Murine), Rat (Rattus)
Purification:	The antibody is from purified rabbit serum by affinity purification via sequential chromatography on phospho- and non-phospho-peptide affinity columns.

## Target Details

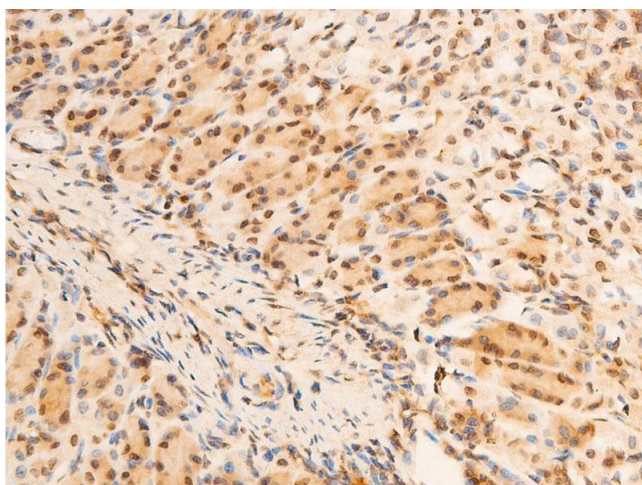
Target:	NFKBIA
Alternative Name:	I kappaB alpha ( <a href="#">NFKBIA Products</a> )
Background:	<p>Description: Inhibits the activity of dimeric NF-kappa-B/REL complexes by trapping REL dimers in the cytoplasm through masking of their nuclear localization signals. On cellular stimulation by immune and proinflammatory responses, becomes phosphorylated promoting ubiquitination and degradation, enabling the dimeric RELA to translocate to the nucleus and activate transcription.</p> <p>Gene: NFKBIA</p>
Molecular Weight:	39kDa
Gene ID:	4792
UniProt:	<a href="#">P25963</a>
Pathways:	<a href="#">NF-kappaB Signaling</a> , <a href="#">TCR Signaling</a> , <a href="#">TLR Signaling</a> , <a href="#">Fc-epsilon Receptor Signaling Pathway</a> , <a href="#">Activation of Innate immune Response</a> , <a href="#">Cellular Response to Molecule of Bacterial Origin</a> , <a href="#">Maintenance of Protein Location</a> , <a href="#">Hepatitis C</a> , <a href="#">Protein targeting to Nucleus</a> , <a href="#">Toll-Like Receptors Cascades</a> , <a href="#">BCR Signaling</a>

## Application Details

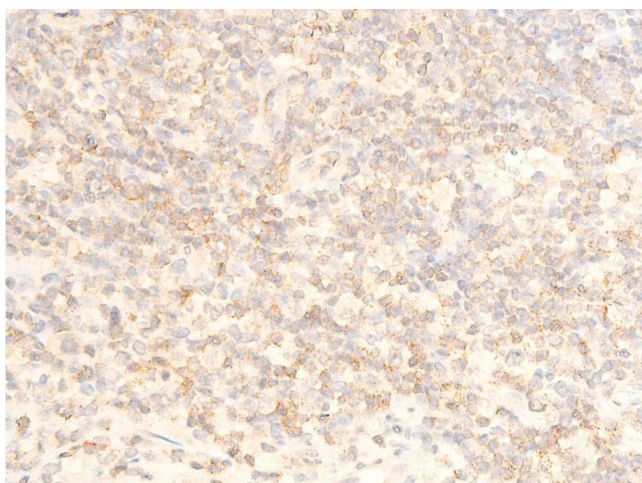
Application Notes:	WB 1:500-1:2000 IHC 1:50-1:500 IF/ICC 1:100-1:500
Restrictions:	For Research Use only

## Handling

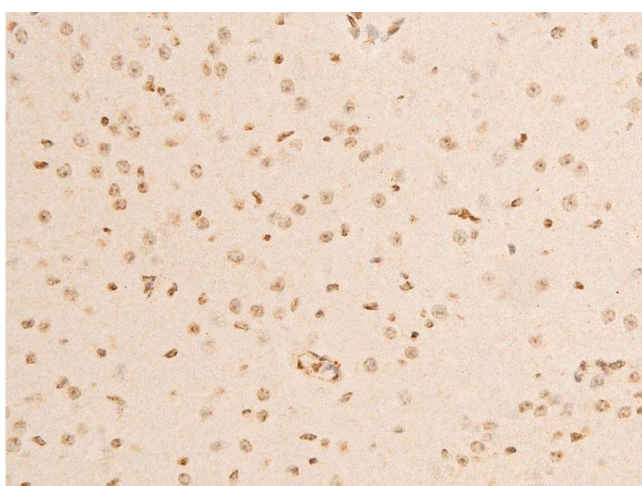
Format:	Liquid
Concentration:	1 mg/mL
Buffer:	Rabbit IgG in phosphate buffered saline , pH 7.4, 150 mM NaCl, 0.02 % sodium azide and 50 % glycerol.
Preservative:	Sodium azide
Precaution of Use:	This product contains Sodium azide: a POISONOUS AND HAZARDOUS SUBSTANCE which should be handled by trained staff only.
Storage:	-20 °C
Storage Comment:	Store at -20 °C.Stable for 12 months from date of receipt

**Immunohistochemistry**

**Image 1.** ABIN6267069 at 1/100 staining mouse gastric tissue sections by IHC-P. The tissue was formaldehyde fixed and a heat mediated antigen retrieval step in citrate buffer was performed. The tissue was then blocked and incubated with the antibody for 1.5 hours at 22°C. An HRP conjugated goat anti-rabbit antibody was used as the secondary.

**Immunohistochemistry**

**Image 2.** ABIN6267069 at 1/100 staining human appendiceal tissue sections by IHC-P. The tissue was formaldehyde fixed and a heat mediated antigen retrieval step in citrate buffer was performed. The tissue was then blocked and incubated with the antibody for 1.5 hours at 22°C. An HRP conjugated goat anti-rabbit antibody was used as the secondary.

**Immunohistochemistry**

**Image 3.** ABIN6267069 at 1/100 staining mouse brain tissue sections by IHC-P. The tissue was formaldehyde fixed and a heat mediated antigen retrieval step in citrate buffer was performed. The tissue was then blocked and incubated with the antibody for 1.5 hours at 22°C. An HRP conjugated goat anti-rabbit antibody was used as the secondary.

Please check the [product details page](#) for more images. Overall 12 images are available for ABIN6256292.