

Datasheet for ABIN6256307  
**anti-ELK1 antibody (pSer383)**[Go to Product page](#)

## 4 Images

## Overview

Quantity:	100 µL
Target:	ELK1
Binding Specificity:	pSer383
Reactivity:	Human, Mouse, Rat
Host:	Rabbit
Clonality:	Polyclonal
Conjugate:	This ELK1 antibody is un-conjugated
Application:	Western Blotting (WB), Immunohistochemistry (IHC), ELISA, Immunoprecipitation (IP), Immunofluorescence (IF), Immunocytochemistry (ICC)

## Product Details

Immunogen:	A synthesized peptide derived from human Elk1 around the phosphorylation site of Serine 383
Isotype:	IgG
Specificity:	Phospho-Elk1 (Ser383) Antibody detects endogenous levels of Elk1 only when phosphorylated at Serine 383
Cross-Reactivity:	Human, Mouse (Murine), Rat (Rattus)
Purification:	The antibody is from purified rabbit serum by affinity purification via sequential chromatography on phospho- and non-phospho-peptide affinity columns.

## Target Details

Target:	ELK1
---------	------

## Target Details

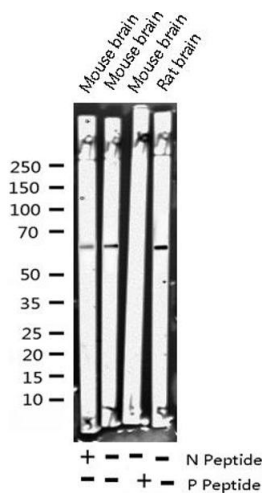
Alternative Name:	Elk1 ( <a href="#">ELK1 Products</a> )
Background:	<p>Description: Transcription factor that binds to purine-rich DNA sequences. Forms a ternary complex with SRF and the ETS and SRF motifs of the serum response element (SRE) on the promoter region of immediate early genes such as FOS and IER2. Induces target gene transcription upon JNK-signaling pathway stimulation (By similarity).</p> <p>Gene: ELK1</p>
Molecular Weight:	62kDa
Gene ID:	2002
UniProt:	<a href="#">P19419</a>
Pathways:	<a href="#">MAPK Signaling</a> , <a href="#">Neurotrophin Signaling Pathway</a> , <a href="#">Activation of Innate immune Response</a> , <a href="#">Toll-Like Receptors Cascades</a> , <a href="#">Signaling of Hepatocyte Growth Factor Receptor</a> , <a href="#">BCR Signaling</a>

## Application Details

Application Notes:	WB 1:500-1:2000 IHC 1:50-1:200 IP, IF/ICC 1:100-1:500
Restrictions:	For Research Use only

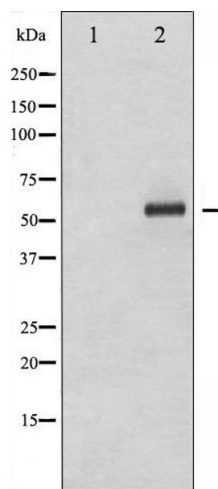
## Handling

Format:	Liquid
Concentration:	1 mg/mL
Buffer:	Rabbit IgG in phosphate buffered saline , pH 7.4, 150 mM NaCl, 0.02 % sodium azide and 50 % glycerol.
Preservative:	Sodium azide
Precaution of Use:	This product contains Sodium azide: a POISONOUS AND HAZARDOUS SUBSTANCE which should be handled by trained staff only.
Storage:	-20 °C
Storage Comment:	Store at -20 °C.Stable for 12 months from date of receipt
Expiry Date:	12 months



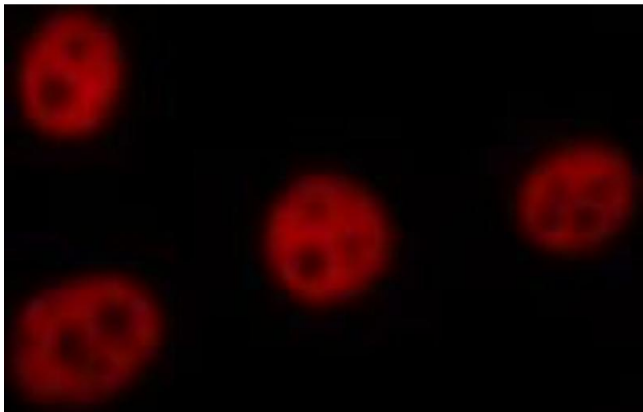
### Western Blotting

**Image 1.** Western blot analysis of Phospho-Elk1 (Ser383) expression in various lysates



### Western Blotting

**Image 2.** Western blot analysis of Elk1 phosphorylation expression in UV treated HeLa whole cell lysates, The lane on the left is treated with the antigen-specific peptide.



### Immunofluorescence (fixed cells)

**Image 3.** ABIN6267423 staining HeLa by IF/ICC. The sample were fixed with PFA and permeabilized in 0.1% Triton X-100, then blocked in 10% serum for 45 minutes at 25°C. The primary antibody was diluted at 1/200 and incubated with the sample for 1 hour at 37°C. An Alexa Fluor 594 conjugated goat anti-rabbit IgG (H+L) Ab, diluted at 1/600, was used as the secondary antibody.

Please check the [product details page](#) for more images. Overall 4 images are available for ABIN6256307.