

Datasheet for ABIN6256309  
**anti-ELK1 antibody (pSer389)**[Go to Product page](#)

## 4 Images

## Overview

Quantity:	100 µL
Target:	ELK1
Binding Specificity:	pSer389
Reactivity:	Human, Mouse, Rat
Host:	Rabbit
Clonality:	Polyclonal
Conjugate:	This ELK1 antibody is un-conjugated
Application:	Western Blotting (WB), Immunohistochemistry (IHC), ELISA, Immunoprecipitation (IP), Immunofluorescence (IF), Immunocytochemistry (ICC)

## Product Details

Immunogen:	A synthesized peptide derived from human ELK1 around the phosphorylation site of Ser389.
Isotype:	IgG
Specificity:	Phospho-ELK1 (Ser389) Antibody detects endogenous levels of ELK1 only when phosphorylated at Serine 389.
Predicted Reactivity:	Pig,Bovine,Horse,Sheep,Rabbit,Dog,Xenopus
Purification:	The antibody is from purified rabbit serum by affinity purification via sequential chromatography on phospho- and non-phospho-peptide affinity columns.

## Target Details

Target:	ELK1
---------	------

## Target Details

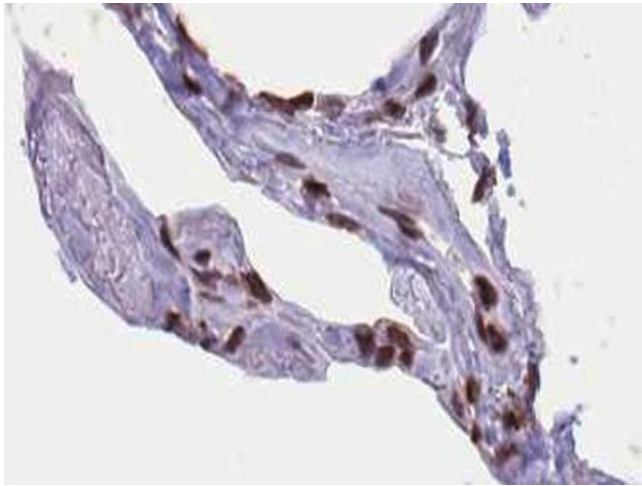
Alternative Name:	ELK1 ( <a href="#">ELK1 Products</a> )
Background:	<p>Description: Transcription factor that binds to purine-rich DNA sequences. Forms a ternary complex with SRF and the ETS and SRF motifs of the serum response element (SRE) on the promoter region of immediate early genes such as FOS and IER2. Induces target gene transcription upon JNK-signaling pathway stimulation (By similarity).</p> <p>Gene: ELK1</p>
Molecular Weight:	62kDa
Gene ID:	2002
UniProt:	<a href="#">P19419</a>
Pathways:	<a href="#">MAPK Signaling</a> , <a href="#">Neurotrophin Signaling Pathway</a> , <a href="#">Activation of Innate immune Response</a> , <a href="#">Toll-Like Receptors Cascades</a> , <a href="#">Signaling of Hepatocyte Growth Factor Receptor</a> , <a href="#">BCR Signaling</a>

## Application Details

Application Notes:	WB 1:500-1:2000, IHC 1:50-1:200, IP, IF/ICC 1:100-1:500, ELISA(peptide) 1:20000-1:40000
Restrictions:	For Research Use only

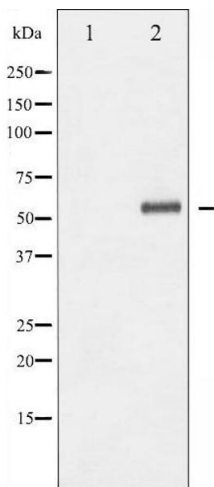
## Handling

Format:	Liquid
Concentration:	1 mg/mL
Buffer:	Rabbit IgG in phosphate buffered saline , pH 7.4, 150 mM NaCl, 0.02 % sodium azide and 50 % glycerol.
Preservative:	Sodium azide
Precaution of Use:	This product contains Sodium azide: a POISONOUS AND HAZARDOUS SUBSTANCE which should be handled by trained staff only.
Storage:	-20 °C
Storage Comment:	Store at -20 °C. Stable for 12 months from date of receipt.
Expiry Date:	12 months



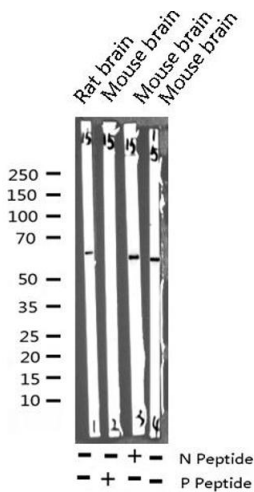
### Immunohistochemistry

**Image 1.** ABIN6267424 at 1/100 staining human lung tissue sections by IHC-P. The tissue was formaldehyde fixed and a heat mediated antigen retrieval step in citrate buffer was performed. The tissue was then blocked and incubated with the antibody for 1.5 hours at 22°C. An HRP conjugated goat anti-rabbit antibody was used as the secondary.



### Western Blotting

**Image 2.** Western blot analysis of Elk1 phosphorylation expression in UV treated Jurkat whole cell lysates. The lane on the left is treated with the antigen-specific peptide.



### Western Blotting

**Image 3.** Western blot analysis of Phospho-Elk1 (Ser389) expression in various lysates

Please check the [product details page](#) for more images. Overall 4 images are available for ABIN6256309.