

Datasheet for ABIN6256331
anti-RPS6KB2 antibody (pSer423)

3 Images

[Go to Product page](#)

Overview

Quantity:	100 µL
Target:	RPS6KB2
Binding Specificity:	pSer423
Reactivity:	Human, Mouse
Host:	Rabbit
Clonality:	Polyclonal
Conjugate:	This RPS6KB2 antibody is un-conjugated
Application:	Western Blotting (WB), ELISA, Immunofluorescence (IF), Immunocytochemistry (ICC)

Product Details

Immunogen:	A synthesized peptide derived from human p70 S6 Kinase beta around the phosphorylation site of Ser423.
Isotype:	IgG
Specificity:	Phospho-p70 S6 Kinase beta (Ser423) Antibody detects endogenous levels of p70 S6 Kinase beta only when phosphorylated at Serine 423.
Predicted Reactivity:	Pig,Bovine,Horse,Sheep,Dog
Purification:	The antibody is from purified rabbit serum by affinity purification via sequential chromatography on phospho- and non-phospho-peptide affinity columns.

Target Details

Target:	RPS6KB2
---------	---------

Target Details

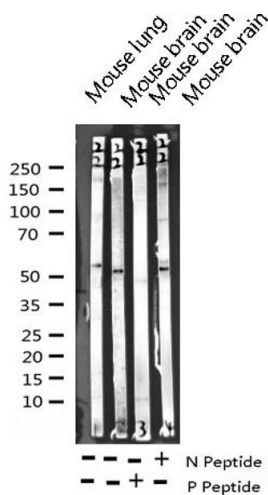
Alternative Name:	RPS6KB2 (RPS6KB2 Products)
Background:	Description: Phosphorylates specifically ribosomal protein S6. Gene: RPS6KB2
Molecular Weight:	53kDa
Gene ID:	6199
UniProt:	Q9UBS0
Pathways:	PI3K-Akt Signaling , RTK Signaling , AMPK Signaling , Fc-epsilon Receptor Signaling Pathway , EGFR Signaling Pathway , Neurotrophin Signaling Pathway

Application Details

Application Notes:	WB 1:500-1:2000, IF/ICC 1:100-1:500, ELISA(peptide) 1:20000-1:40000
Restrictions:	For Research Use only

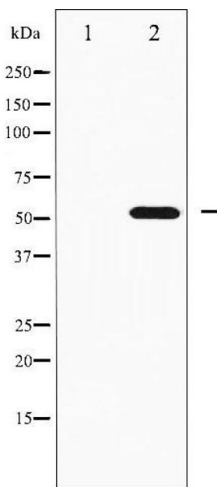
Handling

Format:	Liquid
Concentration:	1 mg/mL
Buffer:	Rabbit IgG in phosphate buffered saline , pH 7.4, 150 mM NaCl, 0.02 % sodium azide and 50 % glycerol.
Preservative:	Sodium azide
Precaution of Use:	This product contains Sodium azide: a POISONOUS AND HAZARDOUS SUBSTANCE which should be handled by trained staff only.
Storage:	-20 °C
Storage Comment:	Store at -20 °C. Stable for 12 months from date of receipt.
Expiry Date:	12 months



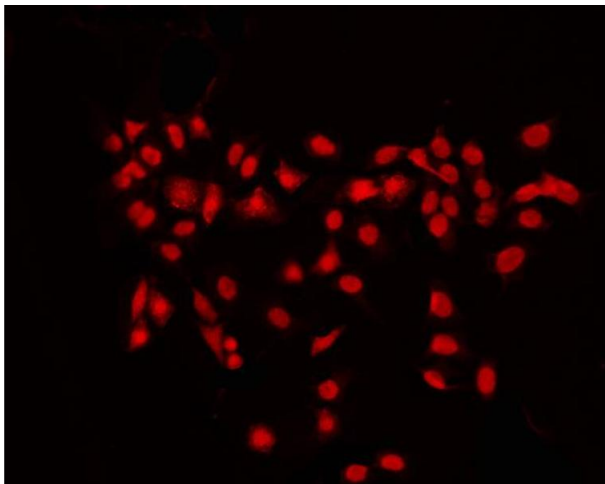
Western Blotting

Image 1. Western blot analysis of Phospho-p70 S6 Kinase beta (Ser423) expression in various lysates



Western Blotting

Image 2. Western blot analysis of p70 S6 Kinase beta phosphorylation expression in EGF treated K562 whole cell lysates, The lane on the left is treated with the antigen-specific peptide.



Immunofluorescence (fixed cells)

Image 3. ABIN6267695 staining K562 by IF/ICC. The sample were fixed with PFA and permeabilized in 0.1% Triton X-100, then blocked in 10% serum for 45 minutes at 25°C. The primary antibody was diluted at 1/200 and incubated with the sample for 1 hour at 37°C. An Alexa Fluor 594 conjugated goat anti-rabbit IgG (H+L) Ab, diluted at 1/600, was used as the secondary antibody.