



[Go to Product page](#)

Datasheet for ABIN6256357  
**anti-PTPN1 antibody (pSer50)**

4 Images

### Overview

Quantity:	100 µL
Target:	PTPN1
Binding Specificity:	pSer50
Reactivity:	Human, Mouse, Rat
Host:	Rabbit
Clonality:	Polyclonal
Conjugate:	This PTPN1 antibody is un-conjugated
Application:	Western Blotting (WB), ELISA, Immunohistochemistry (IHC), Immunofluorescence (IF), Immunocytochemistry (ICC)

### Product Details

Immunogen:	A synthesized peptide derived from human PTP1B around the phosphorylation site of Ser50.
Isotype:	IgG
Specificity:	Phospho-PTP1B (Ser50) Antibody detects endogenous levels of PTP1B only when phosphorylated at Serine 50.
Predicted Reactivity:	Pig,Zebrafish,Bovine,Horse,Sheep,Rabbit,Dog,Chicken,Xenopus
Purification:	The antibody is from purified rabbit serum by affinity purification via sequential chromatography on phospho- and non-phospho-peptide affinity columns.

### Target Details

Target:	PTPN1
---------	-------

## Target Details

---

Alternative Name:	PTPN1 ( <a href="#">PTPN1 Products</a> )
Background:	<p>Description: Tyrosine-protein phosphatase which acts as a regulator of endoplasmic reticulum unfolded protein response. Mediates dephosphorylation of EIF2AK3/PERK, inactivating the protein kinase activity of EIF2AK3/PERK. May play an important role in CKII- and p60c-src-induced signal transduction cascades. May regulate the EFNA5-EPHA3 signaling pathway which modulates cell reorganization and cell-cell repulsion. May also regulate the hepatocyte growth factor receptor signaling pathway through dephosphorylation of MET.</p> <p>Gene: PTPN1</p>
Molecular Weight:	49kDa
Gene ID:	5770
UniProt:	<a href="#">P18031</a>
Pathways:	<a href="#">TLR Signaling</a> , <a href="#">Response to Growth Hormone Stimulus</a> , <a href="#">ER-Nucleus Signaling</a> , <a href="#">Platelet-derived growth Factor Receptor Signaling</a>

## Application Details

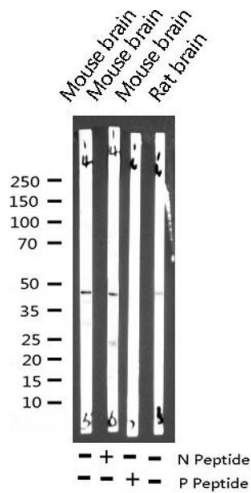
---

Application Notes:	WB 1:500-1:2000, IHC 1:50-1:200, IF/ICC 1:100-1:500, ELISA(peptide) 1:20000-1:40000
Restrictions:	For Research Use only

## Handling

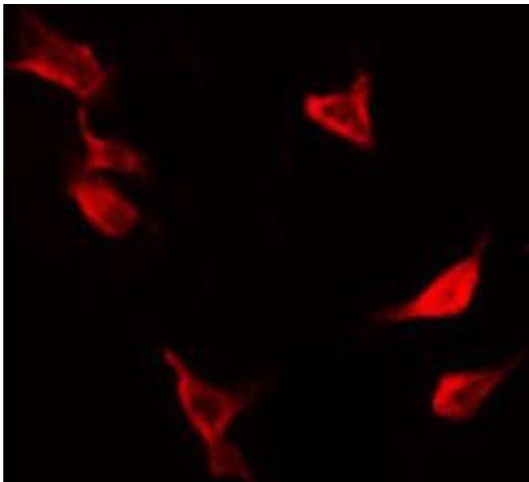
---

Format:	Liquid
Concentration:	1 mg/mL
Buffer:	Rabbit IgG in phosphate buffered saline , pH 7.4, 150 mM NaCl, 0.02 % sodium azide and 50 % glycerol.
Preservative:	Sodium azide
Precaution of Use:	This product contains Sodium azide: a POISONOUS AND HAZARDOUS SUBSTANCE which should be handled by trained staff only.
Storage:	-20 °C
Storage Comment:	Store at -20 °C. Stable for 12 months from date of receipt.
Expiry Date:	12 months



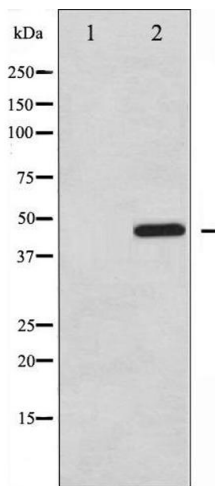
### Western Blotting

**Image 1.** Western blot analysis of Phospho-PTP1B (Ser50) expression in various lysates



### Immunofluorescence (fixed cells)

**Image 2.** ABIN6267416 staining Hela by IF/ICC. The sample were fixed with PFA and permeabilized in 0.1% Triton X-100, then blocked in 10% serum for 45 minutes at 25°C. The primary antibody was diluted at 1/200 and incubated with the sample for 1 hour at 37°C. An Alexa Fluor 594 conjugated goat anti-rabbit IgG (H+L) Ab, diluted at 1/600, was used as the secondary antibody.



### Western Blotting

**Image 3.** Western blot analysis of PTP1B phosphorylation expression in UV treated COS7 whole cell lysates, The lane on the left is treated with the antigen-specific peptide.

Please check the [product details page](#) for more images. Overall 4 images are available for ABIN6256357.