

Datasheet for ABIN6256377
anti-14-3-3 zeta antibody (pSer58)



[Go to Product page](#)

5 Images

Overview

| | |
|----------------------|--|
| Quantity: | 100 µL |
| Target: | 14-3-3 zeta (YWHAZ) |
| Binding Specificity: | pSer58 |
| Reactivity: | Human, Mouse, Rat |
| Host: | Rabbit |
| Clonality: | Polyclonal |
| Conjugate: | This 14-3-3 zeta antibody is un-conjugated |
| Application: | Western Blotting (WB), Immunohistochemistry (IHC), ELISA, Immunofluorescence (IF), Immunocytochemistry (ICC) |

Product Details

| | |
|-----------------------|---|
| Immunogen: | A synthesized peptide derived from human 14-3-3 zeta around the phosphorylation site of Ser58. |
| Isotype: | IgG |
| Specificity: | Phospho-14-3-3 zeta (Ser58) Antibody detects endogenous levels of 14-3-3 zeta only when phosphorylated at Serine 58. |
| Predicted Reactivity: | Pig,Zebrafish,Bovine,Horse,Sheep,Rabbit,Dog,Chicken,Xenopus |
| Purification: | The antibody is from purified rabbit serum by affinity purification via sequential chromatography on phospho- and non-phospho-peptide affinity columns. |

Target Details

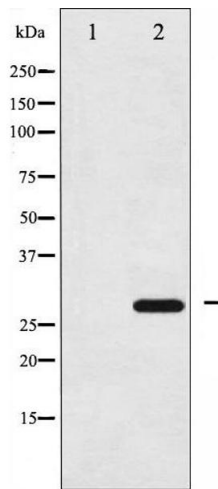
| | |
|-------------------|--|
| Target: | 14-3-3 zeta (YWHAZ) |
| Alternative Name: | YWHAZ (YWHAZ Products) |
| Background: | <p>Description: Adapter protein implicated in the regulation of a large spectrum of both general and specialized signaling pathways. Binds to a large number of partners, usually by recognition of a phosphoserine or phosphothreonine motif. Binding generally results in the modulation of the activity of the binding partner.</p> <p>Gene: YWHAZ</p> |
| Molecular Weight: | 28kDa |
| Gene ID: | 7534 |
| UniProt: | P63104 |
| Pathways: | Apoptosis , Hormone Transport , Myometrial Relaxation and Contraction , Regulation of Leukocyte Mediated Immunity , Positive Regulation of Immune Effector Process , Synaptic Membrane , Production of Molecular Mediator of Immune Response , Maintenance of Protein Location |

Application Details

| | |
|--------------------|---|
| Application Notes: | WB 1:500-1:2000, IHC 1:50-1:200, IF/ICC 1:100-1:500, ELISA(peptide) 1:20000-1:40000 |
| Restrictions: | For Research Use only |

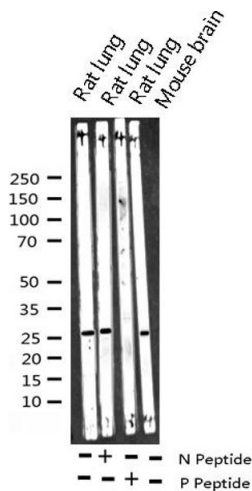
Handling

| | |
|--------------------|--|
| Format: | Liquid |
| Concentration: | 1 mg/mL |
| Buffer: | Rabbit IgG in phosphate buffered saline , pH 7.4, 150 mM NaCl, 0.02 % sodium azide and 50 % glycerol. |
| Preservative: | Sodium azide |
| Precaution of Use: | This product contains Sodium azide: a POISONOUS AND HAZARDOUS SUBSTANCE which should be handled by trained staff only. |
| Storage: | -20 °C |
| Storage Comment: | Store at -20 °C. Stable for 12 months from date of receipt. |
| Expiry Date: | 12 months |



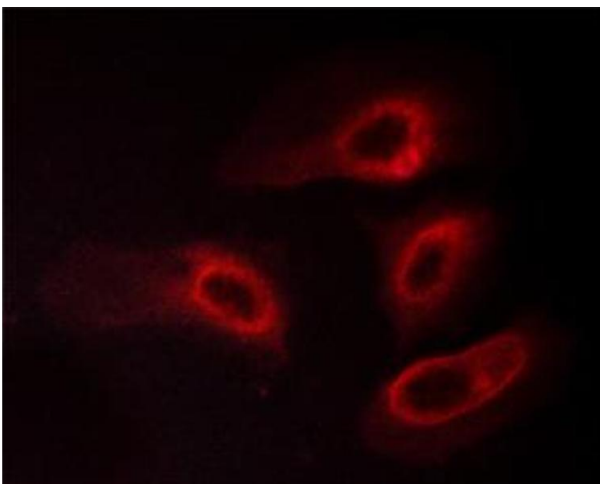
Western Blotting

Image 1. Western blot analysis of 14-3-3 zeta phosphorylation expression in UV treated NIH-3T3 whole cell lysates, The lane on the left is treated with the antigen-specific peptide.



Western Blotting

Image 2. Western blot analysis of Phospho-14-3-3 zeta (Ser58) expression in various lysates



Immunofluorescence (fixed cells)

Image 3. ABIN6267565 staining HeLa cells treated with PMA 125ng/ml 30' by ICC/IF. Cells were fixed with PFA and permeabilized in 0.1% saponin prior to blocking in 10% serum for 45 minutes at 37°C. The primary antibody was diluted 1/400 and incubated with the sample for 1 hour at 37°C. A Alexa Fluor 594 conjugated goat polyclonal to rabbit IgG (H+L), diluted 1/600 was used as secondary antibody.

Please check the [product details page](#) for more images. Overall 5 images are available for ABIN6256377.