

Datasheet for ABIN6256476
anti-MAP3K1 antibody (pThr1402)

3 Images

[Go to Product page](#)

Overview

Quantity:	100 µL
Target:	MAP3K1
Binding Specificity:	pThr1402
Reactivity:	Human, Mouse, Rat
Host:	Rabbit
Clonality:	Polyclonal
Conjugate:	This MAP3K1 antibody is un-conjugated
Application:	Western Blotting (WB), ELISA, Immunohistochemistry (IHC), Immunofluorescence (IF), Immunocytochemistry (ICC)

Product Details

Immunogen:	A synthesized peptide derived from human MEKK1 around the phosphorylation site of Thr1402.
Isotype:	IgG
Specificity:	Phospho-MEKK1 (Thr1402) Antibody detects endogenous levels of MEKK1 only when phosphorylated at Thr1400, which site historically referenced as Thr1402.
Purification:	The antibody is from purified rabbit serum by affinity purification via sequential chromatography on phospho- and non-phospho-peptide affinity columns.

Target Details

Target:	MAP3K1
Alternative Name:	MAP3K1 (MAP3K1 Products)

Target Details

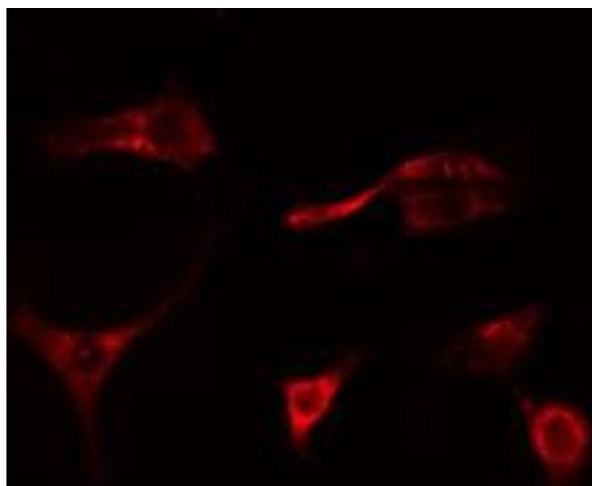
Background:	Description: Component of a protein kinase signal transduction cascade (PubMed:9808624). Activates the ERK and JNK kinase pathways by phosphorylation of MAP2K1 and MAP2K4 (PubMed:9808624). May phosphorylate the MAPK8/JNK1 kinase (PubMed:17761173). Activates CHUK and IKBKB, the central protein kinases of the NF-kappa-B pathway (PubMed:9808624). Gene: MAP3K1
Molecular Weight:	161 kDa
Gene ID:	4214
UniProt:	Q13233
Pathways:	MAPK Signaling , Interferon-gamma Pathway , Caspase Cascade in Apoptosis , TLR Signaling , Fc-epsilon Receptor Signaling Pathway , Activation of Innate immune Response , Regulation of Actin Filament Polymerization , Toll-Like Receptors Cascades

Application Details

Application Notes:	WB 1:1000-3000, IHC 1:200, IF/ICC 1:100-1:500, ELISA(peptide) 1:20000-1:40000
Restrictions:	For Research Use only

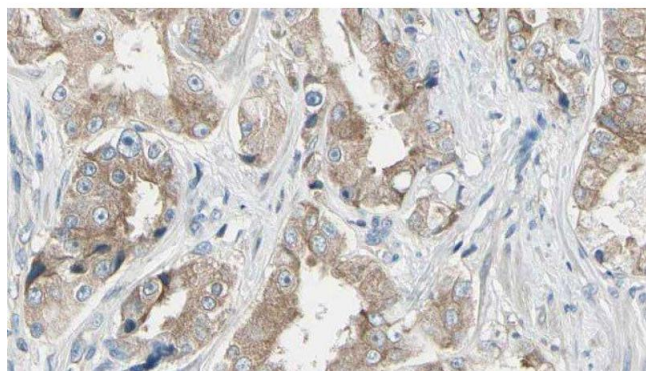
Handling

Format:	Liquid
Concentration:	1 mg/mL
Buffer:	Rabbit IgG in phosphate buffered saline , pH 7.4, 150 mM NaCl, 0.02 % sodium azide and 50 % glycerol.
Preservative:	Sodium azide
Precaution of Use:	This product contains Sodium azide: a POISONOUS AND HAZARDOUS SUBSTANCE which should be handled by trained staff only.
Storage:	-20 °C
Storage Comment:	Store at -20 °C. Stable for 12 months from date of receipt.
Expiry Date:	12 months



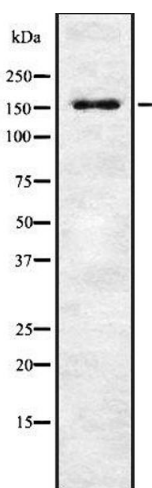
Immunofluorescence (fixed cells)

Image 1. ABIN6278655 staining Hela cells by IF/ICC. The sample were fixed with PFA and permeabilized in 0.1% Triton X-100, then blocked in 10% serum for 45 minutes at 25°C. The primary antibody was diluted at 1/200 and incubated with the sample for 1 hour at 37°C. An Alexa Fluor 594 conjugated goat anti-rabbit IgG (H+L) antibody (Cat.# S0006), diluted at 1/600, was used as secondary antibody



Immunohistochemistry

Image 2. ABIN6278655 at 1/100 staining Human prostate tissue by IHC-P. The sample was formaldehyde fixed and a heat mediated antigen retrieval step in citrate buffer was performed. The sample was then blocked and incubated with the antibody for 1.5 hours at 22°C. An HRP conjugated goat anti-rabbit antibody was used as the secondary



Western Blotting

Image 3. Western blot analysis of Phospho-MAP3K1 (Thr1402) using K562 whole cell lysates