

Datasheet for ABIN6256490
anti-OXSR1 antibody (pThr185)

3 Images

[Go to Product page](#)

Overview

Quantity:	100 µL
Target:	OXSR1
Binding Specificity:	pThr185
Reactivity:	Human, Mouse, Rat
Host:	Rabbit
Clonality:	Polyclonal
Conjugate:	This OXSR1 antibody is un-conjugated
Application:	Western Blotting (WB), ELISA, Immunohistochemistry (IHC), Immunofluorescence (IF), Immunocytochemistry (ICC)

Product Details

Immunogen:	A synthesized peptide derived from human OSR1 around the phosphorylation site of Thr185.
Isotype:	IgG
Specificity:	Phospho-OSR1 (Thr185) Antibody detects endogenous levels of OSR1 only when phosphorylated at Thr185.
Predicted Reactivity:	Pig,Bovine,Horse,Sheep,Dog
Purification:	The antibody is from purified rabbit serum by affinity purification via sequential chromatography on phospho- and non-phospho-peptide affinity columns.

Target Details

Target:	OXSR1
---------	-------

Target Details

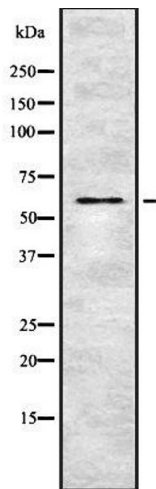
Alternative Name:	OXR1 (OXR1 Products)
Background:	Description: Regulates downstream kinases in response to environmental stress. May also have a function in regulating the actin cytoskeleton. Gene: OXR1
Molecular Weight:	58 kDa
Gene ID:	9943
UniProt:	O95747
Pathways:	Tube Formation

Application Details

Application Notes:	WB 1:1000-3000, IHC 1:200, IF/ICC 1:100-1:500, ELISA(peptide) 1:20000-1:40000
Restrictions:	For Research Use only

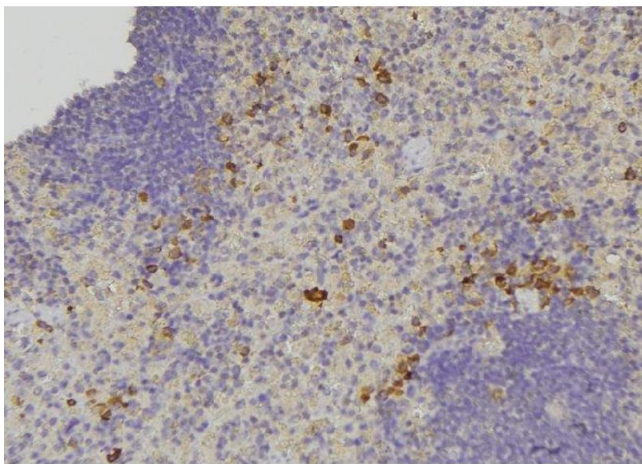
Handling

Format:	Liquid
Concentration:	1 mg/mL
Buffer:	Rabbit IgG in phosphate buffered saline , pH 7.4, 150 mM NaCl, 0.02 % sodium azide and 50 % glycerol.
Preservative:	Sodium azide
Precaution of Use:	This product contains Sodium azide: a POISONOUS AND HAZARDOUS SUBSTANCE which should be handled by trained staff only.
Storage:	-20 °C
Storage Comment:	Store at -20 °C. Stable for 12 months from date of receipt.
Expiry Date:	12 months



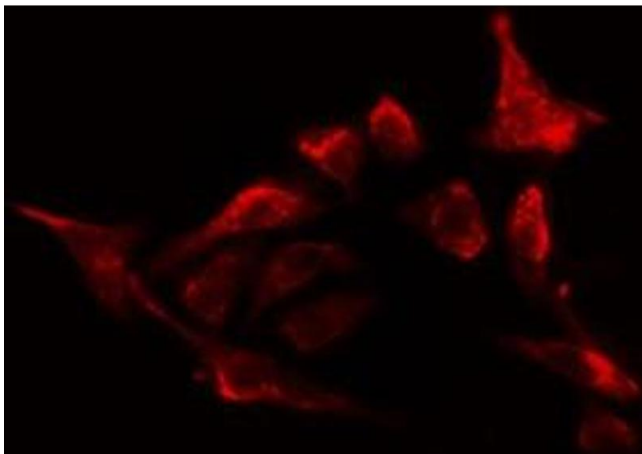
Western Blotting

Image 1. Western blot analysis of Phospho-OSR1 (Thr185) using K562 whole cell lysates



Immunohistochemistry

Image 2. ABIN6278656 at 1/100 staining Human lymph node tissue by IHC-P. The sample was formaldehyde fixed and a heat mediated antigen retrieval step in citrate buffer was performed. The sample was then blocked and incubated with the antibody for 1.5 hours at 22°C. An HRP conjugated goat anti-rabbit antibody was used as the secondary



Immunofluorescence (fixed cells)

Image 3. ABIN6278656 staining HepG2 cells by IF/ICC. The sample were fixed with PFA and permeabilized in 0.1% Triton X-100, then blocked in 10% serum for 45 minutes at 25°C. The primary antibody was diluted at 1/200 and incubated with the sample for 1 hour at 37°C. An Alexa Fluor 594 conjugated goat anti-rabbit IgG (H+L) antibody (Cat.# S0006), diluted at 1/600, was used as secondary antibody