

Datasheet for ABIN6256493  
**anti-CDKN1B antibody (pThr187)**[Go to Product page](#)

## 4 Images

## Overview

Quantity:	100 µL
Target:	CDKN1B
Binding Specificity:	pThr187
Reactivity:	Human, Mouse, Rat
Host:	Rabbit
Clonality:	Polyclonal
Conjugate:	This CDKN1B antibody is un-conjugated
Application:	Western Blotting (WB), ELISA, Immunohistochemistry (IHC), Immunofluorescence (IF), Immunocytochemistry (ICC)

## Product Details

Immunogen:	A synthesized peptide derived from human p27 Kip1 around the phosphorylation site of Thr187.
Isotype:	IgG
Specificity:	Phospho-p27 Kip1 (Thr187) Antibody detects endogenous levels of p27 Kip1 only when phosphorylated at Threonine 187.
Predicted Reactivity:	Bovine, Sheep, Rabbit, Dog, Chicken
Purification:	The antibody is from purified rabbit serum by affinity purification via sequential chromatography on phospho- and non-phospho-peptide affinity columns.

## Target Details

Target:	CDKN1B
---------	--------

## Target Details

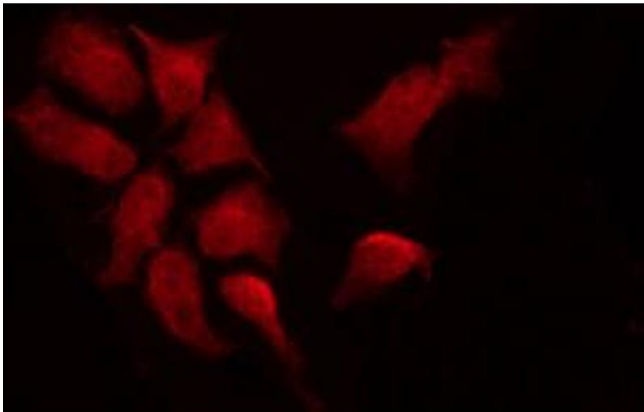
Alternative Name:	CDKN1B ( <a href="#">CDKN1B Products</a> )
Background:	<p>Description: Important regulator of cell cycle progression. Inhibits the kinase activity of CDK2 bound to cyclin A, but has little inhibitory activity on CDK2 bound to SPDYA (PubMed:28666995). Involved in G1 arrest. Potent inhibitor of cyclin E- and cyclin A-CDK2 complexes. Forms a complex with cyclin type D-CDK4 complexes and is involved in the assembly, stability, and modulation of CCND1-CDK4 complex activation. Acts either as an inhibitor or an activator of cyclin type D-CDK4 complexes depending on its phosphorylation state and/or stoichiometry.</p> <p>Gene: CDKN1B</p>
Molecular Weight:	27kDa
Gene ID:	1027
UniProt:	<a href="#">P46527</a>
Pathways:	<a href="#">Cell Division Cycle</a> , <a href="#">Fc-epsilon Receptor Signaling Pathway</a> , <a href="#">EGFR Signaling Pathway</a> , <a href="#">Neurotrophin Signaling Pathway</a> , <a href="#">Positive Regulation of Peptide Hormone Secretion</a> , <a href="#">Negative Regulation of Hormone Secretion</a> , <a href="#">Sensory Perception of Sound</a> , <a href="#">Mitotic G1-G1/S Phases</a> , <a href="#">DNA Replication</a> , <a href="#">Positive Regulation of Endopeptidase Activity</a> , <a href="#">Synthesis of DNA</a> , <a href="#">Autophagy</a>

## Application Details

Application Notes:	WB 1:500-1:2000, IHC 1:50-1:200, IF/ICC 1:100-1:500, ELISA(peptide) 1:20000-1:40000
Restrictions:	For Research Use only

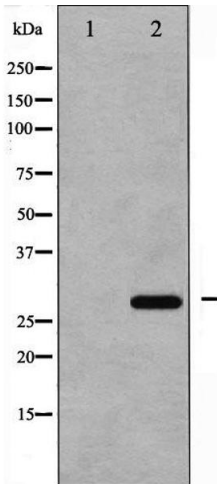
## Handling

Format:	Liquid
Concentration:	1 mg/mL
Buffer:	Rabbit IgG in phosphate buffered saline , pH 7.4, 150 mM NaCl, 0.02 % sodium azide and 50 % glycerol.
Preservative:	Sodium azide
Precaution of Use:	This product contains Sodium azide: a POISONOUS AND HAZARDOUS SUBSTANCE which should be handled by trained staff only.
Storage:	-20 °C
Storage Comment:	Store at -20 °C. Stable for 12 months from date of receipt.



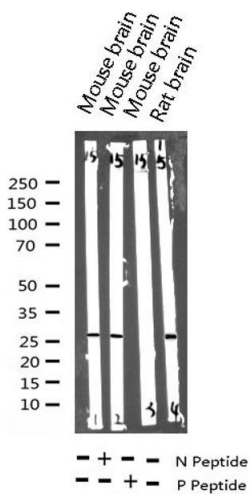
Immunofluorescence (fixed cells)

**Image 1.** ABIN6267533 staining A2780 by IF/ICC. The sample were fixed with PFA and permeabilized in 0.1% Triton X-100,then blocked in 10% serum for 45 minutes at 25°C. The primary antibody was diluted at 1/200 and incubated with the sample for 1 hour at 37°C. An Alexa Fluor 594 conjugated goat anti-rabbit IgG (H+L) Ab, diluted at 1/600, was used as the secondary antibody.



Western Blotting

**Image 2.** Western blot analysis of p27 Kip1 phosphorylation expression in EGF treated HeLa whole cell lysates,The lane on the left is treated with the antigen-specific peptide.



Western Blotting

**Image 3.** Western blot analysis of Phospho-p27 Kip1 (Thr187) expression in various lysates

Please check the [product details page](#) for more images. Overall 4 images are available for ABIN6256493.