

Datasheet for ABIN6256508
anti-MAPT antibody (pThr212)



[Go to Product page](#)

6 Images

Overview

Quantity:	100 µL
Target:	MAPT
Binding Specificity:	pThr212
Reactivity:	Human, Rat, Mouse
Host:	Rabbit
Clonality:	Polyclonal
Conjugate:	This MAPT antibody is un-conjugated
Application:	Western Blotting (WB), ELISA, Immunohistochemistry (IHC)

Product Details

Immunogen:	A synthesized peptide derived from human Tau around the phosphorylation site of Thr212.
Isotype:	IgG
Specificity:	Phospho-Tau (Thr212) Antibody detects endogenous levels of Tau only when phosphorylated at Thr529, which site historically referenced as Thr212.
Predicted Reactivity:	Pig,Bovine,Horse,Rabbit,Dog,Chicken
Purification:	The antibody is from purified rabbit serum by affinity purification via sequential chromatography on phospho- and non-phospho-peptide affinity columns.

Target Details

Target:	MAPT
---------	------

Target Details

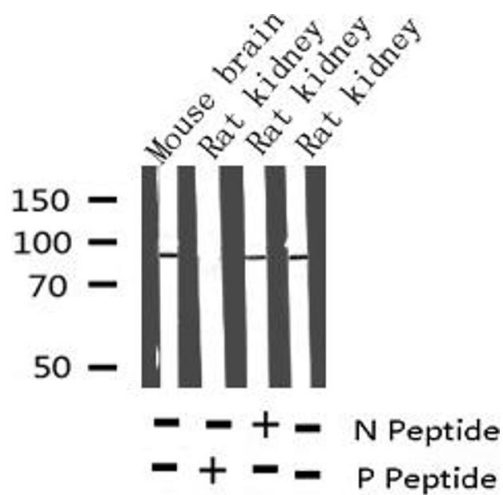
Alternative Name:	MAPT (MAPT Products)
Background:	<p>Description: Promotes microtubule assembly and stability, and might be involved in the establishment and maintenance of neuronal polarity. The C-terminus binds axonal microtubules while the N-terminus binds neural plasma membrane components, suggesting that tau functions as a linker protein between both. Axonal polarity is predetermined by TAU/MAPT localization (in the neuronal cell) in the domain of the cell body defined by the centrosome. The short isoforms allow plasticity of the cytoskeleton whereas the longer isoforms may preferentially play a role in its stabilization.</p> <p>Gene: MAPT</p>
Molecular Weight:	78 kDa
Gene ID:	4137
UniProt:	P10636
Pathways:	MAPK Signaling , Microtubule Dynamics , M Phase , Regulation of Cell Size

Application Details

Application Notes:	WB 1:500-2000, IHC 1:50-1:200, ELISA(peptide) 1:20000-1:40000
Restrictions:	For Research Use only

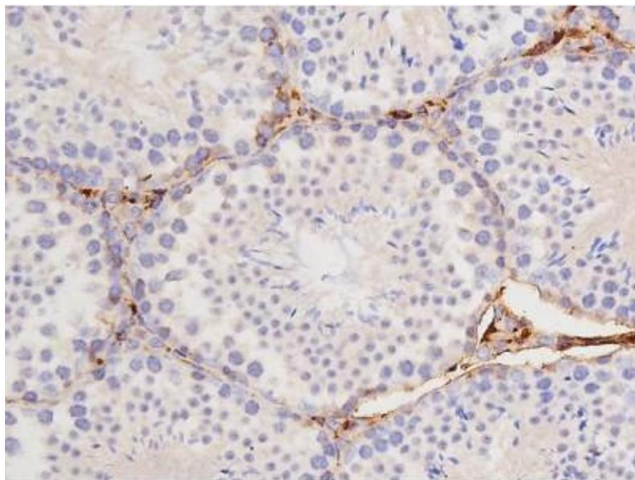
Handling

Format:	Liquid
Concentration:	1 mg/mL
Buffer:	Rabbit IgG in phosphate buffered saline , pH 7.4, 150 mM NaCl, 0.02 % sodium azide and 50 % glycerol.
Preservative:	Sodium azide
Precaution of Use:	This product contains Sodium azide: a POISONOUS AND HAZARDOUS SUBSTANCE which should be handled by trained staff only.
Storage:	-20 °C
Storage Comment:	Store at -20 °C. Stable for 12 months from date of receipt.
Expiry Date:	12 months



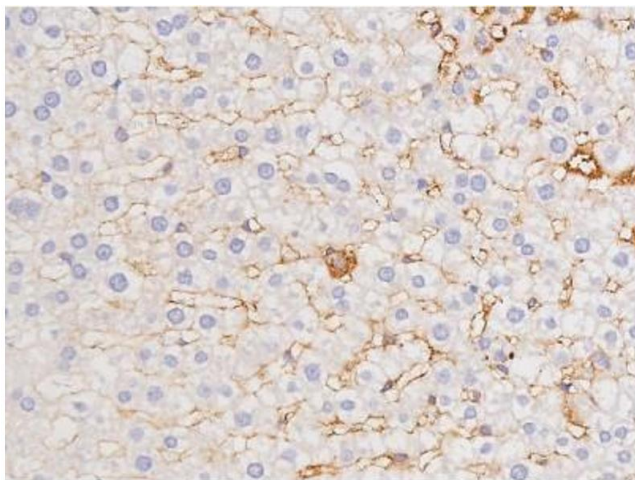
Western Blotting

Image 1. Western blot analysis of Phospho-Tau (Thr212) Antibody expression in mouse brain and rat kidney tissues lysates.



Immunohistochemistry

Image 2. ABIN6267358 at 1/200 staining Mouse testis tissue sections by IHC-P. The tissue was formaldehyde fixed and a heat mediated antigen retrieval step in citrate buffer was performed. The tissue was then blocked and incubated with the antibody for 1.5 hours at 22°C. An HRP conjugated goat anti-rabbit antibody was used as the secondary.



Immunohistochemistry

Image 3. ABIN6267358 at 1/200 staining Rat liver tissue sections by IHC-P. The tissue was formaldehyde fixed and a heat mediated antigen retrieval step in citrate buffer was performed. The tissue was then blocked and incubated with the antibody for 1.5 hours at 22°C. An HRP conjugated goat anti-rabbit antibody was used as the secondary.

Please check the [product details page](#) for more images. Overall 6 images are available for ABIN6256508.