



[Go to Product page](#)

## Datasheet for ABIN6256533 **anti-CAMK2B antibody (pThr286)**

### 5 Images

#### Overview

Quantity:	100 µL
Target:	CAMK2B
Binding Specificity:	pThr286
Reactivity:	Human, Mouse, Rat
Host:	Rabbit
Clonality:	Polyclonal
Conjugate:	This CAMK2B antibody is un-conjugated
Application:	Western Blotting (WB), ELISA, Immunohistochemistry (IHC), Immunofluorescence (IF), Immunocytochemistry (ICC)

#### Product Details

Immunogen:	A synthesized peptide derived from human CaMK2 around the phosphorylation site of Threonine 286
Isotype:	IgG
Specificity:	Phospho-CaMK2 (Thr286) Antibody detects endogenous levels of CaMK2 only when phosphorylated at Threonine 286
Cross-Reactivity:	Human, Mouse (Murine), Rat (Rattus)
Purification:	The antibody is from purified rabbit serum by affinity purification via sequential chromatography on phospho- and non-phospho-peptide affinity columns.

## Target Details

---

Target:	CAMK2B
Alternative Name:	CaMK2 ( <a href="#">CAMK2B Products</a> )
Background:	<p>Description: CaM-kinase II (CAMK2) is a prominent kinase in the central nervous system that may function in long-term potentiation and neurotransmitter release. Member of the NMDAR signaling complex in excitatory synapses it may regulate NMDAR-dependent potentiation of the AMPAR and synaptic plasticity (By similarity). Phosphorylates transcription factor FOXO3 on 'Ser-298' (PubMed:23805378). Activates FOXO3 transcriptional activity (By similarity).</p> <p>Gene: CAMK2A</p>
Molecular Weight:	50kDa
Gene ID:	815
UniProt:	<a href="#">Q9UQM7</a> , <a href="#">Q13557</a>
Pathways:	<a href="#">WNT Signaling</a> , <a href="#">Interferon-gamma Pathway</a> , <a href="#">Myometrial Relaxation and Contraction</a> , <a href="#">Regulation of G-Protein Coupled Receptor Protein Signaling</a> , <a href="#">Smooth Muscle Cell Migration</a> , <a href="#">Regulation of long-term Neuronal Synaptic Plasticity</a>

## Application Details

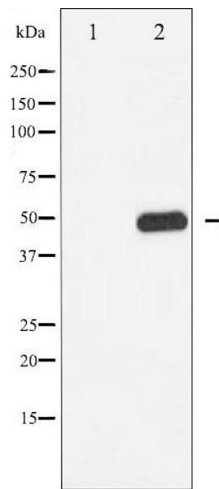
---

Application Notes:	WB 1:500-1:2000 IHC 1:50-1:200 IF/ICC 1:100-1:500
Restrictions:	For Research Use only

## Handling

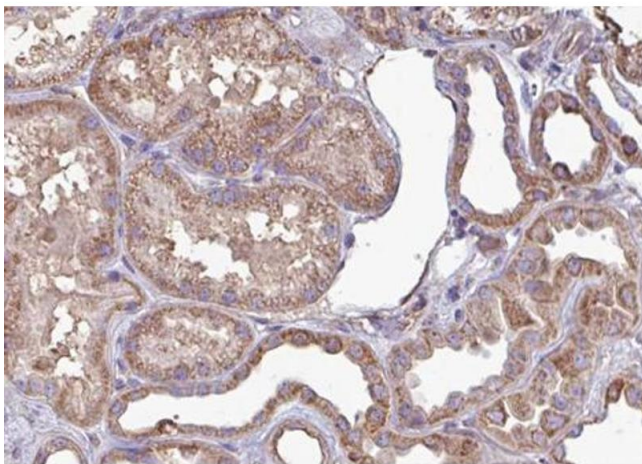
---

Format:	Liquid
Concentration:	1 mg/mL
Buffer:	Rabbit IgG in phosphate buffered saline , pH 7.4, 150 mM NaCl, 0.02 % sodium azide and 50 % glycerol.
Preservative:	Sodium azide
Precaution of Use:	This product contains Sodium azide: a POISONOUS AND HAZARDOUS SUBSTANCE which should be handled by trained staff only.
Storage:	-20 °C
Storage Comment:	Store at -20 °C.Stable for 12 months from date of receipt
Expiry Date:	12 months



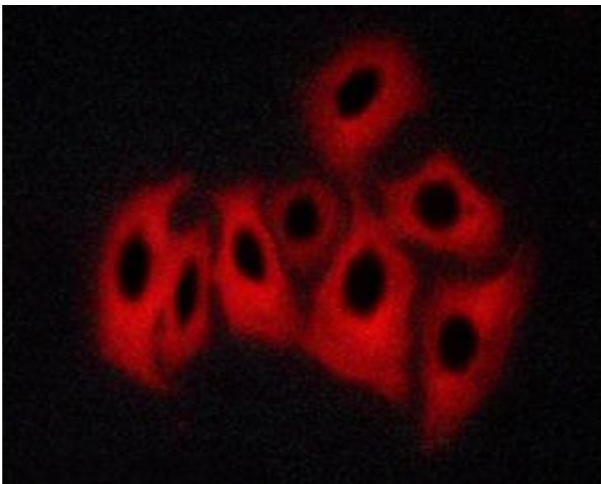
### Western Blotting

**Image 1.** Western blot analysis of CaMK2 phosphorylation expression in K562 whole cell lysates, The lane on the left is treated with the antigen-specific peptide.



### Immunohistochemistry

**Image 2.** ABIN6267702 at 1/100 staining human kidney carcinoma tissue sections by IHC-P. The tissue was formaldehyde fixed and a heat mediated antigen retrieval step in citrate buffer was performed. The tissue was then blocked and incubated with the antibody for 1.5 hours at 22°C. An HRP conjugated goat anti-rabbit antibody was used as the secondary.



### Immunofluorescence (fixed cells)

**Image 3.** ABIN6267702 staining MKN-45 cells treated with Forskolin 30 μM, 20 min by ICC/IF. Cells were fixed with PFA and permeabilized in 0.1% saponin prior to blocking in 10% serum for 45 minutes at 37°C. The primary antibody was diluted 1/400 and incubated with the sample for 1 hour at 37°C. A Alexa Fluor 594 conjugated goat polyclonal to rabbit IgG (H+L), diluted 1/600 was used as secondary antibody.

Please check the [product details page](#) for more images. Overall 5 images are available for ABIN6256533.