

Datasheet for ABIN6256550  
**anti-eIF4EBP1 antibody (pThr36)**

## 4 Images

[Go to Product page](#)

## Overview

Quantity:	100 µL
Target:	eIF4EBP1 (EIF4EBP1)
Binding Specificity:	pThr36
Reactivity:	Human, Mouse, Rat
Host:	Rabbit
Clonality:	Polyclonal
Conjugate:	This eIF4EBP1 antibody is un-conjugated
Application:	Western Blotting (WB), Immunohistochemistry (IHC), ELISA, Immunofluorescence (IF), Immunocytochemistry (ICC)

## Product Details

Immunogen:	A synthesized peptide derived from human 4E-BP1 around the phosphorylation site of Thr36.
Isotype:	IgG
Specificity:	Phospho-4E-BP1 (Thr36) Antibody detects endogenous levels of 4E-BP1 only when phosphorylated at Threonine 36.
Predicted Reactivity:	Pig,Zebrafish,Bovine,Horse,Sheep,Rabbit,Dog,Chicken
Purification:	The antibody is from purified rabbit serum by affinity purification via sequential chromatography on phospho- and non-phospho-peptide affinity columns.

## Target Details

Target:	eIF4EBP1 (EIF4EBP1)
---------	---------------------

## Target Details

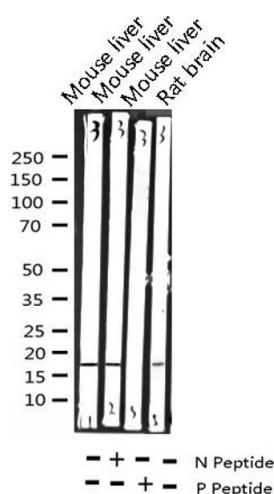
Alternative Name:	EIF4EBP1 ( <a href="#">EIF4EBP1 Products</a> )
Background:	<p>Description: Repressor of translation initiation that regulates EIF4E activity by preventing its assembly into the eIF4F complex: hypophosphorylated form competes with EIF4G1/EIF4G3 and strongly binds to EIF4E, leading to repress translation. In contrast, hyperphosphorylated form dissociates from EIF4E, allowing interaction between EIF4G1/EIF4G3 and EIF4E, leading to initiation of translation. Mediates the regulation of protein translation by hormones, growth factors and other stimuli that signal through the MAP kinase and mTORC1 pathways.</p> <p>Gene: EIF4EBP1</p>
Molecular Weight:	18kDa
Gene ID:	1978
UniProt:	<a href="#">Q13541</a>
Pathways:	<a href="#">MAPK Signaling</a> , <a href="#">PI3K-Akt Signaling</a> , <a href="#">RTK Signaling</a> , <a href="#">AMPK Signaling</a> , <a href="#">Regulation of Cell Size</a> , <a href="#">BCR Signaling</a>

## Application Details

Application Notes:	WB 1:500-1:2000, IHC 1:50-1:200, IF/ICC 1:100-1:500, ELISA(peptide) 1:20000-1:40000
Restrictions:	For Research Use only

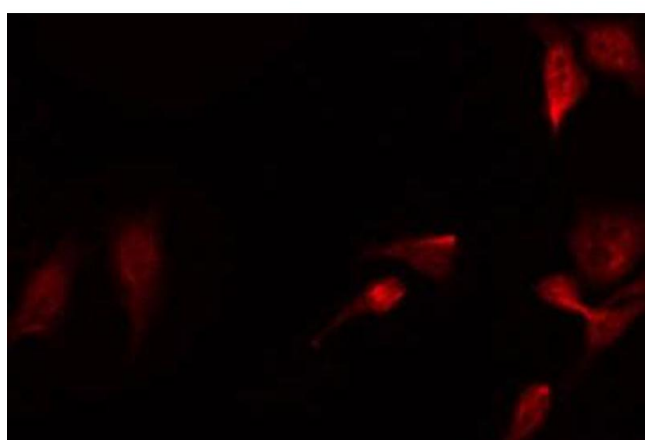
## Handling

Format:	Liquid
Concentration:	1 mg/mL
Buffer:	Rabbit IgG in phosphate buffered saline , pH 7.4, 150 mM NaCl, 0.02 % sodium azide and 50 % glycerol.
Preservative:	Sodium azide
Precaution of Use:	This product contains Sodium azide: a POISONOUS AND HAZARDOUS SUBSTANCE which should be handled by trained staff only.
Storage:	-20 °C
Storage Comment:	Store at -20 °C. Stable for 12 months from date of receipt.
Expiry Date:	12 months



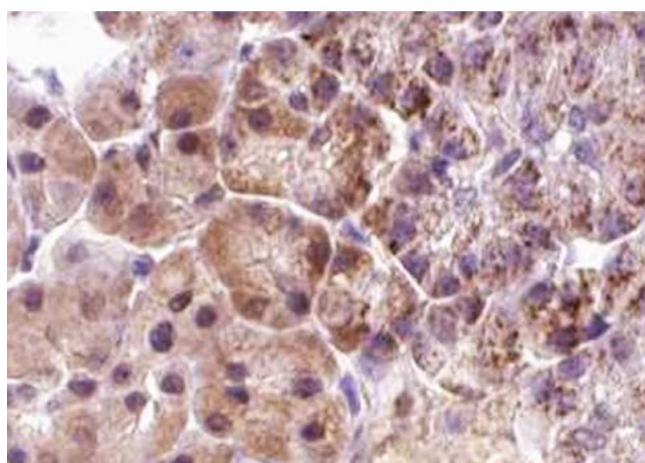
### Western Blotting

**Image 1.** Western blot analysis of Phospho-4E-BP1 (Thr36) expression in various lysates



### Immunofluorescence (fixed cells)

**Image 2.** ABIN6267640 staining Hela by IF/ICC. The sample were fixed with PFA and permeabilized in 0.1% Triton X-100, then blocked in 10% serum for 45 minutes at 25°C. The primary antibody was diluted at 1/200 and incubated with the sample for 1 hour at 37°C. An Alexa Fluor 594 conjugated goat anti-rabbit IgG (H+L) Ab, diluted at 1/600, was used as the secondary antibody.



### Immunohistochemistry

**Image 3.** ABIN6267640 at 1/100 staining human pancreas tissue sections by IHC-P. The tissue was formaldehyde fixed and a heat mediated antigen retrieval step in citrate buffer was performed. The tissue was then blocked and incubated with the antibody for 1.5 hours at 22°C. An HRP conjugated goat anti-rabbit antibody was used as the secondary.

Please check the [product details page](#) for more images. Overall 4 images are available for ABIN6256550.