

Datasheet for ABIN6256551
anti-CPI-17 antibody (pThr38)[Go to Product page](#)

4 Images

Overview

Quantity:	100 µL
Target:	CPI-17 (PPP1R14A)
Binding Specificity:	pThr38
Reactivity:	Human, Mouse, Rat
Host:	Rabbit
Clonality:	Polyclonal
Conjugate:	This CPI-17 antibody is un-conjugated
Application:	Western Blotting (WB), ELISA, Immunohistochemistry (IHC), Immunofluorescence (IF), Immunocytochemistry (ICC)

Product Details

Immunogen:	A synthesized peptide derived from human CPI17alpha around the phosphorylation site of Thr38.
Isotype:	IgG
Specificity:	Phospho-CPI17alpha (Thr38) Antibody detects endogenous levels of CPI17alpha only when phosphorylated at Threonine 38.
Predicted Reactivity:	Pig,Bovine,Sheep,Rabbit
Purification:	The antibody is from purified rabbit serum by affinity purification via sequential chromatography on phospho- and non-phospho-peptide affinity columns.

Target Details

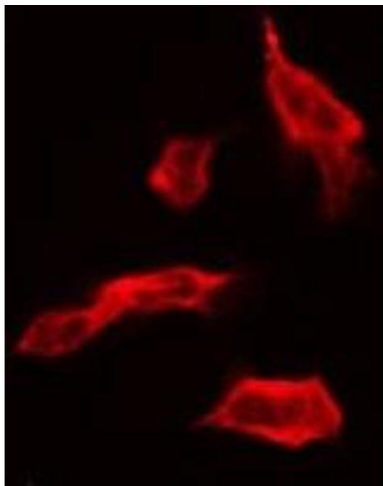
Target:	CPI-17 (PPP1R14A)
Alternative Name:	PPP1R14A (PPP1R14A Products)
Background:	Description: Inhibitor of PPP1CA. Has over 1000-fold higher inhibitory activity when phosphorylated, creating a molecular switch for regulating the phosphorylation status of PPP1CA substrates and smooth muscle contraction. Gene: PPP1R14A
Molecular Weight:	22kDa
Gene ID:	94274
UniProt:	Q96A00

Application Details

Application Notes:	WB 1:500-1:2000, IHC 1:50-1:200, IF/ICC 1:100-1:500, ELISA(peptide) 1:20000-1:40000
Restrictions:	For Research Use only

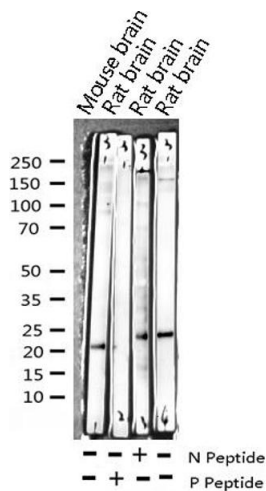
Handling

Format:	Liquid
Concentration:	1 mg/mL
Buffer:	Rabbit IgG in phosphate buffered saline , pH 7.4, 150 mM NaCl, 0.02 % sodium azide and 50 % glycerol.
Preservative:	Sodium azide
Precaution of Use:	This product contains Sodium azide: a POISONOUS AND HAZARDOUS SUBSTANCE which should be handled by trained staff only.
Storage:	-20 °C
Storage Comment:	Store at -20 °C. Stable for 12 months from date of receipt.
Expiry Date:	12 months



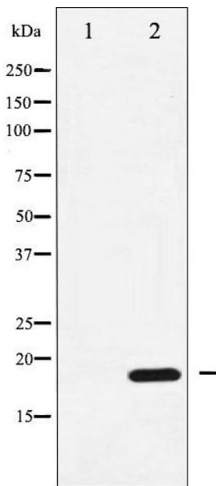
Immunofluorescence (fixed cells)

Image 1. ABIN6267682 staining HT29 by IF/ICC. The sample were fixed with PFA and permeabilized in 0.1% Triton X-100,then blocked in 10% serum for 45 minutes at 25°C. The primary antibody was diluted at 1/200 and incubated with the sample for 1 hour at 37°C. An Alexa Fluor 594 conjugated goat anti-rabbit IgG (H+L) Ab, diluted at 1/600, was used as the secondary antibody.



Western Blotting

Image 2. Western blot analysis of Phospho-CPI17 alpha (Thr38) expression in various lysates



Western Blotting

Image 3. Western blot analysis of CPI17 alpha phosphorylation expression in RAW264.7 whole cell lysates,The lane on the left is treated with the antigen-specific peptide.

Please check the [product details page](#) for more images. Overall 4 images are available for ABIN6256551.