

Datasheet for ABIN6256556
anti-MEK2 antibody (pThr394)



[Go to Product page](#)

3 Images

Overview

Quantity:	100 µL
Target:	MEK2 (MAP2K2)
Binding Specificity:	pThr394
Reactivity:	Human, Mouse, Rat
Host:	Rabbit
Clonality:	Polyclonal
Conjugate:	This MEK2 antibody is un-conjugated
Application:	Western Blotting (WB), Immunohistochemistry (IHC), ELISA, Immunoprecipitation (IP), Immunofluorescence (IF), Immunocytochemistry (ICC)

Product Details

Immunogen:	A synthesized peptide derived from human MEK2 around the phosphorylation site of Thr394.
Isotype:	IgG
Specificity:	Phospho-MEK2 (Thr394) Antibody detects endogenous levels of MEK2 only when phosphorylated at Threonine 394.
Predicted Reactivity:	Bovine, Sheep, Dog, Chicken
Purification:	The antibody is from purified rabbit serum by affinity purification via sequential chromatography on phospho- and non-phospho-peptide affinity columns.

Target Details

Target:	MEK2 (MAP2K2)
---------	---------------

Target Details

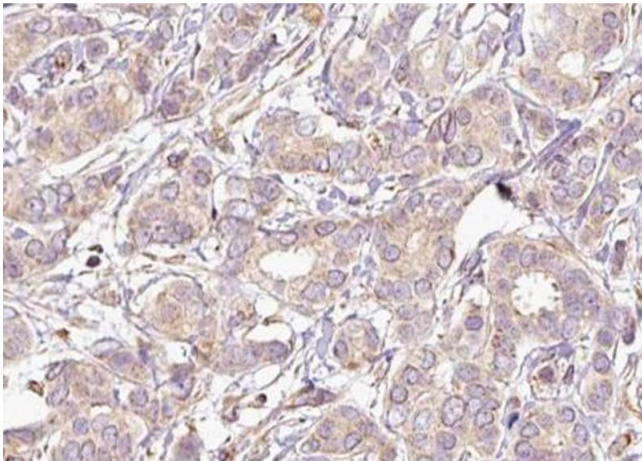
Alternative Name:	MAP2K2 (MAP2K2 Products)
Background:	Description: Catalyzes the concomitant phosphorylation of a threonine and a tyrosine residue in a Thr-Glu-Tyr sequence located in MAP kinases. Activates the ERK1 and ERK2 MAP kinases (By similarity). Gene: MAP2K2
Molecular Weight:	44kDa
Gene ID:	5605
UniProt:	P36507
Pathways:	MAPK Signaling , RTK Signaling , Fc-epsilon Receptor Signaling Pathway , Neurotrophin Signaling Pathway , Activation of Innate immune Response , Toll-Like Receptors Cascades , Signaling of Hepatocyte Growth Factor Receptor , BCR Signaling

Application Details

Application Notes:	WB 1:500-1:2000, IHC 1:50-1:200, IP, IF/ICC 1:100-1:500, ELISA(peptide) 1:20000-1:40000
Restrictions:	For Research Use only

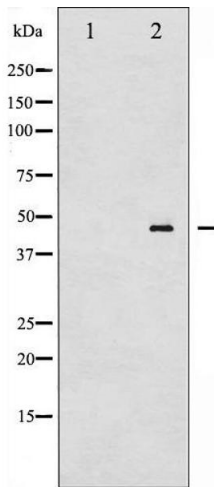
Handling

Format:	Liquid
Concentration:	1 mg/mL
Buffer:	Rabbit IgG in phosphate buffered saline , pH 7.4, 150 mM NaCl, 0.02 % sodium azide and 50 % glycerol.
Preservative:	Sodium azide
Precaution of Use:	This product contains Sodium azide: a POISONOUS AND HAZARDOUS SUBSTANCE which should be handled by trained staff only.
Storage:	-20 °C
Storage Comment:	Store at -20 °C. Stable for 12 months from date of receipt.
Expiry Date:	12 months



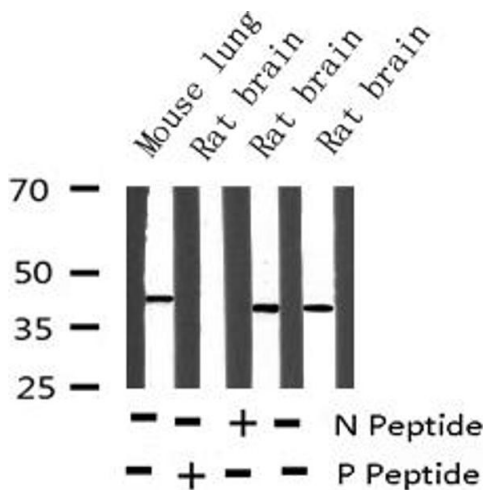
Immunohistochemistry

Image 1. ABIN6267493 at 1/100 staining human breast carcinoma tissue sections by IHC-P. The tissue was formaldehyde fixed and a heat mediated antigen retrieval step in citrate buffer was performed. The tissue was then blocked and incubated with the antibody for 1.5 hours at 22°C. An HRP conjugated goat anti-rabbit antibody was used as the secondary.



Western Blotting

Image 2. Western blot analysis of MEK2 phosphorylation expression in ovary cancer whole cell lysates, The lane on the left is treated with the antigen-specific peptide.



Western Blotting

Image 3. Western blot analysis of Phospho-MEK2 (Thr394) expression in various lysates