

Datasheet for ABIN6256557
anti-Cyclin E1 antibody (pThr395)



[Go to Product page](#)

2 Images

Overview

Quantity:	100 µL
Target:	Cyclin E1 (CCNE1)
Binding Specificity:	pThr395
Reactivity:	Human
Host:	Rabbit
Clonality:	Polyclonal
Conjugate:	This Cyclin E1 antibody is un-conjugated
Application:	Western Blotting (WB), Immunohistochemistry (IHC), ELISA, Immunofluorescence (IF), Immunocytochemistry (ICC)

Product Details

Immunogen:	A synthesized peptide derived from human Cyclin E1 around the phosphorylation site of Thr395.
Isotype:	IgG
Specificity:	Phospho-Cyclin E1 (Thr395) Antibody detects endogenous levels of Cyclin E1 only when phosphorylated at Threonine 395.
Predicted Reactivity:	Bovine,Horse,Sheep
Purification:	The antibody is from purified rabbit serum by affinity purification via sequential chromatography on phospho- and non-phospho-peptide affinity columns.

Target Details

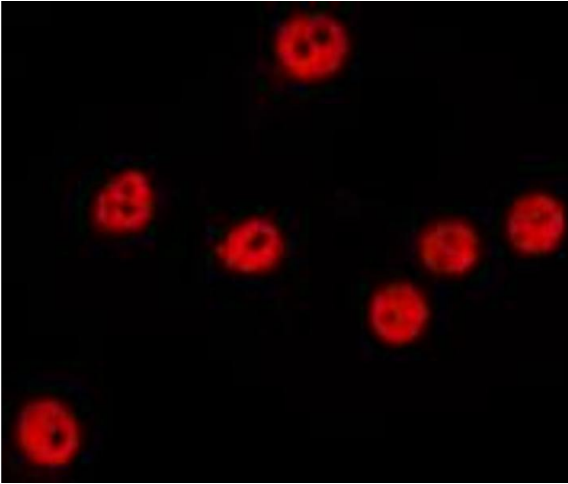
Target:	Cyclin E1 (CCNE1)
Alternative Name:	CCNE1 (CCNE1 Products)
Background:	Description: Essential for the control of the cell cycle at the G1/S (start) transition. Gene: CCNE1
Molecular Weight:	48kDa
Gene ID:	898
UniProt:	P24864
Pathways:	Cell Division Cycle , Intracellular Steroid Hormone Receptor Signaling Pathway , Nuclear Hormone Receptor Binding , Mitotic G1-G1/S Phases

Application Details

Application Notes:	WB 1:500-1:2000, IHC 1:50-1:200, IF/ICC 1:100-1:500, ELISA(peptide) 1:20000-1:40000
Restrictions:	For Research Use only

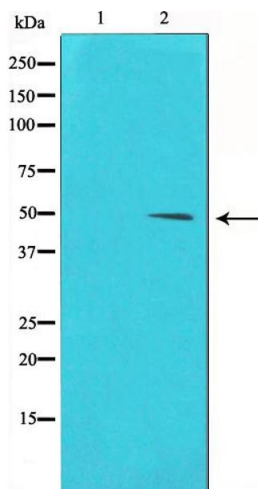
Handling

Format:	Liquid
Concentration:	1 mg/mL
Buffer:	Rabbit IgG in phosphate buffered saline , pH 7.4, 150 mM NaCl, 0.02 % sodium azide and 50 % glycerol.
Preservative:	Sodium azide
Precaution of Use:	This product contains Sodium azide: a POISONOUS AND HAZARDOUS SUBSTANCE which should be handled by trained staff only.
Storage:	-20 °C
Storage Comment:	Store at -20 °C. Stable for 12 months from date of receipt.
Expiry Date:	12 months



Immunofluorescence (fixed cells)

Image 1. ABIN6267446 staining MCF7 by IF/ICC. The sample were fixed with PFA and permeabilized in 0.1% Triton X-100, then blocked in 10% serum for 45 minutes at 25°C. The primary antibody was diluted at 1/200 and incubated with the sample for 1 hour at 37°C. An Alexa Fluor 594 conjugated goat anti-rabbit IgG (H+L) Ab, diluted at 1/600, was used as the secondary antibody.



Western Blotting

Image 2. Western blot analysis of Cyclin E1 phosphorylation expression in Paclitaxel treated HeLa whole cell lysates, The lane on the left is treated with the antigen-specific peptide.