

Datasheet for ABIN6256563  
**anti-E2F1 antibody (pThr433)**[Go to Product page](#)

## 3 Images

## Overview

Quantity:	100 µL
Target:	E2F1
Binding Specificity:	pThr433
Reactivity:	Human, Mouse
Host:	Rabbit
Clonality:	Polyclonal
Conjugate:	This E2F1 antibody is un-conjugated
Application:	Western Blotting (WB), ELISA, Immunofluorescence (IF), Immunocytochemistry (ICC)

## Product Details

Immunogen:	A synthesized peptide derived from human E2F1 around the phosphorylation site of Thr433.
Isotype:	IgG
Specificity:	Phospho-E2F1 (Thr433) Antibody detects endogenous levels of E2F1 only when phosphorylated at Threonine 433.
Predicted Reactivity:	Pig,Bovine,Horse,Rabbit,Chicken
Purification:	The antibody is from purified rabbit serum by affinity purification via sequential chromatography on phospho- and non-phospho-peptide affinity columns.

## Target Details

Target:	E2F1
---------	------

## Target Details

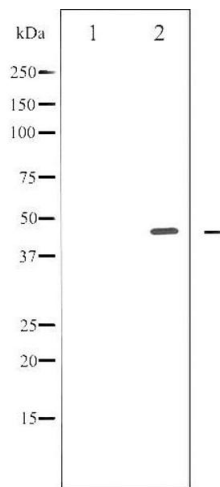
Alternative Name:	E2F1 ( <a href="#">E2F1 Products</a> )
Background:	<p>Description: Transcription activator that binds DNA cooperatively with DP proteins through the E2 recognition site, 5'-TTTC[CG]CGC-3' found in the promoter region of a number of genes whose products are involved in cell cycle regulation or in DNA replication. The DRTF1/E2F complex functions in the control of cell-cycle progression from G1 to S phase. E2F1 binds preferentially RB1 in a cell-cycle dependent manner. It can mediate both cell proliferation and TP53/p53-dependent apoptosis. Blocks adipocyte differentiation by binding to specific promoters repressing CEBPA binding to its target gene promoters (PubMed:20176812). Positively regulates transcription of RRP1B (PubMed:20040599).</p> <p>Gene: E2F1</p>
Molecular Weight:	47kDa
Gene ID:	1869
UniProt:	<a href="#">Q01094</a>
Pathways:	<a href="#">p53 Signaling</a> , <a href="#">Cell Division Cycle</a> , <a href="#">Mitotic G1-G1/S Phases</a> , <a href="#">DNA Replication</a> , <a href="#">M Phase</a> , <a href="#">Autophagy</a>

## Application Details

Application Notes:	WB 1:500-1:2000, IF/ICC 1:100-1:500, ELISA(peptide) 1:20000-1:40000
Restrictions:	For Research Use only

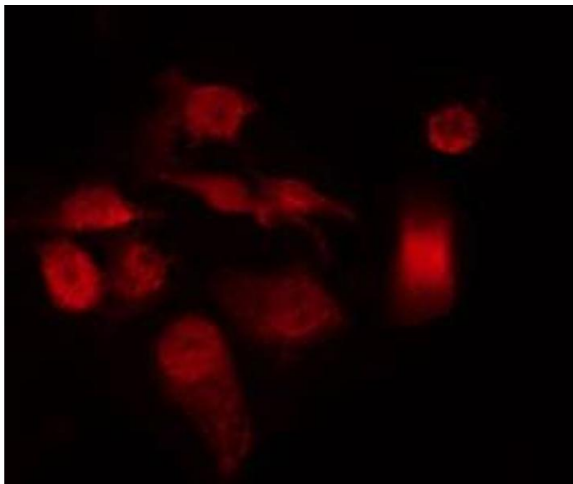
## Handling

Format:	Liquid
Concentration:	1 mg/mL
Buffer:	Rabbit IgG in phosphate buffered saline , pH 7.4, 150 mM NaCl, 0.02 % sodium azide and 50 % glycerol.
Preservative:	Sodium azide
Precaution of Use:	This product contains Sodium azide: a POISONOUS AND HAZARDOUS SUBSTANCE which should be handled by trained staff only.
Storage:	-20 °C
Storage Comment:	Store at -20 °C. Stable for 12 months from date of receipt.



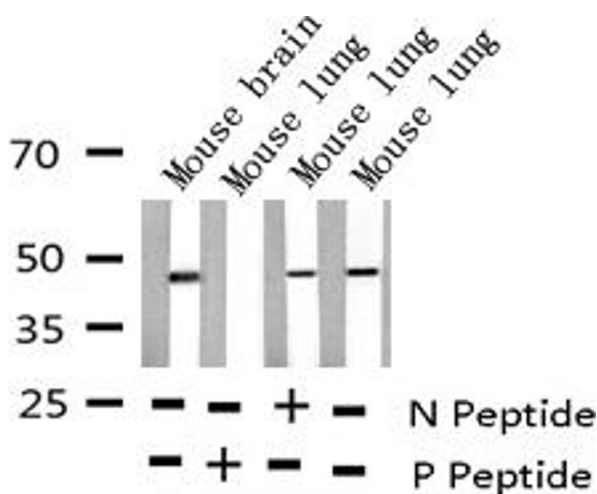
Western Blotting

**Image 1.** Western blot analysis of E2F1 phosphorylation expression in Etoposide treated HeLa whole cell lysates, The lane on the left is treated with the antigen-specific peptide.



Immunofluorescence (fixed cells)

**Image 2.** ABIN6267586 staining HeLa by IF/ICC. The sample were fixed with PFA and permeabilized in 0.1% Triton X-100, then blocked in 10% serum for 45 minutes at 25°C. The primary antibody was diluted at 1/200 and incubated with the sample for 1 hour at 37°C. An Alexa Fluor 594 conjugated goat anti-rabbit IgG (H+L) Ab, diluted at 1/600, was used as the secondary antibody.



Western Blotting

**Image 3.** Western blot analysis of Phospho-E2F1 (Thr433) expression in various lysates