

Datasheet for ABIN6256580  
**anti-Ezrin antibody (pThr567)**

## 3 Images

[Go to Product page](#)

## Overview

Quantity:	100 µL
Target:	Ezrin (EZR)
Binding Specificity:	pThr567
Reactivity:	Human, Mouse, Rat
Host:	Rabbit
Clonality:	Polyclonal
Conjugate:	This Ezrin antibody is un-conjugated
Application:	Western Blotting (WB), ELISA, Immunofluorescence (IF), Immunocytochemistry (ICC)

## Product Details

Immunogen:	A synthesized peptide derived from human Ezrin around the phosphorylation site of Thr567.
Isotype:	IgG
Specificity:	Phospho-Ezrin (Thr567) Antibody detects endogenous levels of Ezrin only when phosphorylated at Threonine 567.
Predicted Reactivity:	Pig,Bovine,Horse,Rabbit,Dog,Chicken,Xenopus
Purification:	The antibody is from purified rabbit serum by affinity purification via sequential chromatography on phospho- and non-phospho-peptide affinity columns.

## Target Details

Target:	Ezrin (EZR)
---------	-------------

## Target Details

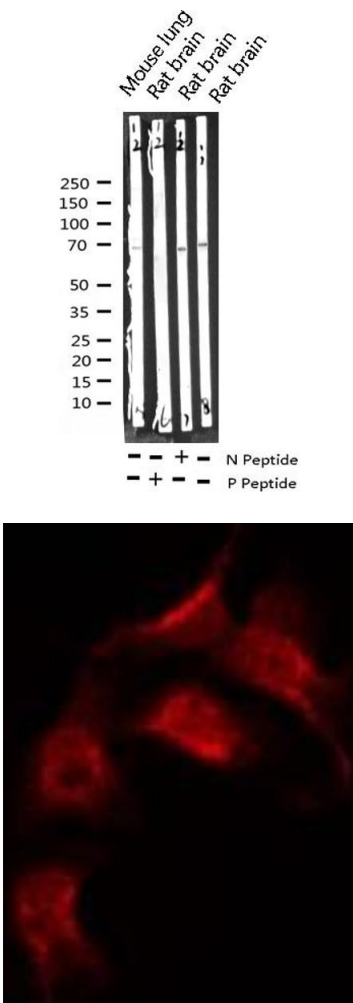
Alternative Name:	EZR ( <a href="#">EZR Products</a> )
Background:	Description: Probably involved in connections of major cytoskeletal structures to the plasma membrane. In epithelial cells, required for the formation of microvilli and membrane ruffles on the apical pole. Along with PLEKHG6, required for normal macropinocytosis. Gene: EZR
Molecular Weight:	69kDa
Gene ID:	7430
UniProt:	<a href="#">P15311</a>
Pathways:	<a href="#">Maintenance of Protein Location</a>

## Application Details

Application Notes:	WB 1:500-1:2000, IF/ICC 1:100-1:500, ELISA(peptide) 1:20000-1:40000
Restrictions:	For Research Use only

## Handling

Format:	Liquid
Concentration:	1 mg/mL
Buffer:	Rabbit IgG in phosphate buffered saline , pH 7.4, 150 mM NaCl, 0.02 % sodium azide and 50 % glycerol.
Preservative:	Sodium azide
Precaution of Use:	This product contains Sodium azide: a POISONOUS AND HAZARDOUS SUBSTANCE which should be handled by trained staff only.
Storage:	-20 °C
Storage Comment:	Store at -20 °C. Stable for 12 months from date of receipt.
Expiry Date:	12 months

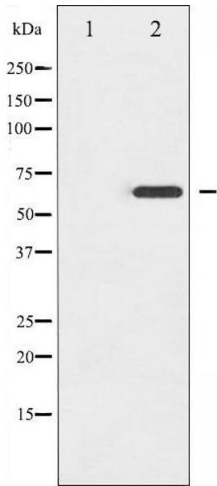


Western Blotting

**Image 1.** Western blot analysis of Phospho-Ezrin (Thr566) expression in various lysates

Immunofluorescence (fixed cells)

**Image 2.** ABIN6267383 staining 293 by IF/ICC. The sample were fixed with PFA and permeabilized in 0.1% Triton X-100,then blocked in 10% serum for 45 minutes at 25°C. The primary antibody was diluted at 1/200 and incubated with the sample for 1 hour at 37°C. An Alexa Fluor 594 conjugated goat anti-rabbit IgG (H+L) Ab, diluted at 1/600, was used as the secondary antibody.



Western Blotting

**Image 3.** Western blot analysis of Ezrin phosphorylation expression in EGF treated A431 whole cell lysates,The lane on the left is treated with the antigen-specific peptide.