

Datasheet for ABIN6256588  
**anti-BRAF antibody (pThr599)**[Go to Product page](#)

## 3 Images

## Overview

|                      |  |
|----------------------|--|
| Quantity:            | 100 µL   |
| Target:              | BRAF   |
| Binding Specificity: | pThr599  |
| Reactivity:          | Human, Mouse, Rat  |
| Host:                | Rabbit   |
| Clonality:           | Polyclonal   |
| Conjugate:           | This BRAF antibody is un-conjugated  |
| Application:         | Western Blotting (WB), ELISA, Immunohistochemistry (IHC), Immunofluorescence (IF), Immunocytochemistry (ICC) |

## Product Details

|                       |   |
|-----------------------|---|
| Immunogen:            | A synthesized peptide derived from human B Raf around the phosphorylation site of Thr599.   |
| Isotype:              | IgG   |
| Specificity:          | Phospho-B Raf (Thr599) Antibody detects endogenous levels of B Raf only when phosphorylated at Threonine 599.   |
| Predicted Reactivity: | Pig,Zebrafish,Bovine,Horse,Sheep,Rabbit,Dog,Chicken,Xenopus   |
| Purification:         | The antibody is from purified rabbit serum by affinity purification via sequential chromatography on phospho- and non-phospho-peptide affinity columns. |

## Target Details

|         |      |
|---------|------|
| Target: | BRAF |
|---------|------|

## Target Details

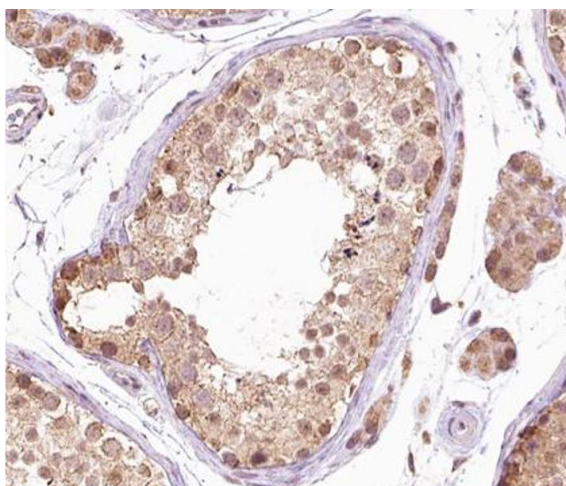
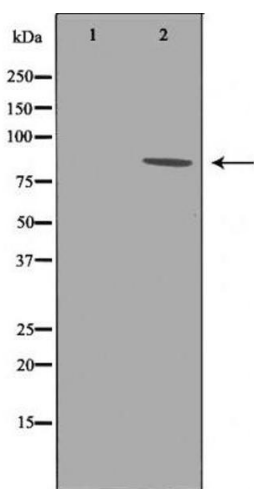
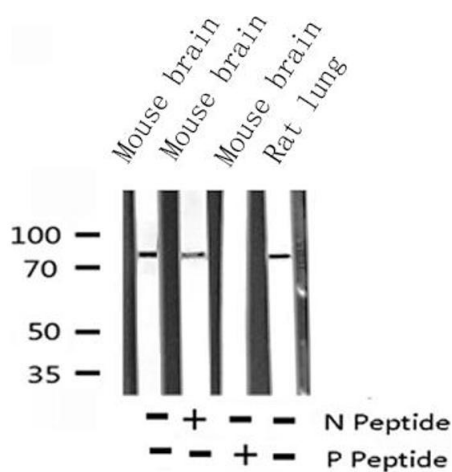
|                   |  |
|-------------------|--|
| Alternative Name: | BRAF ( <a href="#">BRAF Products</a> )   |
| Background:       | <p>Description: Protein kinase involved in the transduction of mitogenic signals from the cell membrane to the nucleus. May play a role in the postsynaptic responses of hippocampal neuron. Phosphorylates MAP2K1, and thereby contributes to the MAP kinase signal transduction pathway.</p> <p>Gene: BRAF</p> |
| Molecular Weight: | 85kDa  |
| Gene ID:          | 673  |
| UniProt:          | <a href="#">P15056</a>   |
| Pathways:         | <a href="#">MAPK Signaling</a> , <a href="#">RTK Signaling</a> , <a href="#">Neurotrophin Signaling Pathway</a> , <a href="#">Ribonucleoprotein Complex Subunit Organization</a> , <a href="#">Hepatitis C</a> , <a href="#">Autophagy</a>   |

## Application Details

|                    |   |
|--------------------|---|
| Application Notes: | IHC 1:50-1:200, WB 1:500-2000, IF/ICC 1:100-1:500, ELISA(peptide) 1:20000-1:40000 |
| Restrictions:      | For Research Use only   |

## Handling

|                    |  |
|--------------------|--|
| Format:            | Liquid   |
| Concentration:     | 1 mg/mL  |
| Buffer:            | Rabbit IgG in phosphate buffered saline , pH 7.4, 150 mM NaCl, 0.02 % sodium azide and 50 % glycerol.                  |
| Preservative:      | Sodium azide   |
| Precaution of Use: | This product contains Sodium azide: a POISONOUS AND HAZARDOUS SUBSTANCE which should be handled by trained staff only. |
| Storage:           | -20 °C   |
| Storage Comment:   | Store at -20 °C. Stable for 12 months from date of receipt.  |
| Expiry Date:       | 12 months  |



### Western Blotting

**Image 1.** Western blot analysis of Phospho-B-Raf (Thr599) expression in various lysates

### Western Blotting

**Image 2.** Western blot analysis of B-Raf phosphorylation expression in whole cell lysates, The lane on the left is treated with the antigen-specific peptide.

### Immunohistochemistry

**Image 3.** ABIN6267381 at 1/200 staining human testis tissue sections by IHC-P. The tissue was formaldehyde fixed and a heat mediated antigen retrieval step in citrate buffer was performed. The tissue was then blocked and incubated with the antibody for 1.5 hours at 22° C. An HRP conjugated goat anti-rabbit antibody was used as the secondary.