

Datasheet for ABIN6256604
anti-C-JUN antibody (pThr91)



[Go to Product page](#)

11 Images

Overview

Quantity:	100 µL
Target:	C-JUN (JUN)
Binding Specificity:	pThr91
Reactivity:	Human, Mouse, Rat
Host:	Rabbit
Clonality:	Polyclonal
Conjugate:	This C-JUN antibody is un-conjugated
Application:	Western Blotting (WB), Immunohistochemistry (IHC), ELISA, Immunofluorescence (IF), Immunocytochemistry (ICC)

Product Details

Immunogen:	A synthesized peptide derived from human c-Jun around the phosphorylation site of Thr91.
Isotype:	IgG
Specificity:	Phospho-c-Jun (Thr91) Antibody detects endogenous levels of c-Jun only when phosphorylated at Threonine 91.
Predicted Reactivity:	Pig,Bovine,Sheep,Rabbit,Dog
Purification:	The antibody is from purified rabbit serum by affinity purification via sequential chromatography on phospho- and non-phospho-peptide affinity columns.

Target Details

Target:	C-JUN (JUN)
---------	-------------

Target Details

Alternative Name:	JUN (JUN Products)
Background:	<p>Description: Transcription factor that recognizes and binds to the enhancer heptamer motif 5'-TGA[CG]TCA-3'. Promotes activity of NR5A1 when phosphorylated by HIPK3 leading to increased steroidogenic gene expression upon cAMP signaling pathway stimulation. Involved in activated KRAS-mediated transcriptional activation of USP28 in colorectal cancer (CRC) cells (PubMed:24623306). Binds to the USP28 promoter in colorectal cancer (CRC) cells (PubMed:24623306).</p> <p>Gene: JUN</p>
Molecular Weight:	37kDa
Gene ID:	3725
UniProt:	P05412
Pathways:	MAPK Signaling , RTK Signaling , WNT Signaling , Fc-epsilon Receptor Signaling Pathway , Activation of Innate immune Response , Myometrial Relaxation and Contraction , Skeletal Muscle Fiber Development , Protein targeting to Nucleus , Toll-Like Receptors Cascades , Autophagy , Signaling of Hepatocyte Growth Factor Receptor , BCR Signaling , S100 Proteins

Application Details

Application Notes:	WB 1:500-1:2000, IHC 1:50-1:500, IF/ICC 1:100-1:500, ELISA(peptide) 1:20000-1:40000
Restrictions:	For Research Use only

Handling

Format:	Liquid
Concentration:	1 mg/mL
Buffer:	Rabbit IgG in phosphate buffered saline , pH 7.4, 150 mM NaCl, 0.02 % sodium azide and 50 % glycerol.
Preservative:	Sodium azide
Precaution of Use:	This product contains Sodium azide: a POISONOUS AND HAZARDOUS SUBSTANCE which should be handled by trained staff only.
Storage:	-20 °C
Storage Comment:	Store at -20 °C. Stable for 12 months from date of receipt.

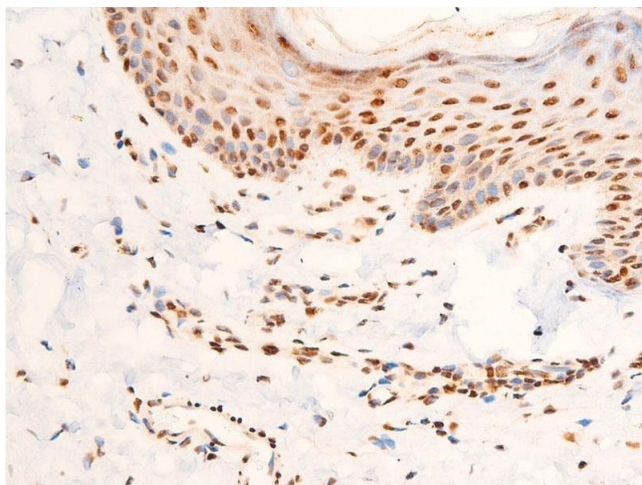
**Immunohistochemistry**

Image 1. ABIN6267306 at 1/100 staining human skin tissue sections by IHC-P. The tissue was formaldehyde fixed and a heat mediated antigen retrieval step in citrate buffer was performed. The tissue was then blocked and incubated with the antibody for 1.5 hours at 22°C. An HRP conjugated goat anti-rabbit antibody was used as the secondary.

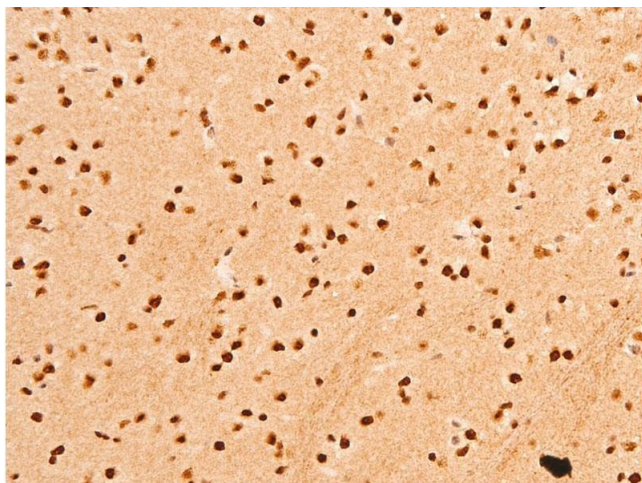
**Immunohistochemistry**

Image 2. ABIN6267306 at 1/100 staining rat brain tissue sections by IHC-P. The tissue was formaldehyde fixed and a heat mediated antigen retrieval step in citrate buffer was performed. The tissue was then blocked and incubated with the antibody for 1.5 hours at 22°C. An HRP conjugated goat anti-rabbit antibody was used as the secondary.

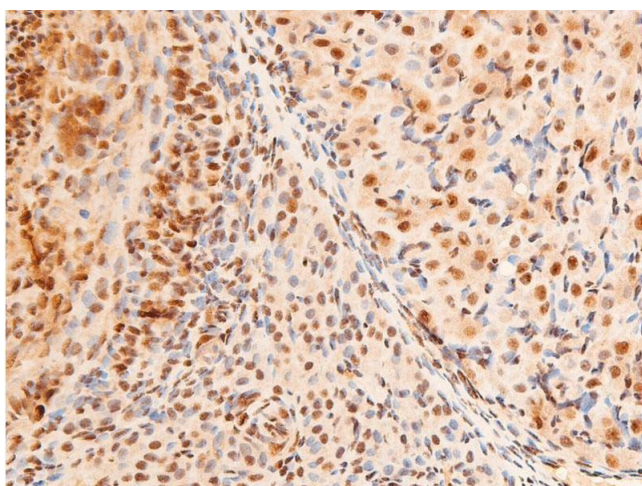
**Immunohistochemistry**

Image 3. ABIN6267306 at 1/100 staining rat ovarian tissue sections by IHC-P. The tissue was formaldehyde fixed and a heat mediated antigen retrieval step in citrate buffer was performed. The tissue was then blocked and incubated with the antibody for 1.5 hours at 22°C. An HRP conjugated goat anti-rabbit antibody was used as the secondary.

Please check the [product details page](#) for more images. Overall 11 images are available for ABIN6256604.