

Datasheet for ABIN6256617  
**anti-GRLF1 antibody (pTyr1105)**[Go to Product page](#)

## 4 Images

## Overview

Quantity:	100 µL
Target:	GRLF1
Binding Specificity:	pTyr1105
Reactivity:	Human, Mouse, Rat
Host:	Rabbit
Clonality:	Polyclonal
Conjugate:	This GRLF1 antibody is un-conjugated
Application:	Western Blotting (WB), ELISA, Immunohistochemistry (IHC), Immunocytochemistry (ICC), Immunofluorescence (IF)

## Product Details

Immunogen:	A synthesized peptide derived from human GRF-1 around the phosphorylation site of Tyr1105.
Isotype:	IgG
Specificity:	Phospho-GRF-1 (Tyr1105) Antibody detects endogenous levels of GRF-1 only when phosphorylated at Tyrosine 1105.
Predicted Reactivity:	Pig,Bovine,Horse,Sheep,Rabbit,Dog,Chicken,Xenopus
Purification:	The antibody is from purified rabbit serum by affinity purification via sequential chromatography on phospho- and non-phospho-peptide affinity columns.

## Target Details

Target:	GRLF1
---------	-------

## Target Details

Alternative Name: ARHGAP35 ([GRLF1 Products](#))

Background: Description: Rho GTPase-activating protein (GAP) (PubMed:19673492, PubMed:28894085). Binds several acidic phospholipids which inhibits the Rho GAP activity to promote the Rac GAP activity (PubMed:19673492). This binding is inhibited by phosphorylation by PRKCA (PubMed:19673492). Involved in cell differentiation as well as cell adhesion and migration, plays an important role in retinal tissue morphogenesis, neural tube fusion, midline fusion of the cerebral hemispheres and mammary gland branching morphogenesis (By similarity). Transduces signals from p21-ras to the nucleus, acting via the ras GTPase-activating protein (GAP) (By similarity). Transduces SRC-dependent signals from cell-surface adhesion molecules, such as laminin, to promote neurite outgrowth. Regulates axon outgrowth, guidance and fasciculation (By similarity). Modulates Rho GTPase-dependent F-actin polymerization, organization and assembly, is involved in polarized cell migration and in the positive regulation of ciliogenesis and cilia elongation (By similarity). During mammary gland development, is required in both the epithelial and stromal compartments for ductal outgrowth (By similarity). Represses transcription of the glucocorticoid receptor by binding to the cis-acting regulatory sequence 5'-GAGAAAAGAACTGGAGAACTC-3', this function is however unclear and would need additional experimental evidences (PubMed:1894621).

Gene: ARHGAP35

Molecular Weight: 155kDa

Gene ID: 2909

UniProt: [Q9NRY4](#)

Pathways: [Tube Formation](#)

## Application Details

Application Notes: WB 1:500-1:2000, IHC 1:50-1:200, IF/ICC 1:100-1:500, ELISA(peptide) 1:20000-1:40000

Restrictions: For Research Use only

## Handling

Format: Liquid

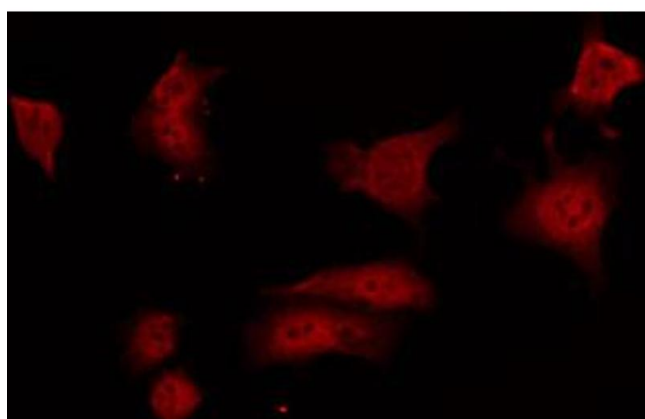
Concentration: 1 mg/mL

Buffer: Rabbit IgG in phosphate buffered saline , pH 7.4, 150 mM NaCl, 0.02 % sodium azide and 50 % glycerol.

## Handling

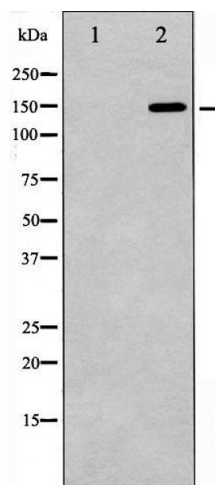
Preservative:	Sodium azide
Precaution of Use:	This product contains Sodium azide: a POISONOUS AND HAZARDOUS SUBSTANCE which should be handled by trained staff only.
Storage:	-20 °C
Storage Comment:	Store at -20 °C. Stable for 12 months from date of receipt.
Expiry Date:	12 months

## Images



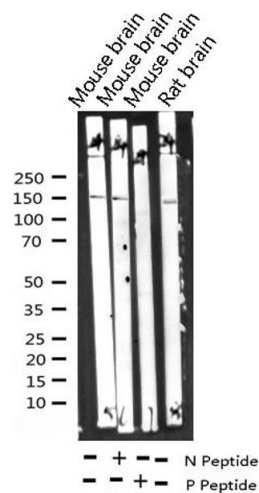
### Immunofluorescence (fixed cells)

**Image 1.** ABIN6267693 staining 293 by IF/ICC. The sample were fixed with PFA and permeabilized in 0.1% Triton X-100, then blocked in 10% serum for 45 minutes at 25°C. The primary antibody was diluted at 1/200 and incubated with the sample for 1 hour at 37°C. An Alexa Fluor 594 conjugated goat anti-rabbit IgG (H+L) Ab, diluted at 1/600, was used as the secondary antibody.



### Western Blotting

**Image 2.** Western blot analysis of GRF-1 phosphorylation expression in EGF treated 293 whole cell lysates, The lane on the left is treated with the antigen-specific peptide.



Western Blotting

**Image 3.** Western blot analysis of Phospho-GRF-1 (Tyr1105) expression in various lysates

Please check the [product details page](#) for more images. Overall 4 images are available for ABIN6256617.