

Datasheet for ABIN6256630

anti-ErbB2/Her2 antibody (pTyr1248)

12 Images

[Go to Product page](#)

Overview

Quantity:	100 µL
Target:	ErbB2/Her2
Binding Specificity:	pTyr1248
Reactivity:	Human, Mouse, Rat
Host:	Rabbit
Clonality:	Polyclonal
Conjugate:	This ErbB2/Her2 antibody is un-conjugated
Application:	Western Blotting (WB), ELISA, Immunohistochemistry (IHC), Immunofluorescence (IF), Immunocytochemistry (ICC)

Product Details

Immunogen:	A synthesized peptide derived from human HER2/ErbB2 around the phosphorylation site of Tyr1248.
Isotype:	IgG
Specificity:	Phospho-HER2/ErbB2 (Tyr1248) Antibody detects endogenous levels of HER2/ErbB2 only when phosphorylated at Tyrosine 1248.
Predicted Reactivity:	Pig,Zebrafish,Bovine,Horse,Sheep,Rabbit,Dog,Chicken,Xenopus
Purification:	The antibody is from purified rabbit serum by affinity purification via sequential chromatography on phospho- and non-phospho-peptide affinity columns.

Target Details

Target:	ErbB2/Her2
Alternative Name:	ERBB2 (ErbB2/Her2 Products)
Background:	<p>Description: Protein tyrosine kinase that is part of several cell surface receptor complexes, but that apparently needs a coreceptor for ligand binding. Essential component of a neuregulin-receptor complex, although neuregulins do not interact with it alone. GP30 is a potential ligand for this receptor. Regulates outgrowth and stabilization of peripheral microtubules (MTs). Upon ERBB2 activation, the MEMO1-RHOA-DIAPH1 signaling pathway elicits the phosphorylation and thus the inhibition of GSK3B at cell membrane. This prevents the phosphorylation of APC and CLASP2, allowing its association with the cell membrane. In turn, membrane-bound APC allows the localization of MACF1 to the cell membrane, which is required for microtubule capture and stabilization.</p> <p>Gene: ERBB2</p>
Molecular Weight:	185kDa
Gene ID:	2064
UniProt:	P04626
Pathways:	RTK Signaling , Fc-epsilon Receptor Signaling Pathway , EGFR Signaling Pathway , Neurotrophin Signaling Pathway , Skeletal Muscle Fiber Development

Application Details

Application Notes:	WB 1:500-1:2000, IHC 1:50-1:500, IF/ICC 1:100-1:500, ELISA(peptide) 1:20000-1:40000
Restrictions:	For Research Use only

Handling

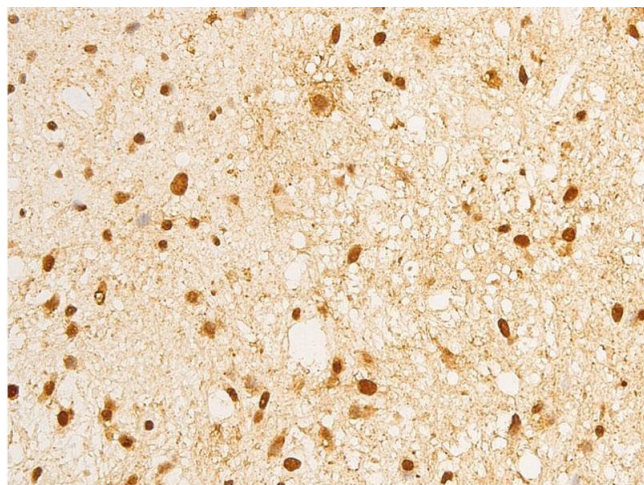
Format:	Liquid
Concentration:	1 mg/mL
Buffer:	Rabbit IgG in phosphate buffered saline , pH 7.4, 150 mM NaCl, 0.02 % sodium azide and 50 % glycerol.
Preservative:	Sodium azide
Precaution of Use:	This product contains Sodium azide: a POISONOUS AND HAZARDOUS SUBSTANCE which should be handled by trained staff only.
Storage:	-20 °C

Handling

Storage Comment: Store at -20 °C. Stable for 12 months from date of receipt.

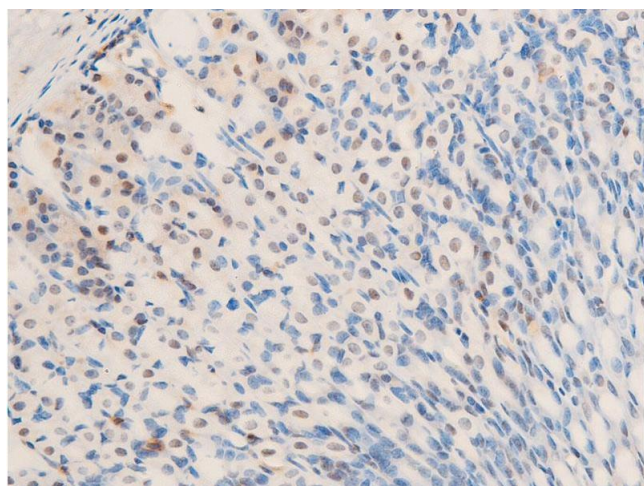
Expiry Date: 12 months

Images



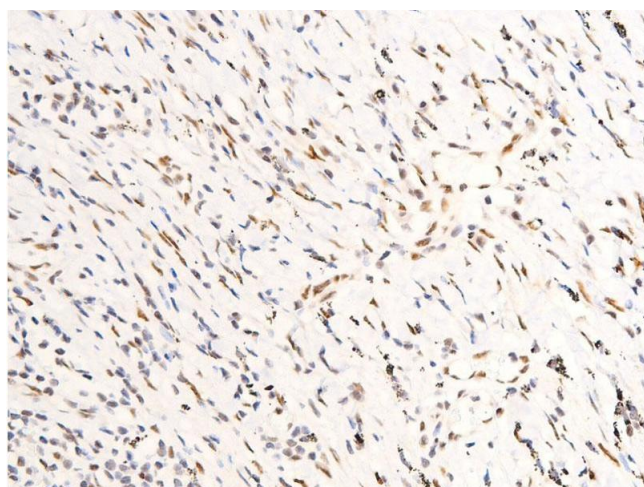
Immunohistochemistry

Image 1. ABIN6267283 at 1/100 staining human brain tissue sections by IHC-P. The tissue was formaldehyde fixed and a heat mediated antigen retrieval step in citrate buffer was performed. The tissue was then blocked and incubated with the antibody for 1.5 hours at 22°C. An HRP conjugated goat anti-rabbit antibody was used as the secondary.



Immunohistochemistry

Image 2. ABIN6267283 at 1/100 staining mouse gastric tissue sections by IHC-P. The tissue was formaldehyde fixed and a heat mediated antigen retrieval step in citrate buffer was performed. The tissue was then blocked and incubated with the antibody for 1.5 hours at 22°C. An HRP conjugated goat anti-rabbit antibody was used as the secondary.



Immunohistochemistry

Image 3. ABIN6267283 at 1/100 staining human TB tissue sections by IHC-P. The tissue was formaldehyde fixed and a heat mediated antigen retrieval step in citrate buffer was performed. The tissue was then blocked and incubated with the antibody for 1.5 hours at 22°C. An HRP conjugated goat anti-rabbit antibody was used as the secondary.

Please check the [product details page](#) for more images. Overall 12 images are available for ABIN6256630.