



Datasheet for ABIN6256655  
**anti-BCR antibody (pTyr177)**



[Go to Product page](#)

3 Images

Overview

Quantity:	100 µL
Target:	BCR
Binding Specificity:	pTyr177
Reactivity:	Human, Mouse
Host:	Rabbit
Clonality:	Polyclonal
Conjugate:	This BCR antibody is un-conjugated
Application:	Western Blotting (WB), ELISA, Immunofluorescence (IF), Immunocytochemistry (ICC)

Product Details

Immunogen:	A synthesized peptide derived from human Bcr around the phosphorylation site of Tyr177.
Isotype:	IgG
Specificity:	Phospho-Bcr (Tyr177) Antibody detects endogenous levels of Bcr only when phosphorylated at Tyrosine 177.
Predicted Reactivity:	Zebrafish,Chicken
Purification:	The antibody is from purified rabbit serum by affinity purification via sequential chromatography on phospho- and non-phospho-peptide affinity columns.

Target Details

Target:	BCR
---------	-----

## Target Details

---

Alternative Name:	BCR ( <a href="#">BCR Products</a> )
Background:	Description: GTPase-activating protein for RAC1 and CDC42. Promotes the exchange of RAC or CDC42-bound GDP by GTP, thereby activating them. Displays serine/threonine kinase activity. Gene: BCR
Molecular Weight:	160kDa
Gene ID:	613
UniProt:	<a href="#">P11274</a>
Pathways:	<a href="#">Regulation of Leukocyte Mediated Immunity</a> , <a href="#">Platelet-derived growth Factor Receptor Signaling</a>

## Application Details

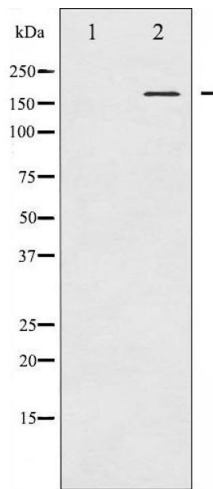
---

Application Notes:	WB 1:500-1:2000, IF/ICC 1:100-1:500, ELISA(peptide) 1:20000-1:40000
Restrictions:	For Research Use only

## Handling

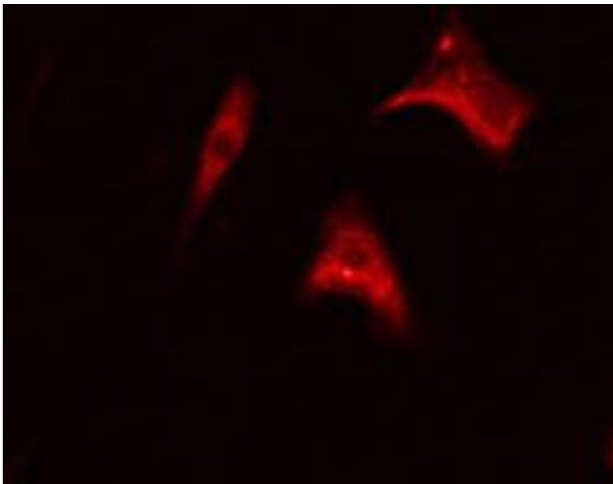
---

Format:	Liquid
Concentration:	1 mg/mL
Buffer:	Rabbit IgG in phosphate buffered saline , pH 7.4, 150 mM NaCl, 0.02 % sodium azide and 50 % glycerol.
Preservative:	Sodium azide
Precaution of Use:	This product contains Sodium azide: a POISONOUS AND HAZARDOUS SUBSTANCE which should be handled by trained staff only.
Storage:	-20 °C
Storage Comment:	Store at -20 °C. Stable for 12 months from date of receipt.
Expiry Date:	12 months



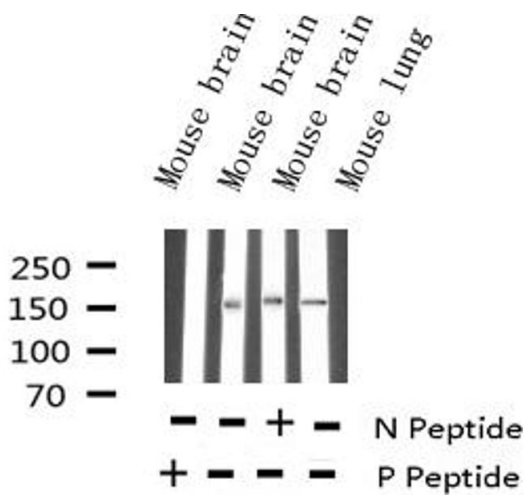
### Western Blotting

**Image 1.** Western blot analysis of Bcr phosphorylation expression in K562 whole cell lysates, The lane on the left is treated with the antigen-specific peptide.



### Immunofluorescence (fixed cells)

**Image 2.** ABIN6267366 staining HeLa cells by IF/ICC. The sample were fixed with PFA and permeabilized in 0.1% Triton X-100, then blocked in 10% serum for 45 minutes at 25°C. The primary antibody was diluted at 1/200 and incubated with the sample for 1 hour at 37°C. An Alexa Fluor 594 conjugated goat anti-rabbit IgG (H+L) antibody (Cat.# S0006), diluted at 1/600, was used as secondary antibody.



### Western Blotting

**Image 3.** Western blot analysis of Phospho-Bcr (Tyr177) expression in various lysates