

Datasheet for ABIN6256668

## anti-PI3K p85 alpha/gamma antibody (pTyr199, pTyr467)



[Go to Product page](#)

3 Images

1 Publication

### Overview

|                      |  |
|----------------------|--|
| Quantity:            | 100 µL   |
| Target:              | PI3K p85 alpha/gamma (PI3K p85a/g)   |
| Binding Specificity: | pTyr199, pTyr467   |
| Reactivity:          | Human, Mouse, Rat, Monkey  |
| Host:                | Rabbit   |
| Clonality:           | Polyclonal   |
| Conjugate:           | This PI3K p85 alpha/gamma antibody is un-conjugated                              |
| Application:         | Western Blotting (WB), ELISA, Immunofluorescence (IF), Immunocytochemistry (ICC) |

### Product Details

|                   |   |
|-------------------|---|
| Immunogen:        | A synthesized peptide derived from human PI3-kinase p85- alpha/ gamma around the phosphorylation site of Tyrosine 467/199   |
| Isotype:          | IgG   |
| Specificity:      | Phospho-PI3-kinase p85- alpha/ gamma (Tyr467/199) Antibody detects endogenous levels of PI3-kinase p85- alpha/ gamma only when phosphorylated at Tyrosine 467/199 |
| Cross-Reactivity: | Human, Monkey, Mouse (Murine), Rat (Rattus)   |
| Purification:     | The antibody is from purified rabbit serum by affinity purification via sequential chromatography on phospho- and non-phospho-peptide affinity columns.           |

### Target Details

|         |                                    |
|---------|------------------------------------|
| Target: | PI3K p85 alpha/gamma (PI3K p85a/g) |
|---------|------------------------------------|

## Target Details

|                   |  |
|-------------------|--|
| Alternative Name: | PI3-kinase p85 alpha/ gamma ( <a href="#">PI3K p85a/g Products</a> )   |
| Background:       | <p>Description: Binds to activated (phosphorylated) protein-Tyr kinases, through its SH2 domain, and acts as an adapter, mediating the association of the p110 catalytic unit to the plasma membrane. Necessary for the insulin-stimulated increase in glucose uptake and glycogen synthesis in insulin-sensitive tissues. Plays an important role in signaling in response to FGFR1, FGFR2, FGFR3, FGFR4, KITLG/SCF, KIT, PDGFRA and PDGFRB. Likewise, plays a role in ITGB2 signaling (PubMed:17626883, PubMed:19805105, PubMed:7518429). Modulates the cellular response to ER stress by promoting nuclear translocation of XBP1 isoform 2 in a ER stress- and/or insulin-dependent manner during metabolic overloading in the liver and hence plays a role in glucose tolerance improvement (PubMed:20348923).</p> <p>Gene: PIK3R1</p> |
| Molecular Weight: | 54,83kDa   |
| Gene ID:          | 5295   |
| UniProt:          | <a href="#">P27986</a> , <a href="#">Q92569</a>  |

## Application Details

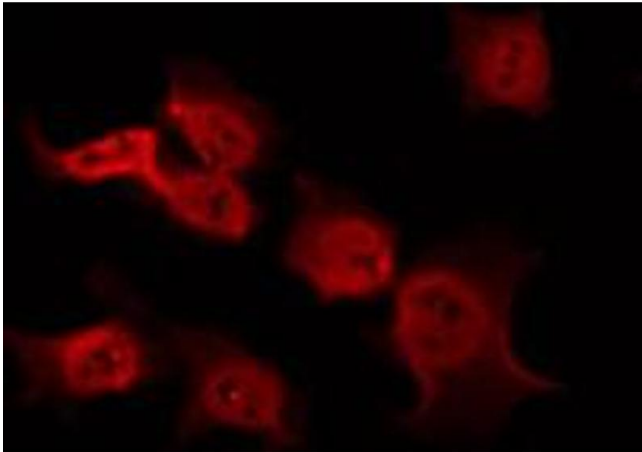
|                    |                                    |
|--------------------|------------------------------------|
| Application Notes: | WB 1:500-1:2000 IF/ICC 1:100-1:500 |
| Restrictions:      | For Research Use only              |

## Handling

|                    |  |
|--------------------|--|
| Format:            | Liquid   |
| Concentration:     | 1 mg/mL  |
| Buffer:            | Rabbit IgG in phosphate buffered saline , pH 7.4, 150 mM NaCl, 0.02 % sodium azide and 50 % glycerol.                  |
| Preservative:      | Sodium azide   |
| Precaution of Use: | This product contains Sodium azide: a POISONOUS AND HAZARDOUS SUBSTANCE which should be handled by trained staff only. |
| Storage:           | -20 °C   |
| Storage Comment:   | Store at -20 °C.Stable for 12 months from date of receipt  |
| Expiry Date:       | 12 months  |

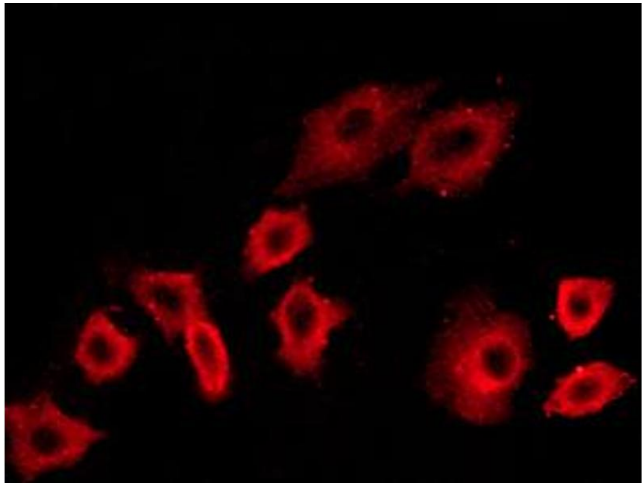
Product cited in: Wang, Li, Li, Pan, Bai, Huang: "Angelicin inhibits liver cancer growth in vitro and in vivo." in: **Molecular medicine reports**, Vol. 16, Issue 4, pp. 5441-5449, (2018) ([PubMed](#)).

Images



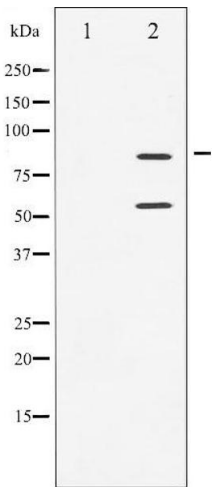
Immunofluorescence (fixed cells)

**Image 1.** ABIN6267453 staining COS7 by IF/ICC. The sample were fixed with PFA and permeabilized in 0.1% Triton X-100,then blocked in 10% serum for 45 minutes at 25°C. The primary antibody was diluted at 1/200 and incubated with the sample for 1 hour at 37°C. An Alexa Fluor 594 conjugated goat anti-rabbit IgG (H+L) Ab, diluted at 1/600, was used as the secondary antibody.



Immunofluorescence (fixed cells)

**Image 2.** ABIN6267453 staining NIH/3T3 cells by ICC/IF. Cells were fixed with PFA and permeabilized in 0.1% saponin prior to blocking in 10% serum for 45 minutes at 37°C. The primary antibody was diluted 1/400 and incubated with the sample for 1 hour at 37°C. A Alexa Fluor 594 conjugated goat polyclonal to rabbit IgG (H+L), diluted 1/600 was used as secondary antibody.



Western Blotting

**Image 3.** Western blot analysis of PI3-kinase p85- alpha/ gamma phosphorylation expression in H2O2 treated COS7 whole cell lysates,The lane on the left is treated with the antigen-specific peptide.