

Datasheet for ABIN6256680
anti-DAB1 antibody (pTyr232)

3 Images

1 Publication

[Go to Product page](#)

Overview

Quantity:	100 µL
Target:	DAB1
Binding Specificity:	pTyr232
Reactivity:	Human, Mouse, Rat
Host:	Rabbit
Clonality:	Polyclonal
Conjugate:	This DAB1 antibody is un-conjugated
Application:	Western Blotting (WB), ELISA, Immunofluorescence (IF), Immunocytochemistry (ICC)

Product Details

Immunogen:	A synthesized peptide derived from human Dab1 around the phosphorylation site of Tyr232.
Isotype:	IgG
Specificity:	Phospho-Dab1 (Tyr232) Antibody detects endogenous levels of Dab1 only when phosphorylated at Tyrosine 232.
Predicted Reactivity:	Pig,Bovine,Horse,Sheep,Rabbit,Dog,Chicken,Xenopus
Purification:	The antibody is from purified rabbit serum by affinity purification via sequential chromatography on phospho- and non-phospho-peptide affinity columns.

Target Details

Target:	DAB1
---------	------

Target Details

Alternative Name:	DAB1 (DAB1 Products)
Background:	Description: Adapter molecule functioning in neural development. May regulate SIAH1 activity. Gene: DAB1
Molecular Weight:	60kDa
Gene ID:	1600
UniProt:	075553

Application Details

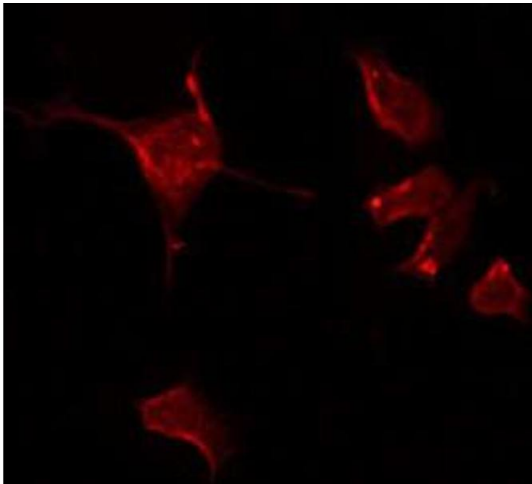
Application Notes:	WB 1:500-1:2000, IF/ICC 1:100-1:500, ELISA(peptide) 1:20000-1:40000
Restrictions:	For Research Use only

Handling

Format:	Liquid
Concentration:	1 mg/mL
Buffer:	Rabbit IgG in phosphate buffered saline , pH 7.4, 150 mM NaCl, 0.02 % sodium azide and 50 % glycerol.
Preservative:	Sodium azide
Precaution of Use:	This product contains Sodium azide: a POISONOUS AND HAZARDOUS SUBSTANCE which should be handled by trained staff only.
Storage:	-20 °C
Storage Comment:	Store at -20 °C. Stable for 12 months from date of receipt.
Expiry Date:	12 months

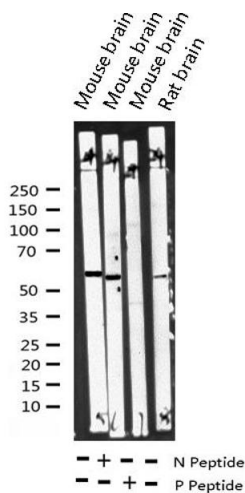
Publications

Product cited in:	Liu, Li, Shu, Xiao, Feng: "Ephrin-b3 modulates hippocampal neurogenesis and the reelin signaling pathway in a pilocarpine-induced model of epilepsy." in: International journal of molecular medicine , Vol. 41, Issue 6, pp. 3457-3467, (2018) (PubMed).
-------------------	--



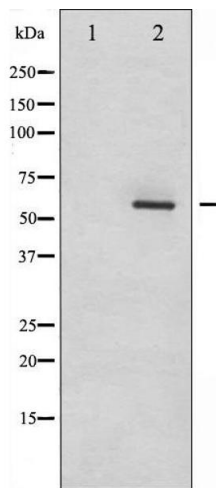
Immunofluorescence (fixed cells)

Image 1. ABIN6267246 staining HeLa by IF/ICC. The sample were fixed with PFA and permeabilized in 0.1% Triton X-100,then blocked in 10% serum for 45 minutes at 25°C. The primary antibody was diluted at 1/200 and incubated with the sample for 1 hour at 37°C. An Alexa Fluor 594 conjugated goat anti-rabbit IgG (H+L) Ab, diluted at 1/600, was used as the secondary antibody.



Western Blotting

Image 2. Western blot analysis of Phospho-Dab1 (Tyr232) expression in various lysates



Western Blotting

Image 3. Western blot analysis of Dab1 phosphorylation expression in LOVO whole cell lysates, The lane on the left is treated with the antigen-specific peptide.