



[Go to Product page](#)

Datasheet for ABIN6256750  
**anti-IL-10RA antibody (pTyr496)**

2 Images

Overview

Quantity:	100 µL
Target:	IL-10RA (IL10RA)
Binding Specificity:	pTyr496
Reactivity:	Human
Host:	Rabbit
Clonality:	Polyclonal
Conjugate:	This IL-10RA antibody is un-conjugated
Application:	Western Blotting (WB), ELISA, Immunofluorescence (IF), Immunocytochemistry (ICC)

Product Details

Immunogen:	A synthesized peptide derived from human IL-10R alpha around the phosphorylation site of Tyr496.
Isotype:	IgG
Specificity:	Phospho-IL-10R alpha (Tyr496) Antibody detects endogenous levels of IL-10R alpha only when phosphorylated at Tyrosine 496.
Predicted Reactivity:	Pig,Horse,Rabbit,Dog,Chicken
Purification:	The antibody is from purified rabbit serum by affinity purification via sequential chromatography on phospho- and non-phospho-peptide affinity columns.

Target Details

Target:	IL-10RA (IL10RA)
---------	------------------

## Target Details

---

Alternative Name:	IL10RA ( <a href="#">IL10RA Products</a> )
Background:	Description: Receptor for IL10, binds IL10 with a high affinity. Gene: IL10RA
Molecular Weight:	63kDa
Gene ID:	3587
UniProt:	<a href="#">Q13651</a>
Pathways:	<a href="#">Growth Factor Binding</a>

## Application Details

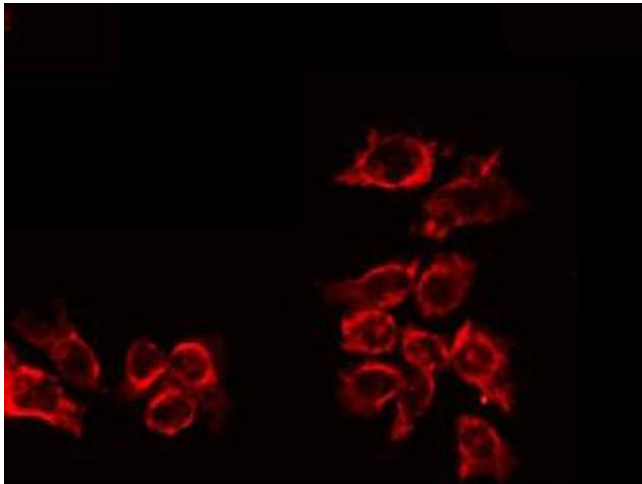
---

Application Notes:	WB 1:500-1:2000, IF/ICC 1:100-1:500, ELISA(peptide) 1:20000-1:40000
Restrictions:	For Research Use only

## Handling

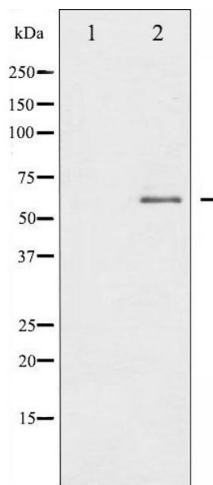
---

Format:	Liquid
Concentration:	1 mg/mL
Buffer:	Rabbit IgG in phosphate buffered saline , pH 7.4, 150 mM NaCl, 0.02 % sodium azide and 50 % glycerol.
Preservative:	Sodium azide
Precaution of Use:	This product contains Sodium azide: a POISONOUS AND HAZARDOUS SUBSTANCE which should be handled by trained staff only.
Storage:	-20 °C
Storage Comment:	Store at -20 °C. Stable for 12 months from date of receipt.
Expiry Date:	12 months



### Immunofluorescence (fixed cells)

**Image 1.** ABIN6267644 staining HuvEc by IF/ICC. The sample were fixed with PFA and permeabilized in 0.1% Triton X-100, then blocked in 10% serum for 45 minutes at 25°C. The primary antibody was diluted at 1/200 and incubated with the sample for 1 hour at 37°C. An Alexa Fluor 594 conjugated goat anti-rabbit IgG (H+L) Ab, diluted at 1/600, was used as the secondary antibody.



### Western Blotting

**Image 2.** Western blot analysis of IL-10R alpha phosphorylation expression in HuvEc whole cell lysates, The lane on the left is treated with the antigen-specific peptide.