

Datasheet for ABIN6256761
anti-PTPN11 antibody (pTyr542)[Go to Product page](#)

4 Images

Overview

Quantity:	100 µL
Target:	PTPN11
Binding Specificity:	pTyr542
Reactivity:	Human, Mouse, Rat
Host:	Rabbit
Clonality:	Polyclonal
Conjugate:	This PTPN11 antibody is un-conjugated
Application:	Western Blotting (WB), Immunohistochemistry (IHC), ELISA, Immunofluorescence (IF), Immunocytochemistry (ICC)

Product Details

Immunogen:	A synthesized peptide derived from human SHP2 around the phosphorylation site of Tyr542
Isotype:	IgG
Specificity:	Phospho-SHP2 (Tyr542) Antibody detects endogenous levels of SHP2 only when phosphorylated at Tyr546, which site historically referenced as Tyr542.
Predicted Reactivity:	Pig,Bovine,Horse,Sheep,Rabbit,Dog,Chicken
Purification:	The antibody is from purified rabbit serum by affinity purification via sequential chromatography on phospho- and non-phospho-peptide affinity columns.

Target Details

Target:	PTPN11
---------	--------

Target Details

Alternative Name:	PTPN11 (PTPN11 Products)
Target Type:	Viral Protein
Background:	<p>Description: Acts downstream of various receptor and cytoplasmic protein tyrosine kinases to participate in the signal transduction from the cell surface to the nucleus. Positively regulates MAPK signal transduction pathway (PubMed:28074573). Dephosphorylates GAB1, ARHGAP35 and EGFR (PubMed:28074573). Dephosphorylates ROCK2 at 'Tyr-722' resulting in stimulation of its RhoA binding activity. Dephosphorylates CDC73 (PubMed:26742426).</p> <p>Gene: PTPN11</p>
Molecular Weight:	70kDa
Gene ID:	5781
UniProt:	Q06124
Pathways:	JAK-STAT Signaling , RTK Signaling , TCR Signaling , Interferon-gamma Pathway , Fc-epsilon Receptor Signaling Pathway , EGFR Signaling Pathway , Neurotrophin Signaling Pathway , Negative Regulation of Hormone Secretion , Carbohydrate Homeostasis , Toll-Like Receptors Cascades , CXCR4-mediated Signaling Events , Signaling Events mediated by VEGFR1 and VEGFR2 , Signaling of Hepatocyte Growth Factor Receptor , VEGFR1 Specific Signals , BCR Signaling , Warburg Effect

Application Details

Application Notes:	WB 1:500-1:2000, IHC 1:50-1:200, IF/ICC 1:100-1:500, ELISA(peptide) 1:20000-1:40000
Restrictions:	For Research Use only

Handling

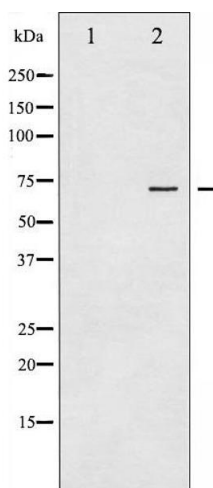
Format:	Liquid
Concentration:	1 mg/mL
Buffer:	Rabbit IgG in phosphate buffered saline , pH 7.4, 150 mM NaCl, 0.02 % sodium azide and 50 % glycerol.
Preservative:	Sodium azide
Precaution of Use:	This product contains Sodium azide: a POISONOUS AND HAZARDOUS SUBSTANCE which should be handled by trained staff only.
Storage:	-20 °C

Handling

Storage Comment: Store at -20 °C. Stable for 12 months from date of receipt.

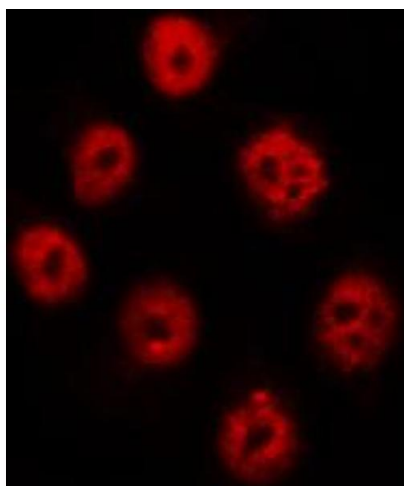
Expiry Date: 12 months

Images



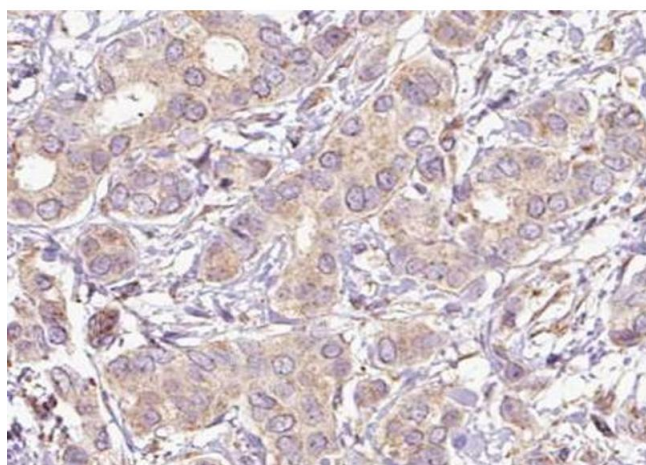
Western Blotting

Image 1. Western blot analysis of SHP-2 phosphorylation expression in A431 whole cell lysates, The lane on the left is treated with the antigen-specific peptide.



Immunofluorescence (fixed cells)

Image 2. ABIN6267621 staining A431 by IF/ICC. The sample were fixed with PFA and permeabilized in 0.1% Triton X-100, then blocked in 10% serum for 45 minutes at 25°C. The primary antibody was diluted at 1/200 and incubated with the sample for 1 hour at 37°C. An Alexa Fluor 594 conjugated goat anti-rabbit IgG (H+L) Ab, diluted at 1/600, was used as the secondary antibody.



Immunohistochemistry

Image 3. ABIN6267621 at 1/100 staining human Breast carcinoma tissue sections by IHC-P. The tissue was formaldehyde fixed and a heat mediated antigen retrieval step in citrate buffer was performed. The tissue was then blocked and incubated with the antibody for 1.5 hours at 22°C. An HRP conjugated goat anti-rabbit antibody was used as the secondary.

Please check the [product details page](#) for more images. Overall 4 images are available for ABIN6256761.