

Datasheet for ABIN6256811  
**anti-EPS15 antibody (pTyr849)**

## 2 Images

[Go to Product page](#)

## Overview

Quantity:	100 µL
Target:	EPS15
Binding Specificity:	pTyr849
Reactivity:	Human, Mouse, Rat
Host:	Rabbit
Clonality:	Polyclonal
Conjugate:	This EPS15 antibody is un-conjugated
Application:	Western Blotting (WB), ELISA, Immunohistochemistry (IHC), Immunofluorescence (IF), Immunocytochemistry (ICC)

## Product Details

Immunogen:	A synthesized peptide derived from human EPS15 around the phosphorylation site of Tyr849.
Isotype:	IgG
Specificity:	Phospho-EPS15 (Tyr849) Antibody detects endogenous levels of EPS15 only when phosphorylated at Tyrosine 849.
Purification:	The antibody is from purified rabbit serum by affinity purification via sequential chromatography on phospho- and non-phospho-peptide affinity columns.

## Target Details

Target:	EPS15
Alternative Name:	EPS15 ( <a href="#">EPS15 Products</a> )

## Target Details

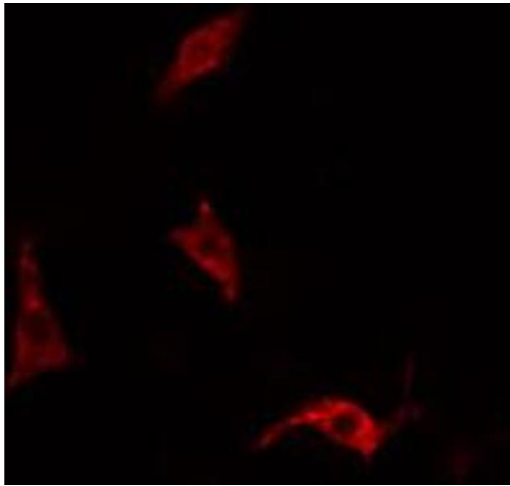
Background:	<p>Description: Involved in cell growth regulation. May be involved in the regulation of mitogenic signals and control of cell proliferation. Involved in the internalization of ligand-inducible receptors of the receptor tyrosine kinase (RTK) type, in particular EGFR. Plays a role in the assembly of clathrin-coated pits (CCPs). Acts as a clathrin adapter required for post-Golgi trafficking. Seems to be involved in CCPs maturation including invagination or budding.</p> <p>Involved in endocytosis of integrin beta-1 (ITGB1) and transferrin receptor (TFR), internalization of ITGB1 as DAB2-dependent cargo but not TFR seems to require association with DAB2.</p> <p>Gene: EPS15</p>
Molecular Weight:	98kDa
Gene ID:	2060
UniProt:	<a href="#">P42566</a>
Pathways:	<a href="#">EGFR Signaling Pathway</a> , <a href="#">Regulation of Muscle Cell Differentiation</a> , <a href="#">Skeletal Muscle Fiber Development</a> , <a href="#">EGFR Downregulation</a>

## Application Details

Application Notes:	WB 1:500-1:2000, IF/ICC 1:100-1:500, IHC 1:50-1:200, ELISA(peptide) 1:20000-1:40000
Restrictions:	For Research Use only

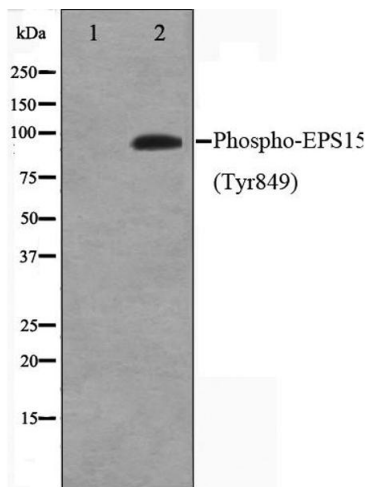
## Handling

Format:	Liquid
Concentration:	1 mg/mL
Buffer:	Rabbit IgG in phosphate buffered saline , pH 7.4, 150 mM NaCl, 0.02 % sodium azide and 50 % glycerol.
Preservative:	Sodium azide
Precaution of Use:	This product contains Sodium azide: a POISONOUS AND HAZARDOUS SUBSTANCE which should be handled by trained staff only.
Storage:	-20 °C
Storage Comment:	Store at -20 °C. Stable for 12 months from date of receipt.
Expiry Date:	12 months



#### Immunofluorescence (fixed cells)

**Image 1.** ABIN6266468 staining HepG2 cells by IF/ICC. The sample were fixed with PFA and permeabilized in 0.1% Triton X-100, then blocked in 10% serum for 45 minutes at 25°C. The primary antibody was diluted at 1/200 and incubated with the sample for 1 hour at 37°C. An Alexa Fluor 594 conjugated goat anti-rabbit IgG (H+L) antibody (Cat.# S0006), diluted at 1/600, was used as secondary antibody.



#### Western Blotting

**Image 2.** Western blot analysis on HepG2 cell lysate using Phospho-EPS15(Tyr849) Antibody, The lane on the left is treated with the antigen-specific peptide.