

Datasheet for ABIN6256821

**anti-Choline Acetyltransferase antibody (C-Term)**[Go to Product page](#)**2** Images

## Overview

|                      |  |
|----------------------|--|
| Quantity:            | 100 µL   |
| Target:              | Choline Acetyltransferase (CHAT)                         |
| Binding Specificity: | C-Term   |
| Reactivity:          | Human, Mouse, Rat  |
| Host:                | Rabbit   |
| Clonality:           | Polyclonal   |
| Conjugate:           | This Choline Acetyltransferase antibody is un-conjugated |
| Application:         | Western Blotting (WB), Immunohistochemistry (IHC), ELISA |

## Product Details

|               |  |
|---------------|--|
| Immunogen:    | A synthesized peptide derived from human Choline Acetyltransferase, corresponding to a region within C-terminal amino acids. |
| Isotype:      | IgG  |
| Specificity:  | Choline Acetyltransferase Antibody detects endogenous levels of total Choline Acetyltransferase.                             |
| Purification: | The antiserum was purified by peptide affinity chromatography using SulfoLink™ Coupling Resin (Thermo Fisher Scientific).    |

## Target Details

|                   |  |
|-------------------|--|
| Target:           | Choline Acetyltransferase (CHAT)       |
| Alternative Name: | CHAT ( <a href="#">CHAT Products</a> ) |

## Target Details

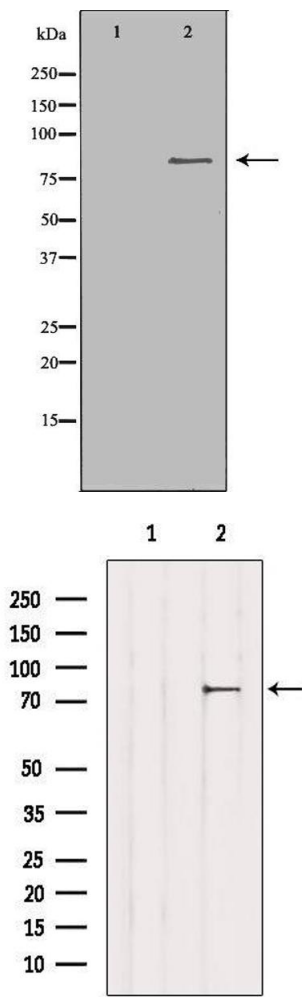
|                   |   |
|-------------------|---|
| Background:       | Description: Catalyzes the reversible synthesis of acetylcholine (ACh) from acetyl CoA and choline at cholinergic synapses.<br>Gene: CHAT |
| Molecular Weight: | 82kDa   |
| Gene ID:          | 1103  |
| UniProt:          | <a href="#">P28329</a>  |
| Pathways:         | <a href="#">Skeletal Muscle Fiber Development</a>   |

## Application Details

|                    |   |
|--------------------|---|
| Application Notes: | WB 1:500-1:2000, IHC 1:50-1:200, ELISA(peptide) 1:20000-1:40000 |
| Restrictions:      | For Research Use only   |

## Handling

|                    |  |
|--------------------|--|
| Format:            | Liquid   |
| Concentration:     | 1 mg/mL  |
| Buffer:            | Rabbit IgG in phosphate buffered saline , pH 7.4, 150 mM NaCl, 0.02 % sodium azide and 50 % glycerol.                  |
| Preservative:      | Sodium azide   |
| Precaution of Use: | This product contains Sodium azide: a POISONOUS AND HAZARDOUS SUBSTANCE which should be handled by trained staff only. |
| Storage:           | -20 °C   |
| Storage Comment:   | Store at -20 °C. Stable for 12 months from date of receipt.  |
| Expiry Date:       | 12 months  |



### Western Blotting

**Image 1.** Western blot analysis of extracts of colo , using CHAT antibody. The lane on the left is treated with the antigen-specific peptide.

### Western Blotting

**Image 2.** Western blot analysis of extracts from 3T3, using CHAT Antibody. The lane on the left was treated with blocking peptide.