



[Go to Product page](#)

Datasheet for ABIN6256833  
**anti-JAML antibody (C-Term)**

2 Images

### Overview

Quantity:	100 µL
Target:	JAML (AMICA1)
Binding Specificity:	C-Term
Reactivity:	Human
Host:	Rabbit
Clonality:	Polyclonal
Conjugate:	This JAML antibody is un-conjugated
Application:	Western Blotting (WB), ELISA, Immunohistochemistry (IHC), Immunofluorescence (IF), Immunocytochemistry (ICC)

### Product Details

Immunogen:	A synthesized peptide derived from human JAML1, corresponding to a region within C-terminal amino acids.
Isotype:	IgG
Specificity:	JAML1 Antibody detects endogenous levels of total JAML1.
Purification:	The antiserum was purified by peptide affinity chromatography using SulfoLink™ Coupling Resin (Thermo Fisher Scientific).

### Target Details

Target:	JAML (AMICA1)
Alternative Name:	JAML ( <a href="#">AMICA1 Products</a> )

## Target Details

---

Background:	<p>Description: Transmembrane protein of the plasma membrane of leukocytes that control their migration and activation through interaction with CXADR, a plasma membrane receptor found on adjacent epithelial and endothelial cells. The interaction between both receptors mediates the activation of gamma-delta T-cells, a subpopulation of T-cells residing in epithelia and involved in tissue homeostasis and repair. Upon epithelial CXADR-binding, JAML induces downstream cell signaling events in gamma-delta T-cells through PI3-kinase and MAP kinases. It results in proliferation and production of cytokines and growth factors by T-cells that in turn stimulate epithelial tissues repair. It also controls the transmigration of leukocytes within epithelial and endothelial tissues through adhesive interactions with epithelial and endothelial CXADR.</p> <p>Gene: JAML</p>
-------------	---

---

Gene ID:	120425
----------	--------

---

UniProt:	<a href="#">Q86YT9</a>
----------	------------------------

## Application Details

---

Application Notes:	WB 1:500-1:2000, IHC 1:50-1:200, IF/ICC 1:100-1:500, ELISA(peptide) 1:20000-1:40000
--------------------	---

---

Restrictions:	For Research Use only
---------------	-----------------------

## Handling

---

Format:	Liquid
---------	--------

---

Concentration:	1 mg/mL
----------------	---------

---

Buffer:	Rabbit IgG in phosphate buffered saline, pH 7.4, 150 mM NaCl, 0.02 % sodium azide and 50 % glycerol.
---------	--

---

Preservative:	Sodium azide
---------------	--------------

---

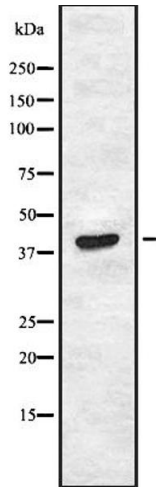
Precaution of Use:	This product contains Sodium azide: a POISONOUS AND HAZARDOUS SUBSTANCE which should be handled by trained staff only.
--------------------	--

---

Storage:	-20 °C
----------	--------

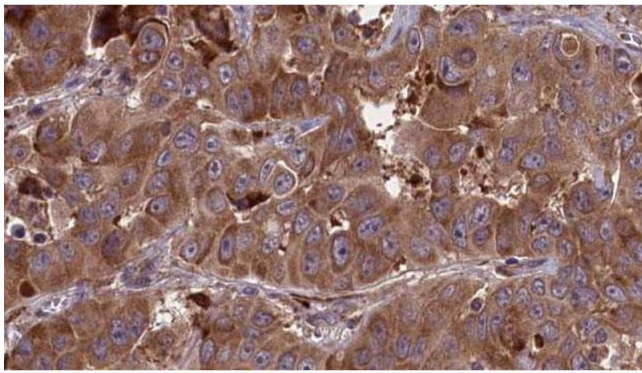
---

Expiry Date:	12 months
--------------	-----------



### Western Blotting

**Image 1.** Western blot analysis of JAML1 expression in HEK293 cells. The lane on the left is treated with the antigen-specific peptide.



### Immunohistochemistry

**Image 2.** ABIN6273681 at 1/100 staining Human liver cancer tissue by IHC-P. The sample was formaldehyde fixed and a heat mediated antigen retrieval step in citrate buffer was performed. The sample was then blocked and incubated with the antibody for 1.5 hours at 22°C. An HRP conjugated goat anti-rabbit antibody was used as the secondary.